

CONFIDENTIAL!
Intended for internal use only

supp. No.	material no.		A	E	F
	surface treatment processing acc. STAB-Spec.: 10006248		overall length	length without end-fitting stud	version
	Tab. IV	Tab. X	10028959 Tab. I China pay part		
1	536321	536321	105	95	1
2	076247	076247	129	119	1
3	076486	076486	156	146	1
4	076725	076725	180	170	1
5	077203	077203	207	197	1
6	077920	077920	228	218	1
7	078159	078159	264	254	1
8	078637	078637	279	269	1
9	078876	078876	312	302	1
10	383613	383613	132	122	1
11	934986	934986	165	155	1
12	914911	914911	171	161	1
13	783940	783940	210	200	1
14	786091	786091	231	221	1
15	787047	787047	150	140	1
16	787764	787764	111	101	1
17	792544	792544	192	182	1
18	865200	865200	177	167	1
19	531320	531320	357	347	1
20	438829	438829	102	92	1
21	439068	439068	300	290	1
22	449584	449584	501	491	1
23	196722	196722	126	116	1
24	199829	199829	144	134	1
25	201741	201741	246	236	1
26	202458	202458	294	284	1
27	202936	202936	225	215	1
28	203414	203414	186	176	1
29	204131	204131	204	194	1

Production Stabilus

(a) piston rod processing acc. to STAB-Spec. 10006248

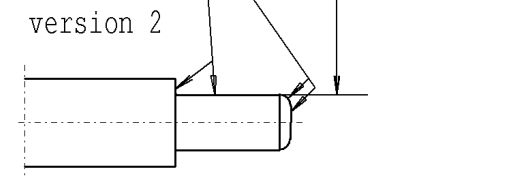
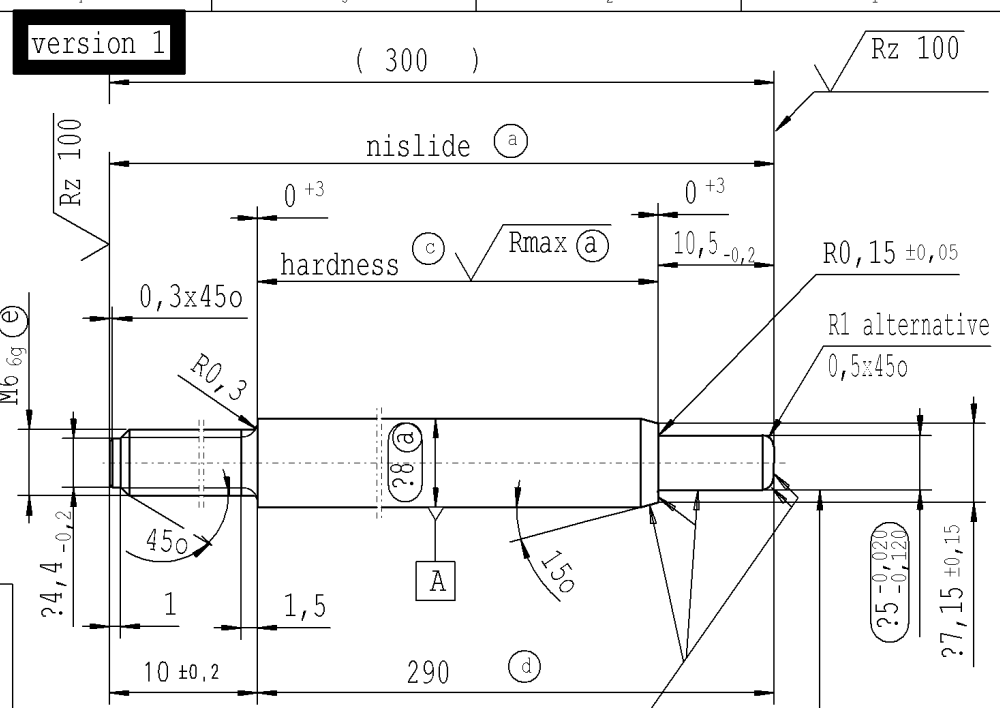
(c) RHT 0,4..0,7 mm before grinding, ≥ 68 HRA (acc. to DIN ISO 6508)

(d) tolerances: +0,3 after turning
+0,3 after straightening
+0,3 after nisliding

(e) threaded stud pre-turned dimension 25,29^{-0,06} thread roll tolerance 6e thread tolerances acc. to DIN ISO 965-3

for pay part China
product family: 2011/0517
approved lengths:
100-600 mm

Pay part China
acc. to separate
Supplier drawing



Environmental protection acc. to STAB-Spec. 10005649

√ Rz 25 (√ Rz 100 √ Rmax (a))

sheet 1
of 1

DE: X	EN: X	ES:	IT:	PR:	FR:	RO:	CAD created document handwritten changes not permitted
new	R1 alternative 0,5x450		Tab.X	pay part China product family: 2011/0517, approved l.:100-400 mm		approved lengths: 100-600 mm	
old	0,5x450		-	-		approved lengths: 100-400 mm	
Field	E/1		Tab.	B-C/3-6		B/5-6	
Date/Name	04.05.2009 Hein		07.02.2011 H?fer	21.07.2011 Hein		24.11.2015 Hein	
Chg. No.	572540		586804	589957		630576	
Rev.	1		2	3		4	

Material:	All dimensions are in mm	Identification of important characteristics	Drawn by	Date	Name
mat.no. 010731	Scale: (Original DIN A3) 2:1	Dimensions without tolerances DIN ISO 2768-mK	Checked	25.04.2008	Hein
Edge tolerances acc. to DIN ISO 13715	We reserve all rights to this document, to any patents or patent registrations related hereto, and to the duplication, retransmission by third parties and misc. use. Any use of this document is not permitted without the written consent of STABILUS.		Document No.:	10154967	
Surface finish DIN EN ISO 1302	STABILUS		Material No.:	PISTON ROD	
Replaces:					

Ident. Doc.:
Printdate: 2016/1/20 / 9:52:42 ***** print not scaled *****
Date: 13/12/2016 - 13:23