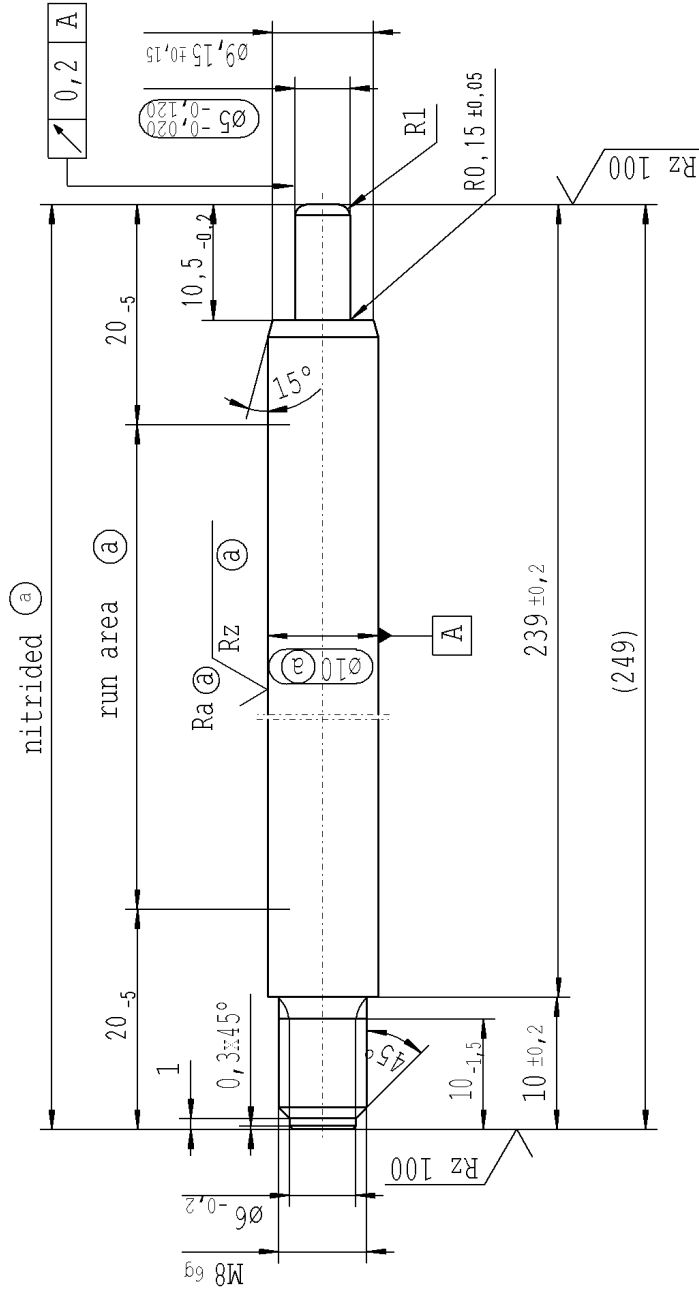


Ⓐ piston rod processing per STAB-Spec. 10028959, table 1



thread tolerances acc. to DIN ISO 965-3

$\sqrt{Rz\ 25}$ ($\sqrt{Rz\ 100}$ $\sqrt{Ra\ \text{Ⓐ}}$ $\sqrt{Rz\ \text{Ⓐ}}$) $\sqrt{+0,2}$ $\sqrt{-0,2}$

RELEASE
for supplier
company Zhang Shi
11.12.2015 Schilz A.
(date / signature)

The print-out is not subject to the modification service.

Intended for internal and supplier use

EN

Ident., Doc.: 131

DE: X	EN: X	ES: X	IT: X	PR: X	FR: X	RO: X
new	INITIAL RELEASE	-	-	-	-	-
old	-	-	-	-	-	-
Field	-	-	-	-	-	-
Date/Name	11.12.2015 Höfer	-	-	-	-	-
Chg. No.	631659	-	-	-	-	-
Rev.	0	-	-	-	-	-

Material:	1.1193
S45C JISG 4051	
Edge tolerances acc. to DIN ISO 13715	
Surface finish	DIN EN ISO 1302
Replaces:	

All dimensions are in mm	Identification of important characteristics
Scale: (Original DIN A3) 2:1	Dimensions without tolerances
We reserve all rights to this document, to any patents or patent registrations related hereto, and to the duplication, retransmission by third parties and misc. use. Any use of this document is not permitted without the written consent of STABILUS.	

Environmental protection acc. to STAB-Spec. 10005649	Name
Drawn by	11.12.2015 Höfer
Checked	11.12.2015 Müller
Document No.:	10166619
Material No.:	160872

STABILUS

PISTON ROD