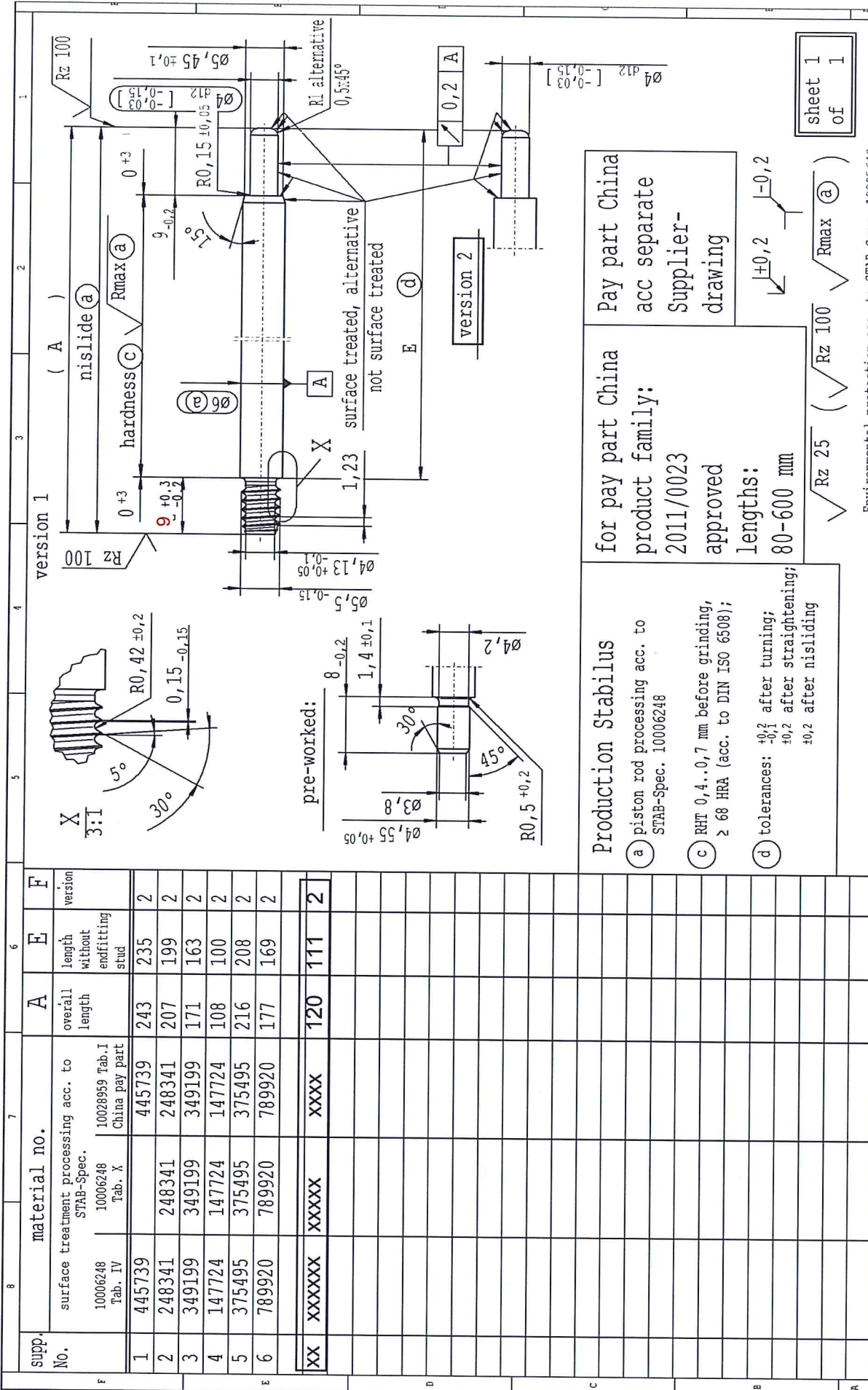


CONFIDENTIAL!  
Intended for internal use only

EN

Erstellungsdatum: 07/2016 - 24:8  
Erstellungsdatum: 07/2016 - 24:8



Production Stabilus  
 a piston rod processing acc. to STAB-Spec. 10006248  
 c RHT 0,4..0,7 mm before grinding, ≥ 68 HRA (acc. to DIN ISO 6508);  
 d tolerances:  $\begin{matrix} +0,2 \\ -0,1 \end{matrix}$  after turning;  
 $\begin{matrix} +0,2 \\ -0,2 \end{matrix}$  after straightening;  
 $\begin{matrix} +0,2 \\ -0,2 \end{matrix}$  after nisliding

for pay part China  
 product family:  
 2011/0023  
 approved  
 lengths:  
 80-600 mm  
 $\sqrt{Rz 25}$  ( $\sqrt{Rz 100}$   $\sqrt{Rmax a}$ )

Pay part China  
 acc separate  
 Supplier-  
 drawing  
 $\begin{matrix} +0,2 \\ -0,2 \end{matrix}$

DE: X	EN: X	ES: X	IT: PR	FR: FR	RO: RO	CD created document; handwritten changes not permitted	Material:	
new	INITIAL RELEASE	product family: 2011/0023; approved lengths: 80-300mm	product family: 2011/0023; approved lengths: 80-300mm	product family: 2011/0023; approved lengths: 80-300mm	product family: 2011/0023; approved lengths: 80-300mm	approved lengths: 80-600mm	Mat. no. 010707	
old	-	-	-	-	-	approved lengths: 80-300mm	Scale: (Original DIN A3) 2:1	
Field	-	-	B-6/2-3	B-6/2-3	B-6/2-3	Surface finish DIN EN ISO 1302	Dimensions without tolerances DIN ISO 2768 mk	
Date/Name	29.11.2010 Hölfer	31.05.2011 Hein	31.05.2011 Hein	31.05.2011 Hein	24.11.2015 Hein	Replaces: 630576	Identification of important characteristics	
Chg. No.	-	-	588927	588927	588927	630576	Document No.: 10177465	
Rev.	0	0	1	1	1	2	Material No.: 10177465	
STABILUS							PISTON ROD	

Environmental protection acc. to STAB-Spec. 10005649

Date	Drawn by	Checked	Document No.	Material No.
29.11.2010	Hölfer	29.11.2010 Hölfer	10177465	10177465
29.11.2015	Klötner	29.11.2015 Klötner	10177465	10177465