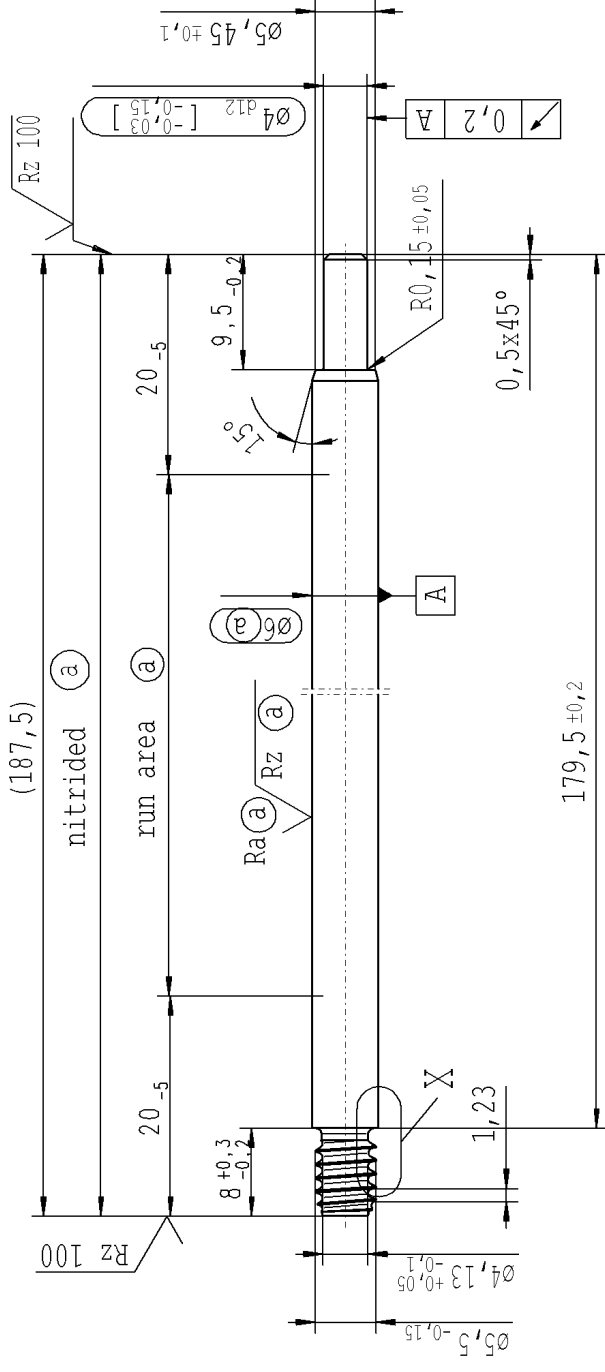
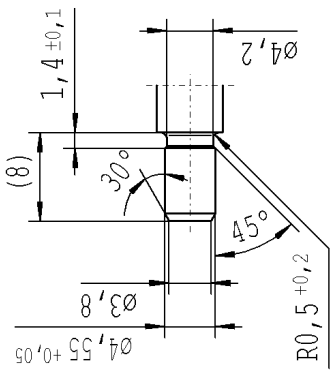


Ⓐ piston rod processing per STAB-Spec. 10028959, table 1



pre-worked:



√ Rz 25 ( √ Rz 100 Ra Ⓐ Rz Ⓐ ) | +0,2 | -0,2

Environmental protection acc. to STAB-Spec. 10005649		Identification of important characteristics		Name	
All dimensions are in mm		Dimensions without tolerances		Date	
Scale: (Original DIN A3) 2:1		Dimensions without tolerances		Drawn by 14.07.2016 Höfer	
We reserve all rights to this document, to any patents or patent registrations related hereto, and to the duplication, retransmission by third parties and misc. use. Any use of this document is not permitted without the written consent of STABILUS.		DIN ISO 2768-mK		Checked 15.07.2016 Müller	
Material: 1.1193 S45C JISG 4051		Edge tolerances acc. to DIN ISO 13715		Document No.: 10151336	
Surface finish: DIN EN ISO 1302		Replaces:		Material No.: 878589	
Replaces:		company Zhang Shi		PISTON ROD	
Date: 15.07.2016		Schilz A.			
(date / signature)					
STABILUS					
Material: 1.1193 S45C JISG 4051		Edge tolerances acc. to DIN ISO 13715			
Surface finish: DIN EN ISO 1302		Replaces:			
Replaces:		company Zhang Shi			
Date: 15.07.2016		Schilz A.			
(date / signature)					
STABILUS					
Material: 1.1193 S45C JISG 4051		Edge tolerances acc. to DIN ISO 13715			
Surface finish: DIN EN ISO 1302		Replaces:			
Replaces:		company Zhang Shi			
Date: 15.07.2016		Schilz A.			
(date / signature)					
STABILUS					