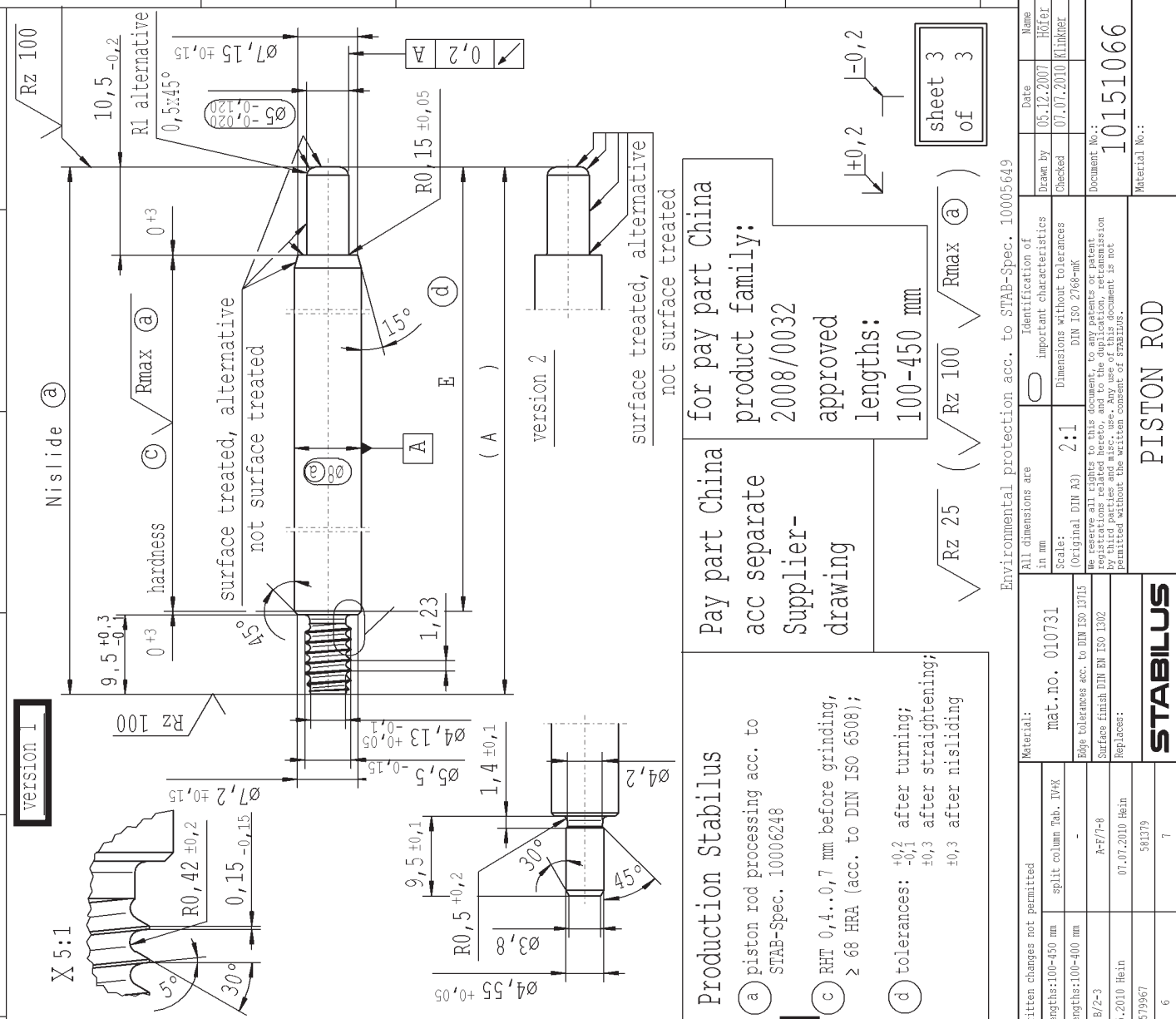


supp. No.	material no.	surface treatment processing acc. to STAB-Spec.	10006248 Tab. IV	10006248 Tab. X	10028959 Tab. I China pay part	A overall length	E length without endfitting stud	F version
64	456976	456976	456976	456976	456976	372.0	362.5	1
65		496172	496172	496172	496172	223.0	213.5	1
66		460323	460323	460323	460323	306.0	296.5	1
67	183084		183084	183084	183084	198.0	188.5	1
68	328874	328874	328874	328874	328874	327.0	317.5	1
69	539433	539433	539433	539433	539433	339.0	329.5	1
70	297088	297088	297088	297088	297088	201.0	191.5	1
71	333655	333655	333655	333655	333655	132.5	123.0	1
72		333894	333894	333894	333894	246.0	236.5	1
73	364009	364009	364009	364009	364009	291.0	281.5	1
74	754298	754298	754298	754298	754298	219.0	209.5	1
75	960316	960316	960316	960316	960316	261.0	251.5	1
76	626434	626434	626434	626434	626434	276.0	266.5	1
77	859698	859698	859698	859698	859698	340.5	331.0	1
78	484232	484232	484232	484232	484232	258.0	248.5	1
79	500962	500962	500962	500962	500962	234.0	224.5	1
80	201257	201257	201257	201257	201257	192.0	182.5	1
81	135533	135533	135533	135533	135533	168.0	158.5	1
82	611382	611382	611382	611382	611382	177.0	167.5	1
83	077935	077935	077935	077935	077935	159.5	150.0	1
84	088451	088451	088451	088451	088451	165.5	156.0	1
85	147486	147486	147486	147486	147486	114.0	104.5	1
XX	XXXXXX	XXXXXX	XXXXXX	XXXXXX	XXXXXX	99	89.5	1



Production Stabilus
 a) piston rod processing acc. to STAB-Spec. 10006248
 c) RHT 0,4..0,7 mm before grinding, ≥ 68 HRA (acc. to DIN ISO 6508);
 d) tolerances: $\begin{matrix} +0,2 \\ -0,1 \end{matrix}$ after turning; $\begin{matrix} +0,3 \\ -0,3 \end{matrix}$ after straightening; $\begin{matrix} +0,3 \\ -0,3 \end{matrix}$ after nisilding

Pay part China acc separate Supplier-drawing lengths: 100-450 mm
 Pay part China for pay part China product family: 2008/0032 approved lengths: 100-450 mm
 surface treated, alternative not surface treated
 Environmental protection acc. to STAB-Spec. 10005649

sheet 3 of 3

DE: X	EN: X	ES: X	IT: X	FR: X	RO: X	CAD created document; handwritten changes not permitted	Material: Mat.no. 010731	All dimensions are in mm	Identification of important characteristics	Name
new	Pos. 026, Pos. 027, Pos. 028, Pos. 029	Pos. 027, 028, 029, 030, 031	Pos. 027, 028, 029, 030, 031	Pos. 027, 028, 029, 030, 031	Pos. 027, 028, 029, 030, 031	split column Tab. IV-X		Scale: (Original DIN A3) 2:1	Dimensions without tolerances	Drawn by 05.12.2007 Höfer
old	SN 10001097	SN 10001097	SN 10001097	SN 10001097	SN 10001097			Scale: (Original DIN A3) 2:1	Dimensions without tolerances	Checked 07.07.2010 Klümmer
Field								Scale: (Original DIN A3) 2:1	Dimensions without tolerances	
Date/Name	29.05.2008 Hein	23.04.2009 Hein	10.05.2010 Hein	07.07.2010 Hein	07.07.2010 Hein			Scale: (Original DIN A3) 2:1	Dimensions without tolerances	Document No.: 10151066
Chg. No.	565587	571420	579967	581379	581379			Scale: (Original DIN A3) 2:1	Dimensions without tolerances	Material No.: 10151066
Rev.	3	4	5	6	7			Scale: (Original DIN A3) 2:1	Dimensions without tolerances	