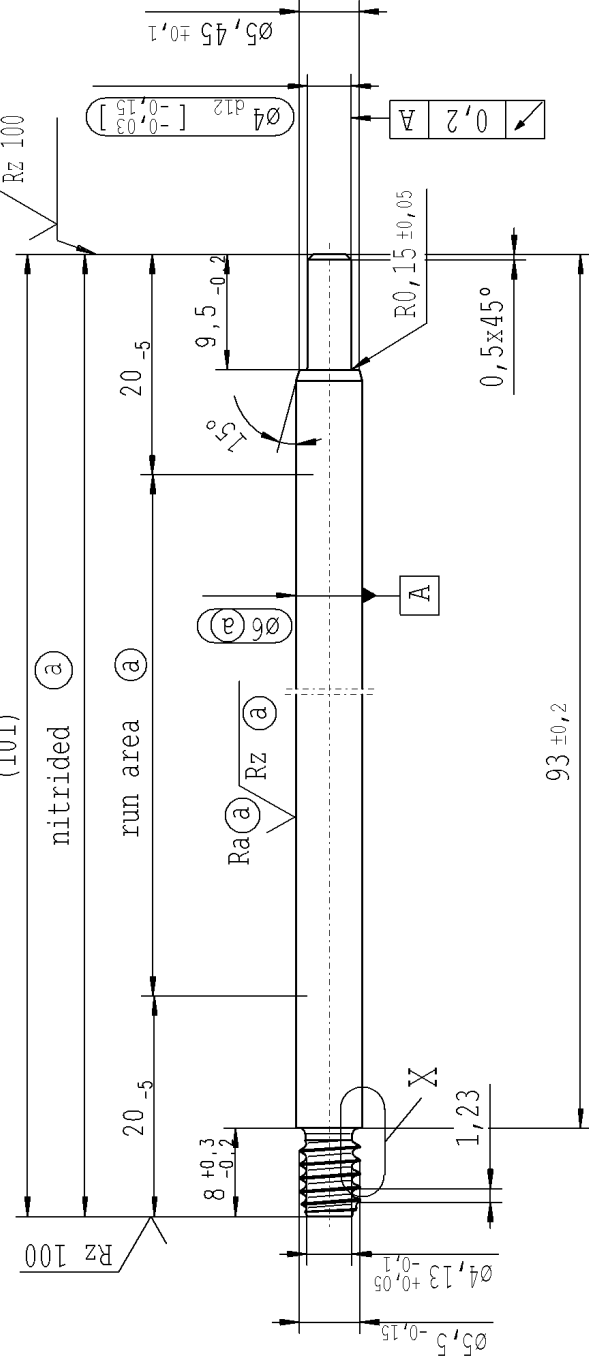
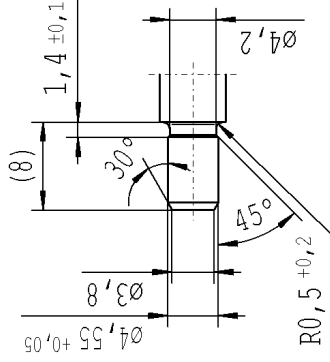


① piston rod processing per STAB-Spec. 10028959, table 1

(101)

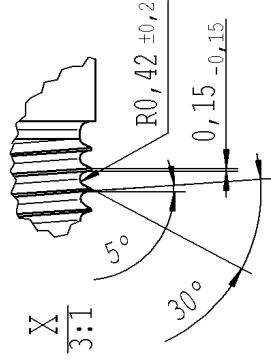


pre-worked:



RELEASE
for supplier
company Zhang Shi
20.01.2016 / A.Schilz
(date / signature)

$\sqrt{Rz\ 25}$ ($\sqrt{Rz\ 100}$) $\sqrt{Ra(a)}$ $\sqrt{Rz(a)}$ $\sqrt{+0,2}$ $\sqrt{-0,2}$



The print-out is not subject to the modification service.

Intended for internal and supplier use

Ident., Doc.: L20

A	Environmental protection acc. to STAB-Spec. 10005649	Identification of important characteristics	Date	Name
B	All dimensions are in mm	Dimensions without tolerances	Drawn by	Höfer
C	Material: 1.1193 S45C JISG 4051	Scale: (Original DIN A3) 2:1	Checked	20.01.2016 Müller
D	Edge tolerances acc. to DIN ISO 13715	Surface finish: DIN EN ISO 1302	Replaces:	Document No.: 10151336
E	Replaces:	Replaces:	Replaces:	Material No.: 333908
F	Material: 1.1193 S45C JISG 4051	Surface finish: DIN EN ISO 1302	Replaces:	Material No.: 10151336
G	Edge tolerances acc. to DIN ISO 13715	Surface finish: DIN EN ISO 1302	Replaces:	Material No.: 333908
H	Replaces:	Replaces:	Replaces:	Material No.: 10151336
I	Replaces:	Replaces:	Replaces:	Material No.: 333908

***** Druckdatum: 1/21/2016 / 9:26:49 AM ***** Ausdruck nicht massstabem *****