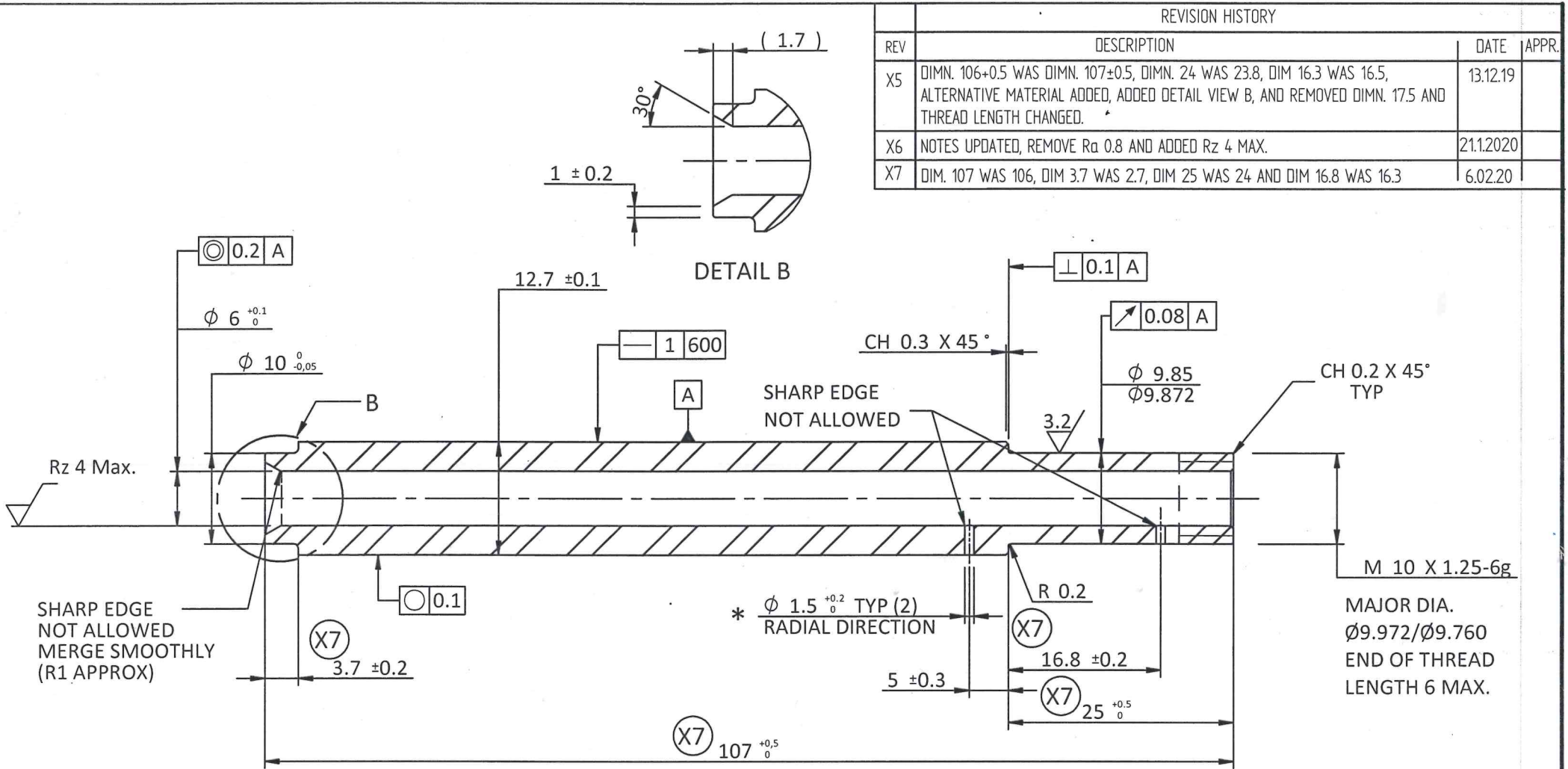


REVISION HISTORY			
REV	DESCRIPTION	DATE	APPR.
X5	DIMN. 106+0.5 WAS DIMN. 107±0.5, DIMN. 24 WAS 23.8, DIM 16.3 WAS 16.5, ALTERNATIVE MATERIAL ADDED, ADDED DETAIL VIEW B, AND REMOVED DIMN. 17.5 AND THREAD LENGTH CHANGED.	13.12.19	
X6	NOTES UPDATED, REMOVE Ra 0.8 AND ADDED Rz 4 MAX.	21.1.2020	
X7	DIM. 107 WAS 106, DIM 3.7 WAS 2.7, DIM 25 WAS 24 AND DIM 16.8 WAS 16.3	6.02.20	



DRAWING ONLY FOR PROTO SAMPLE, NOT FOR PRODUCTION

NOTES:-

1. MATERIAL:- COLD DRAWN AND GROUND - BRIGHT BAR, 080A42 BS 970 PART 3. OR AISI / SAE 1045 (NORMALISED) OR EQUIVALENT. TENSILE STRENGTH 660 MPa MINIMUM.
2. REMOVE ALL SHARP CORNERS.
- * 3. FIRST DRILLING WITH $\phi 1.4$ DRILL AND THEN REAMING WITH $\phi 1.5$ REAMER.
4. TOOL MARKS, SCRATCH MARKS OR STEP MARKS ARE NOT ALLOWED THROUGHOUT BORE.
5. BURR NOT ALLOWED THROUGHOUT BORE.
6. COMPONENT SHOULD MEET REACH AND ROHS STANDARD REQUIREMENTS

		NAME	DATE	DUROSHOX PVT,LDT	
DRAWN	S.P.		6.02.2020	TITLE HOLLOW PISTON ROD (SEMI FINISHED)	
CHECKED	VR		6.02.2020		
ENG APPR	D.A.		6.02.2020		
MGR APPR					
UNLESS OTHERWISE SPECIFIED DIMENSIONS ARE IN MILLIMETERS ANGLES $\pm 2.0^\circ$ LINEAR ± 0.25				SIZE A4	DWG NO DS-254286
				SCALE: 1:1	WEIGHT:0.069 KG
				SHEET 1 OF 1	