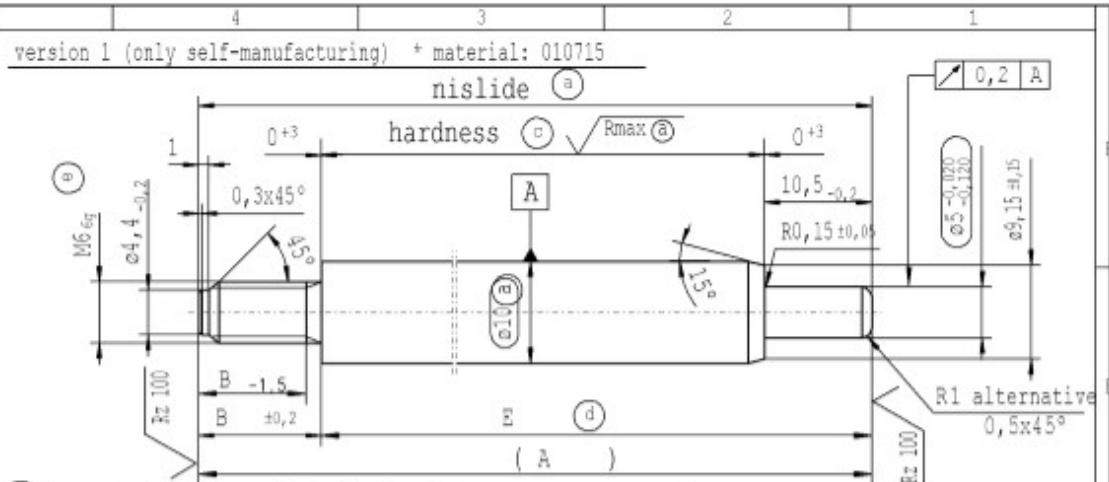
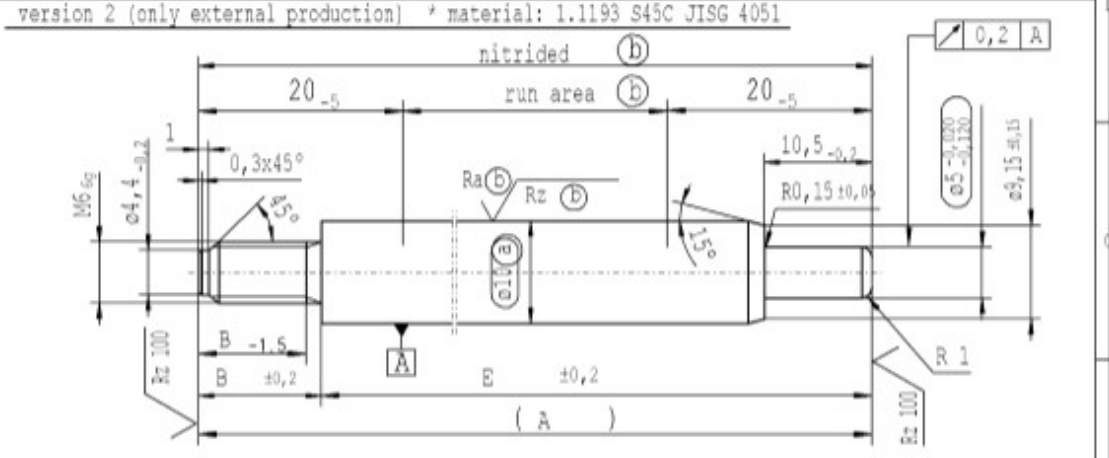


supp No.	material no.			A overall length	B thread length	E length without end-fitting stud
	processing and surface treatment acc. to STAB-Spec.					
	10006248 Tab. IV version 1	10006248 Tab. X version 1	10028959 Tab. I version 2			
1	484223	484223		195	7	188
2	772937	772937		207	7	200
3	642927	642927		102	7	95
4	424728	424728		300	7	293
5	424967	424967		501	7	494
6	320763	320763		87	7	80
7	346097	346097		456	7	449
8	302605	302605		198	7	191
9	436210	436210		159	7	152
10	587500	587500		450	7	443
11	638885	638885		399	7	392
12	199366	199366		213	7	206
13	579854	579854		282	7	275
14	580332	580332		276	7	269
15	581288	581288		201	7	194
16	353761	353761		234	7	227
17	881715	881715		177	7	170
18	848495	848495		297	7	290
XX	XXXXXX	XXXXXX	XXXXXX	105	10	95



(c) before grinding: Hardness depth and hardness test acc. to STAB-Spec. 10258370
 (e) threaded stud rough-turned dim. ø5,29 -0,06 thread roll tolerance 6e thread tolerances acc. to DIN ISO 965-3
 (d) tolerances: $\pm 0,1$ after turning; $\pm 0,3$ after straightening; $\pm 0,3$ after nisliding



thread tolerances acc. to DIN ISO 965-3 approved lengths: 50-600 mm

$\sqrt{Rz 25}$ ($\sqrt{Rz 100}$ \sqrt{Rmax} (a) Ra (b) Rz (b)) $\begin{matrix} \swarrow +0,2 \\ \searrow -0,2 \end{matrix}$

sheet 1 of 1

EN						
D						
E						
F						
G						
H						
I						
J						
K						
L						
M						
N						
O						
P						
Q						
R						
S						
T						
U						
V						
W						
X						
Y						
Z						

DB: X EN: X RS: IT: PR: RR: RO: X				CND created document; handwritten changes not permitted		Material: *		Environmental protection acc. to STAB-Spec. 10005649	
new product family: 2016/0254		acc. STAB-Spec. 10258370		new format Internal/Supplier		All dimensions are in mm		Marking of special characteristics according to STAB-Spec. 10210932	
old product family: 2012/0213		RHT 0,4 ... 0,7 mm		Supplier drawing separately		Scale: (Original DIN A3) 2:1		Dimensions without tolerances DIN ISO 2768-MK	
Field B-5/2		C 5-6				Edge tolerances acc. to DIN ISO 13715		No transfer all rights to this document, to any patents or patent registrations related thereto, and to the application, dissemination by third parties and also, any use of this document is not permitted without the written consent of STABILUS.	
Date/Name: 02.03.2016 Heis		15.05.2019 Donat		16.06.2020 Höfer		Surface finish: DIN EN ISO 1392		Document No.: 10160325	
Chg. No.: 614638		678703		688989		Replaces:		Material No.:	
Rev.: 5		6		7		STABILUS		PISTON ROD	

