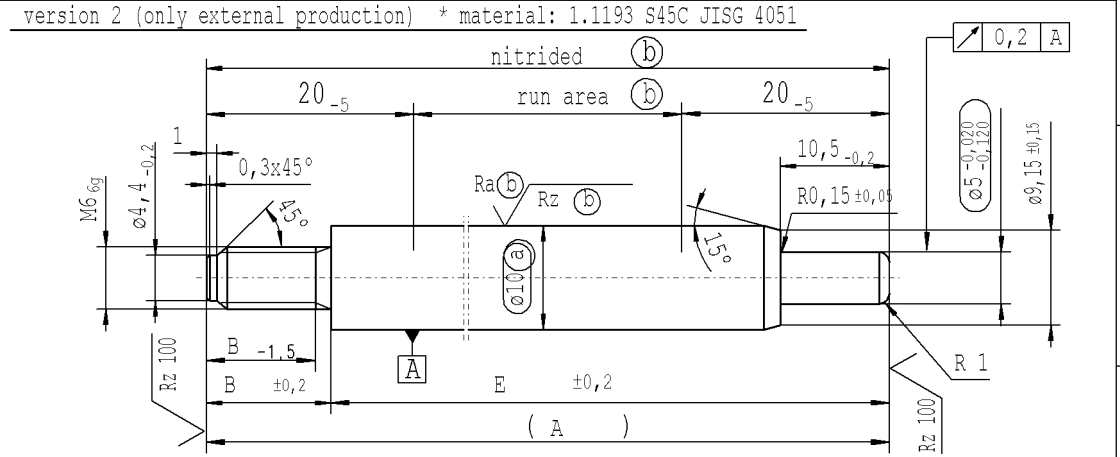
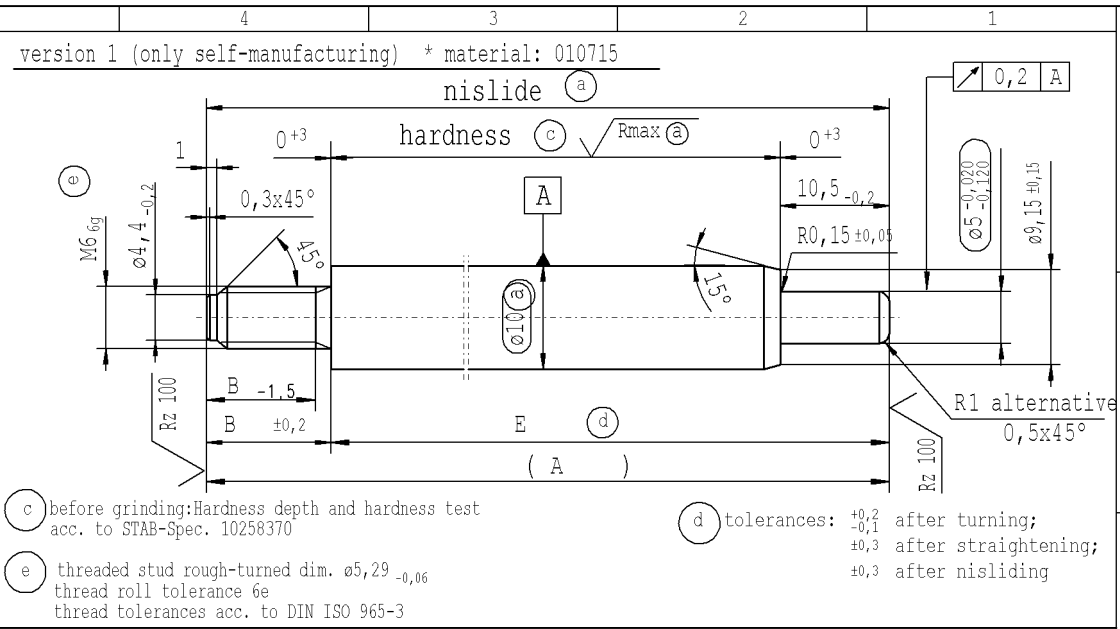


The print-out is not subject to the modification service.

Intended for internal and supplier use

Ident. Doc.: ERP-11.docx; 26/07/2021 - 10:11

supp. No.	material no.			A	B	E
	10006248 Tab. IV (a) version 1	10006248 Tab. X (a) version 1	10028959 Tab. I (b) version 2			
F	1	484223	484223	195	7	188
	2	772937	772937	207	7	200
	3	642927	642927	102	7	95
	4	424728	424728	300	7	293
	5	424967	424967	501	7	494
E	6	320763	320763	87	7	80
	7	346097	346097	456	7	449
	8	302605	302605	198	7	191
	9	436210	436210	159	7	152
	10	587500	587500	450	7	443
	11	638885	638885	399	7	392
	12	199366	199366	213	7	206
D	13	579854	579854	282	7	275
	14	580332	580332	276	7	269
	15	581288	581288	201	7	194
	16	353761	353761	234	7	227
	17	881715	881715	177	7	170
	18	848495	848495	297	7	290
C	19	314093	314093	228	7	221
	20	498123	498123	447	7	440
	21	829855	829855	123	7	116
	22	294735	294735	114	7	107
B	XX	XXXXXX	XXXXXX	378	7	371
A						



thread tolerances acc. to DIN ISO 965-3 approved lengths: 50-600 mm

$\sqrt{Rz\ 25}$  ( $\sqrt{Rz\ 100}$   $\sqrt{Rmax\ (a)}$   $\sqrt{Ra\ (b)}$   $\sqrt{Rz\ (b)}$ )  $\begin{matrix} \swarrow +0,2 \\ \searrow -0,2 \end{matrix}$

sheet 1 of 1

DE: X				EN: X				ES: IT:				PR: FR: RO: X				Material: *				All dimensions are in mm				Marking of special characteristics according to STAB-Spec. 10270932				Date		Name	
new				product family: 2016/0250				Ⓒ = acc. STAB-Spec. 10258370				new format Internal/Supplier				Edge tolerances acc. to DIN ISO 13715				Scale: (Original DIN A3) 2:1				Dimensions without tolerances DIN ISO 2768-mK				19.11.2008		Hein	
old				product family: 2012/0213				Ⓒ = RHT 0,4 ... 0,7 mm				Supplier drawing separately				Surface finish DIN ISO 1302				We reserve all rights to this document, to any patents or patent registrations related hereto, and to the duplication, retransmission by third parties and misc. use. Any use of this document is not permitted without the written consent of STABILUS.				16.06.2020		Klinkner					
Field				B-C/2				C 5-6								Replaces:				Document No.: 10160325											
Date/Name				02.03.2016 Hein				15.05.2019 Donat				16.06.2020 Höfer																			
Chg. No.				634638				678703				688989																			
Rev.				5				6				7																			

**STABILUS**

PISTON ROD

