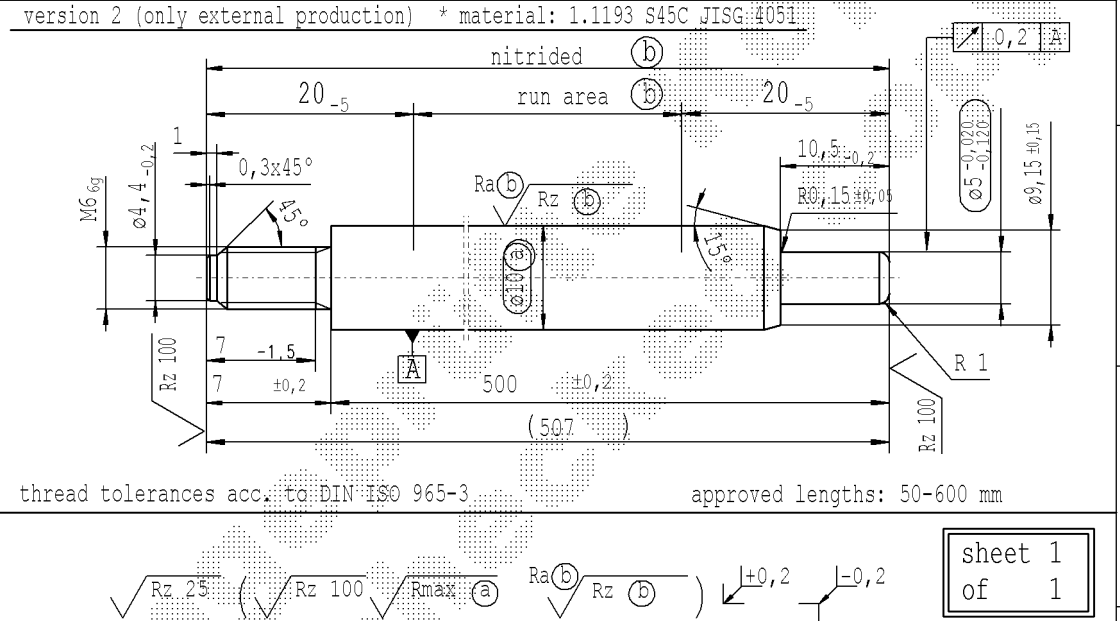
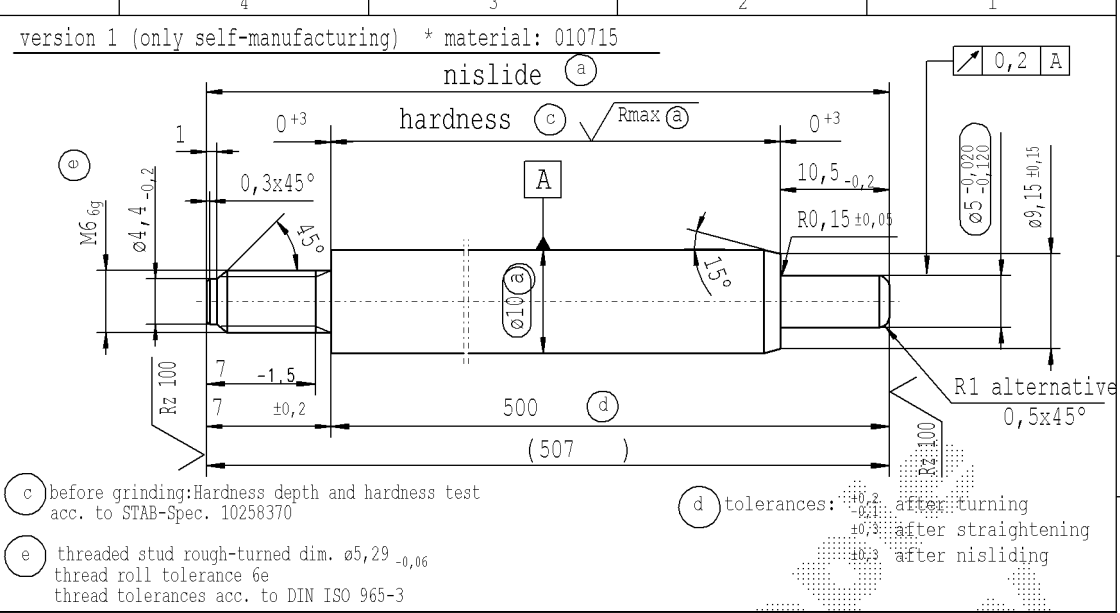


The print-out is not subject to the modification service.

Intended for internal and supplier use

Ident. Doc.: Ertel1.docx: 18/02/2021 - 11:32

supp No.	material no.			A overall length	B thread length	E length without end-fitting stud
	10006248 Tab. IV version 1	10006248 Tab. X version 1	10028959 Tab. I version 2			
1		484223	484223	195	7	188
2	772937	772937	772937	207	7	200
3	642927	642927	642927	102	7	95
4	424728	424728	424728	300	7	293
5	424967	424967	424967	501	7	494
7	346097	346097	346097	456	7	449
8	302605	302605	302605	198	7	191
9	436210	436210	436210	159	7	152
10	587500	587500	587500	450	7	443
11	638885	638885	638885	399	7	392
12	199366	199366	199366	213	7	206
13	579854	579854	579854	282	7	275
14	580332	580332	580332	276	7	269
15	581288	581288	581288	201	7	194
16	353761	353761	353761	234	7	227
17	881715	881715	881715	177	7	170
18	848495	848495	848495	297	7	290
19	314093	314093	314093	228	7	221
20	498123	498123	498123	447	7	440
21	829855	829855	829855	123	7	116
22	294735	294735	294735	114	7	107
23	097800	097800	097800	507	7	500



thread tolerances acc. to DIN ISO 965-3 approved lengths: 50-600 mm

$\sqrt{Rz 25}$  ( $\sqrt{Rz 100}$   $\sqrt{R_{max}}$  (a)  $\sqrt{Ra}$  (b)  $\sqrt{Rz}$  (b))  $\pm 0,2$   $\pm 0,2$

sheet 1 of 1

DE: X		EN: X		ES:		IT:		PR:		FR:		RO: X		CAD created document handwritten changes not permitted		Material: *		All dimensions are in mm		Marking of special characteristics according to STAB-Spec. 10270932		Date		Name	
new		product family: 2016/0250		acc. STAB-Spec. 10258370		new format Internal/Supplier												Scale: (Original DIN A3) 2:1		Dimensions without tolerances DIN ISO 2768-mK		19.11.2008		Hein	
old		product family: 2012/0213		RHT 0,4 ... 0,7 mm		Supplier drawing separately																16.06.2020		Klinkner	
Field		B-C/2		C 5-6																		Document No.: 10160325		Material No.:	
Date/Name		02.03.2016 Hein		15.05.2019 Donat		16.06.2020 Höfer																			
Chg. No.		634638		678703		688989																			
Rev.		5		6		7																			

STABILUS PISTON ROD