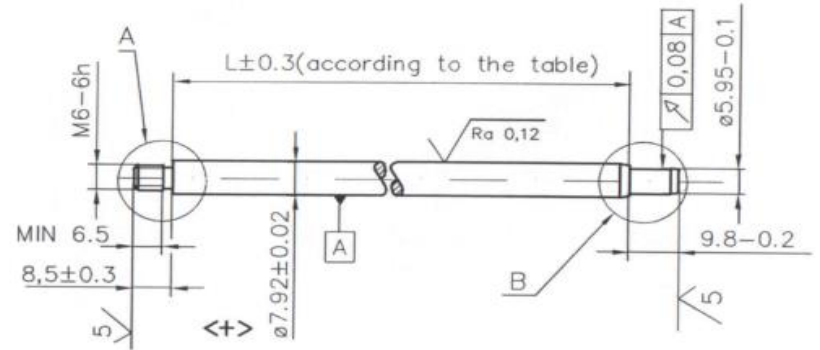


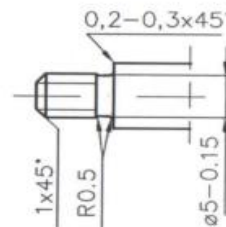
DATA	REW	ZM	OPIS ZMIANY	NR ZMIANY	WYK	ZATW
21.09.2020	01		tylko dla oferty			TK



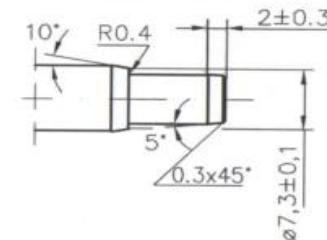
REMARKS:

- <+>1. IN LENGTH L IS UNACCEPTABLE DEFECTS FACES OF
2. STRAIGHTNESS MAX. 0,1mm ALL ALONG FOR L<120mm.
AND MAX 0,1 IN LENGTH 100mm FOR L>=120mm.
3. PISTON ROD:
- nitrated a. oxidized
 - Compound layer: to supplier standard
 - Layer hardness: to supplier standard
 - Corrosion resistance 120h acc. ISO 9227 NSS. (no corrosion)
 - Color: brown-black

SZCZEGÓŁ A. 2:1



SZCZEGÓŁ B PODZ. 2:1



SYMBOL SYMBOL	Ilość charakterystyk No characteristic
<DP>	-
<DC>	-
<D>	-
<C+>	-
<+>	2

TOLERANCJE WYMIARÓW METROLOGICZNYCH WŁ: (ISO 2768 :89) PN-EN-22768:99-mk	MATERIAL: ROUND STEEL Material grade C35E acc. to EN 10083-2		METODA RZUTOWANIA			
	WYKONAL: TOMASZ KLATKA	DATA: 29.09.2020	CHARAKT. SPECJALNE	NAZWA: Piston rod		ARK./ARK-Y
	ZATWIERDZIL:	DATA: 29.09.2020	FORMAT: A2	MASA: [kg]		1/1
	PODZIAŁKA: 1:1				NR RYSUNKU: M27281	NR INDEKSU: acc. table

mm 0 10 20 30 40

零件号PN	规格Size	全长	行程L	图纸号
M27281	8*261.8	261.8	243.5	M27281
M27336	8*271.8	271.8	253.5	M27281
M27406	8*238.8	238.8	220.5	M27281
M27408	8*127.8	127.8	109.5	M27281
M27410	8*212.8	212.8	194.5	M27281
M27414	8*142.8	142.8	124.5	M27281
M27419	8*294.8	294.8	276.5	M27281
M27437	8*137.8	137.8	119.5	M27281
M27440	8*284.8	284.8	266.5	M27281
M27447	8*362.8	362.8	344.5	M27281
M27498	8*304.8	304.8	286.5	M27281
M27519	8*231.8	231.8	213.5	M27281
M27521	8*162.8	162.8	144.5	M27281
M27522	8*202.8	202.8	184.5	M27281
M27526	8*240.8	240.8	222.5	M27281
M27550	8*157.8	157.8	139.5	M27281
M27561	8*242.8	242.8	224.5	M27281
M27568	8*278.8	278.8	260.5	M27281
M27574	8*219.3	219.3	201	M27281
M27577	8*222.3	222.3	204	M27281
M27581	8*144.8	144.8	126.5	M27281
M27599	8*274.8	274.8	256.5	M27281
M27609	8*251.8	251.8	233.5	M27281
M27615	8*292.8	292.8	274.5	M27281
M27617	8*288.8	288.8	270.5	M27281
M27620	8*181.8	181.8	163.5	M27281
M27621	8*297.8	297.8	279.5	M27281
M27622	8*312.8	312.8	294.5	M27281
M27624	8*268.8	268.8	250.5	M27281
M27626	8*352.8	352.8	334.5	M27281
M27627	8*152.8	152.8	134.5	M27281
M27682	8*308.8	308.8	290.5	M27281
M27697	8*259.8	259.8	241.5	M27281
M27777	8*114.3	114.3	96	M27281
M27785	8*318.8	318.8	300.5	M27281
M27809	8*368.8	368.8	350.5	M27281
M27810	8*263.8	263.8	245.5	M27281
M27811	8*337.3	337.3	319	M27281
M27813	8*216.3	216.3	198	M27281
M27818	8*234.8	234.8	216.5	M27281
M27963	8*172.8	172.8	154.5	M27281
M27992	8*257.8	257.8	239.5	M27281
M28061	8*372.8	372.8	354.5	M27281
M28073	8*192.8	192.8	174.5	M27281
M28104	8*282.8	282.8	264.5	M27281
M28262	8*227.8	227.8	209.5	M27281
M28378	8*57.8	57.8	39.5	M27281
M28714	8*253.8	253.8	235.5	M27281
M28719	8*229.8	229.8	211.5	M27281
M28720	8*254.8	254.8	236.5	M27281
M28721	8*245.3	245.3	227	M27281
M28722	8*224.8	224.8	206.5	M27281
M28723	8*247.8	247.8	229.5	M27281
M28724	8*266.8	266.8	248.5	M27281
M28725	8*207.8	207.8	189.5	M27281
M28726	8*189.8	189.8	171.5	M27281