

The print-out is not subject to the modification service.

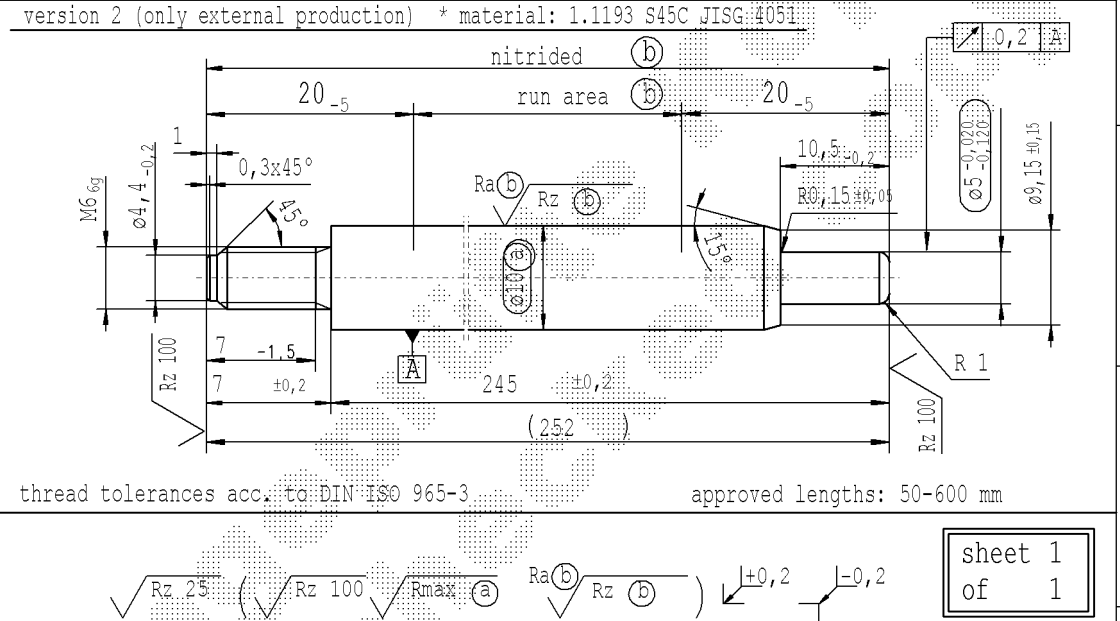
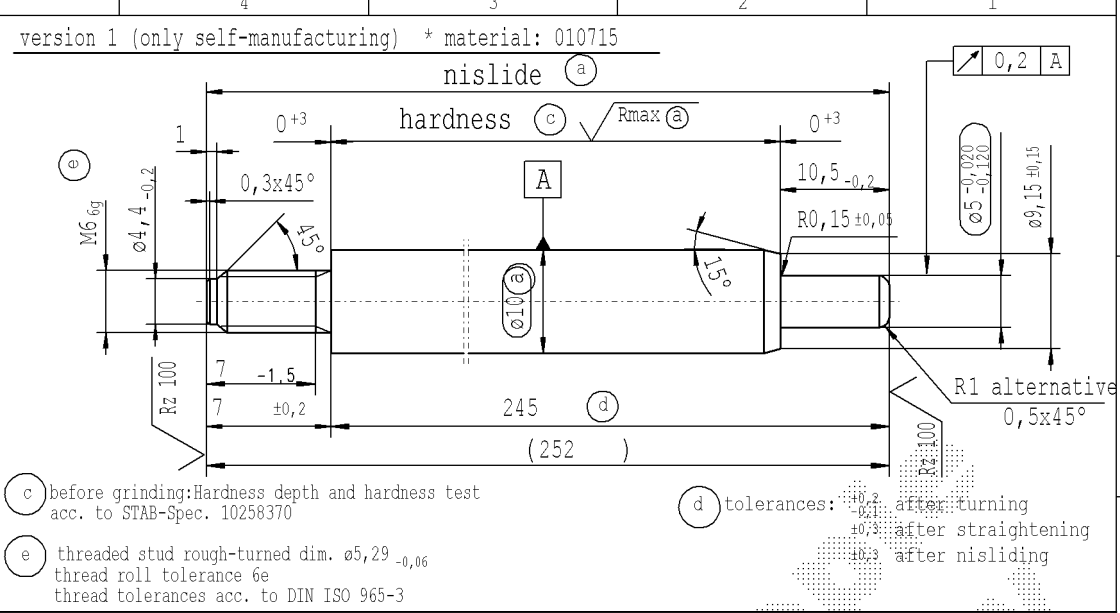
Intended for internal and supplier use

EN

Erzteilname: 6/8/2021 - 30.32

Ident. Doc.:

supp No.	material no.			A overall length	B thread length	E length without end-fitting stud
	10006248 Tab. IV version 1	10006248 Tab. X version 1	10028959 Tab. I version 2			
1		484223	484223	195	7	188
2	772937	772937	772937	207	7	200
3	642927	642927	642927	102	7	95
4	424728	424728	424728	300	7	293
5	424967	424967	424967	501	7	494
7	346097	346097	346097	456	7	449
8	302605	302605	302605	198	7	191
9	436210	436210	436210	159	7	152
10	587500	587500	587500	450	7	443
11	638885	638885	638885	399	7	392
12	199366	199366	199366	213	7	206
13	579854	579854	579854	282	7	275
14	580332	580332	580332	276	7	269
15	581288	581288	581288	201	7	194
16	353761	353761	353761	234	7	227
17	881715	881715	881715	177	7	170
18	848495	848495	848495	297	7	290
19	314093	314093	314093	228	7	221
20	498123	498123	498123	447	7	440
21	829855	829855	829855	123	7	116
22	294735	294735	294735	114	7	107
23	097800	097800	097800	507	7	500
24	590140	590140	590140	252	7	245



sheet 1 of 1

Material: *
All dimensions are in mm
Scale: (Original DIN A3) 2:1
Marking of special characteristics according to STAB-Spec. 10270932
Dimensions without tolerances DIN ISO 2768-mK
We reserve all rights to this document, to any patents or patent registrations related hereto, and to the duplication, retransmission by third parties and misc. use. Any use of this document is not permitted without the written consent of STABILUS.

Environmental protection acc. to STAB-Spec. 10005649

DE: X	EN: X	ES:	IT:	PR:	FR:	RO: X	Material: *	Scale: (Original DIN A3) 2:1	Marking of special characteristics according to STAB-Spec. 10270932	Date	Name
new	product family: 2016/0250	Ⓢ = acc. STAB-Spec. 10258370		CAD created document handwritten changes not permitted			Edge tolerances acc. to DIN ISO 13715	2:1	Dimensions without tolerances DIN ISO 2768-mK	19.11.2008	Hein
old	product family: 2012/0213	Ⓢ = RHT 0,4 ... 0,7 mm		Supplier drawing separately			Surface finish: DIN EN ISO 1302	2:1	Dimensions without tolerances DIN ISO 2768-mK	16.06.2020	Klinkner
Field	B-C/2	C 5-6					Regulations:	2:1	Dimensions without tolerances DIN ISO 2768-mK	Document No.: 10160325	
Date/Name	02.03.2016 Hein	15.05.2019 Donat		16.06.2020 Höfer						Material No.:	
Chg. No.	634638	678703		688989							
Rev.	5	6		7							

STABILUS PISTON ROD