

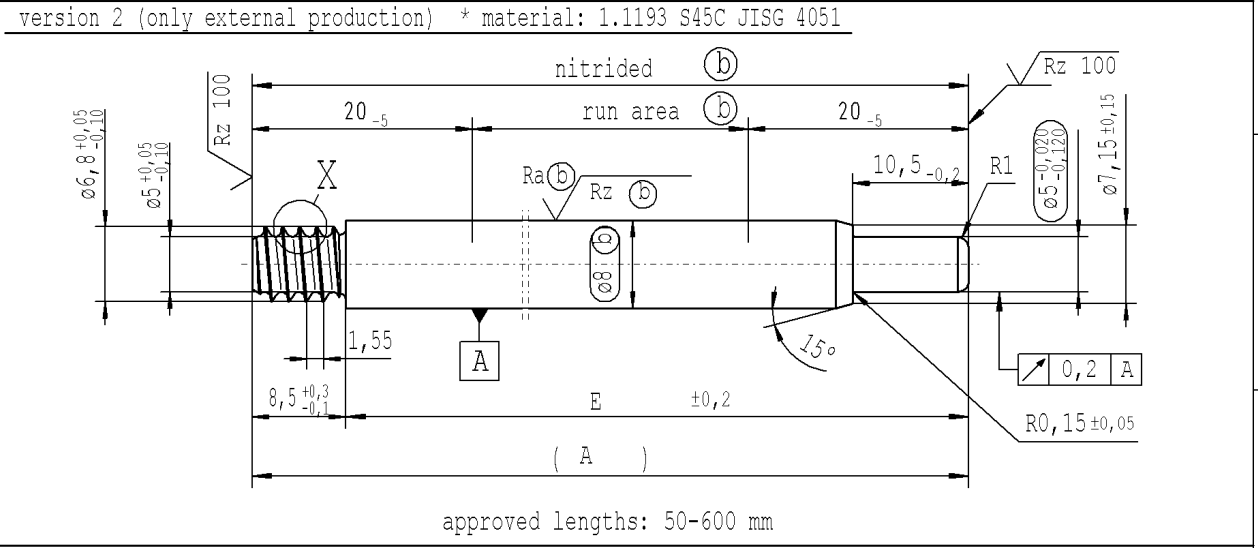
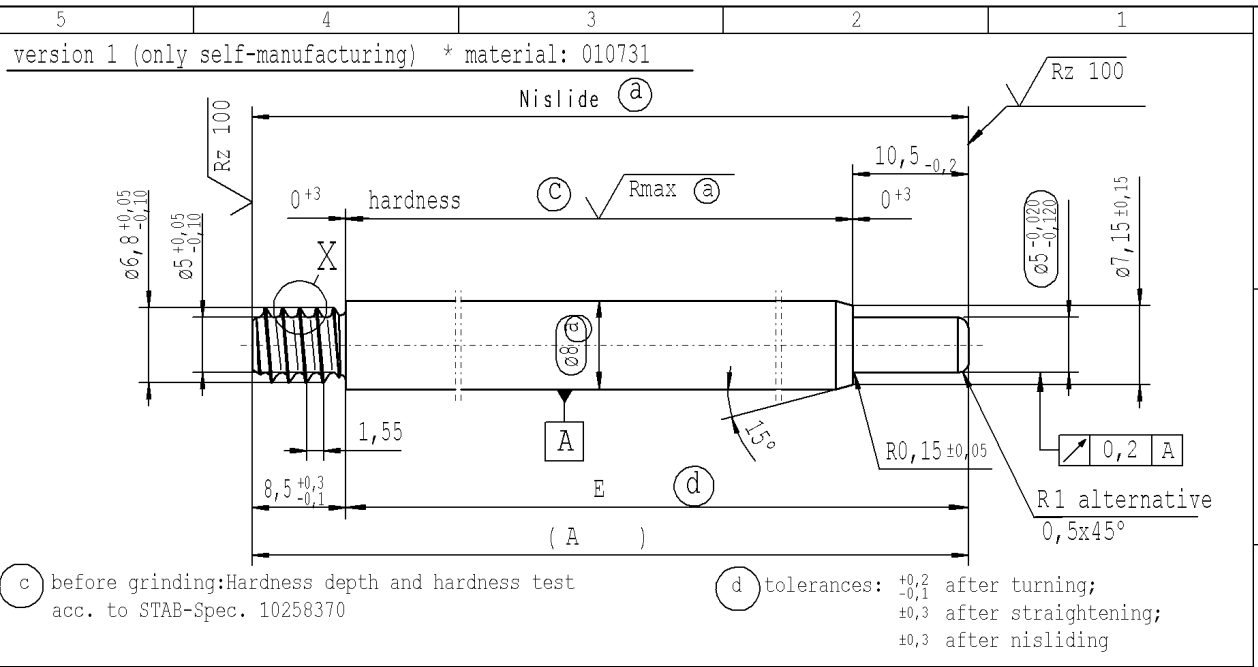
The print-out is not subject to the modification service.

Intended for internal and supplier use

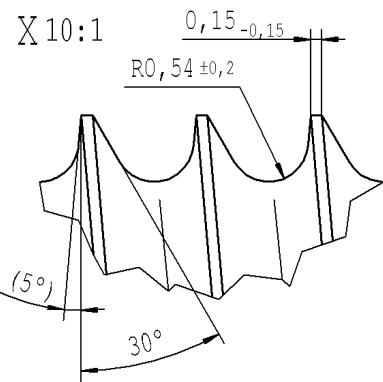
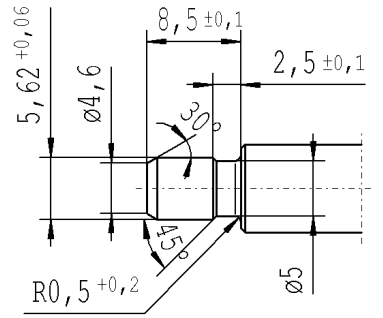
EN

Ident. Doc.:

supp No.	material no.			A	E
	processing and surface treatment acc. to STAB-Spec. 10006248 Tab. XVI optimized version 1	10006248 Tab. X version 1	10028959 Tab. I version 2	overall length	length without endfitting stud
328	989988	989988	989988	210.0	201.5
329	054065	054065	054065	198.0	189.5
330	150860	150860	150860	163.5	155.0
331	169741	169741	169741	123.0	114.5



pre-worked: (only self-manufacturing)



DE: X		EN: X	ES:	IT:	PR: X	FR:	RO: X	CAD created document; handwritten changes not permitted		Material: *	All dimensions are in mm			Marking of special characteristics according to STAB-Spec. 10270932		Date	Name	
new		(5°); no technical change, no new first sample required			Tab XVI; no technical change, no new first sample required							Scale: (Original DIN A3) 2:1		Dimensions without tolerances DIN ISO 2768-mK		Drawn by	Höfer	
old		5°			Tab IV;					Edge tolerances acc. to DIN ISO 13715						Checked	12.08.2021	Milles
Field		B/6-7			F 8					Surface finish DIN EN ISO 1302						Document No.:		10151065
Date/Name		31.03.2021 Hein			12.08.2021 Donat					Replaces:						Material No.:		
Chg. No.		696924			699704					Replaces:								
Rev.		21			21					STABILUS		PISTON ROD						

sheet 16 of 16