

The print-out is not subject to the modification service.

Intended for internal and supplier use

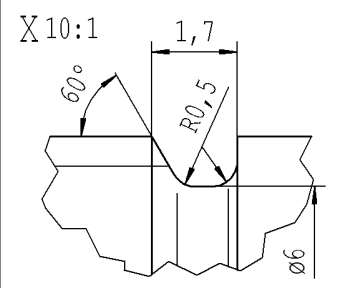
EN

Brestalidatum: 16/12/2020 - 9:36

Ident. Doc.:

supp No.	material no.			A	B	E
	10006248 Tab. IV (a) version 1	10006248 Tab. X (a) version 1	10028959 Tab. I (b) version 2			
1	228041	228041	228041	327	10	317
2	242624	242624	242624	303	9	294
3	243341	243341	243341	300	9	291
4	949592	949592	949592	249	10	239

X	xxxxxx	xxxxxx	xxxxxx	192	10	182
---	--------	--------	--------	-----	----	-----



- (c) before grinding:
Hardness depth and hardness test acc. to STAB-Spec. 10258370
- (d) tolerances: $\pm 0,2$ after turning;
 $\pm 0,3$ after straightening;
 $\pm 0,3$ after nisliding
- (e) threaded stud pre-turned
dimension $\varnothing 7,14_{-0,06}$
thread roll tolerance 6e
thread tolerances acc. to DIN ISO 965-3

AIAG CQI-standards acc. to STAB-Spec. 10027692

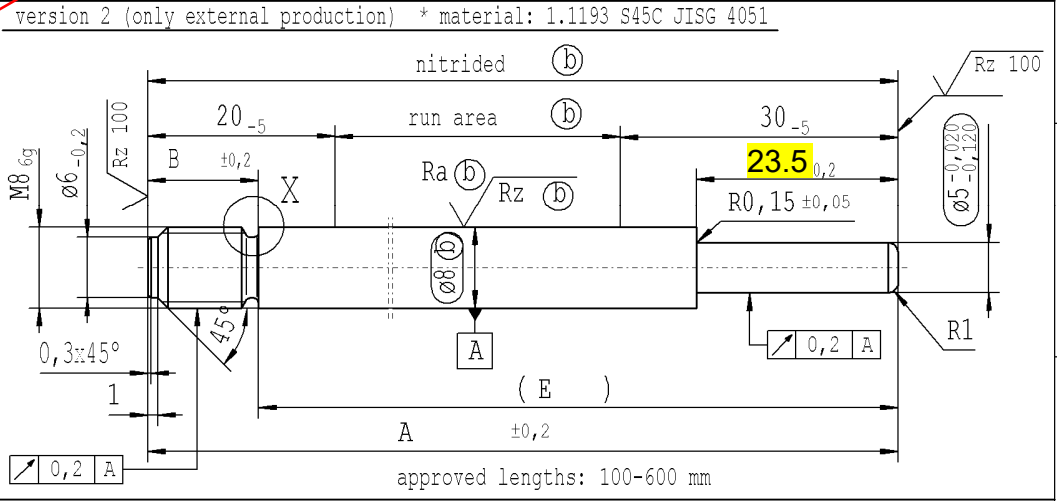
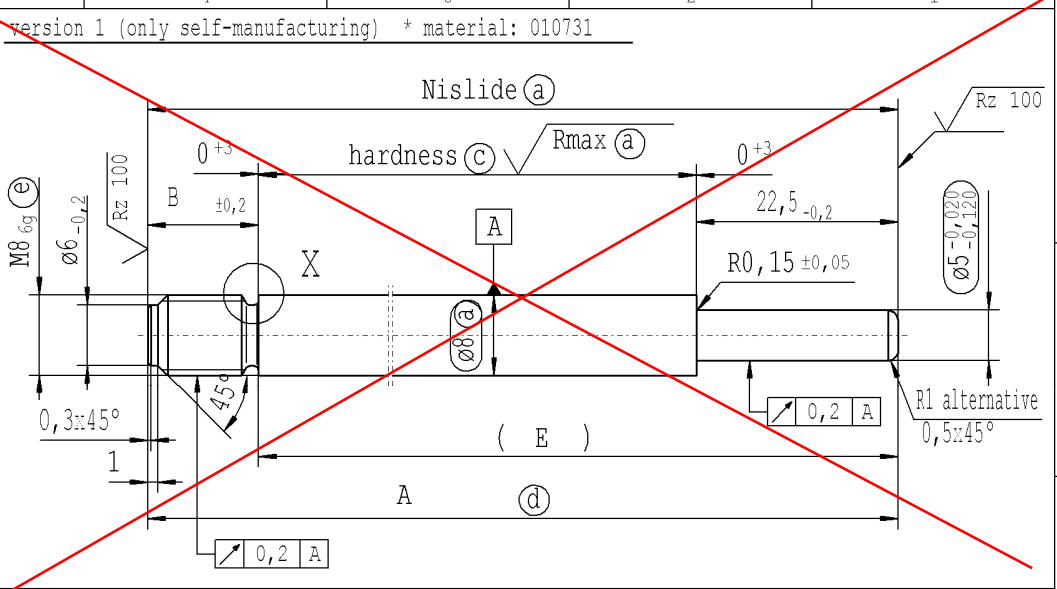
Environmental protection acc. to STAB-Spec. 10005649

DE: X	EN: X	ES:	IT:	PR:	FR:	RO: X	CAD created document; handwritten changes not permitted	Material: *
new	INITIAL RELEASE	product family: 2018/0260		© = acc. STAB-Spec. 10258370	new format Internal/Supplier			All dimensions are in mm
old	-	-		© = RHT 0,4 ... 0,7 mm	Supplier drawing separately			Marking of special characteristics according to STAB-Spec. 10270932
Field	-	-		B8	-			Scale: (Original DIN A3) 2:1
Date/Name	07.02.2018 Höfer	08.03.2018 Hein	24.04.2019 Höfer	12.11.2020 Hein				Dimensions without tolerances DIN ISO 2768-mK
Chg. No.	-	666490	678037	692034				We reserve all rights to this document, to any patents or patent registrations related hereto, and to the duplication, retransmission by third parties and misc. use. Any use of this document is not permitted without the written consent of STABILUS.
Rev.	0	1	2	3				Document No.: 10252085

STABILUS

PISTON ROD

Material No.:



approved lengths: 100-600 mm

$\sqrt{Rz\ 25}$ ($\sqrt{Rz\ 100}$ $\sqrt{Rmax\ (a)}$ $Ra\ (b)$ $Rz\ (b)$)

$\begin{matrix} \swarrow +0,2 \\ \searrow -0,2 \end{matrix}$

sheet 1 of 1