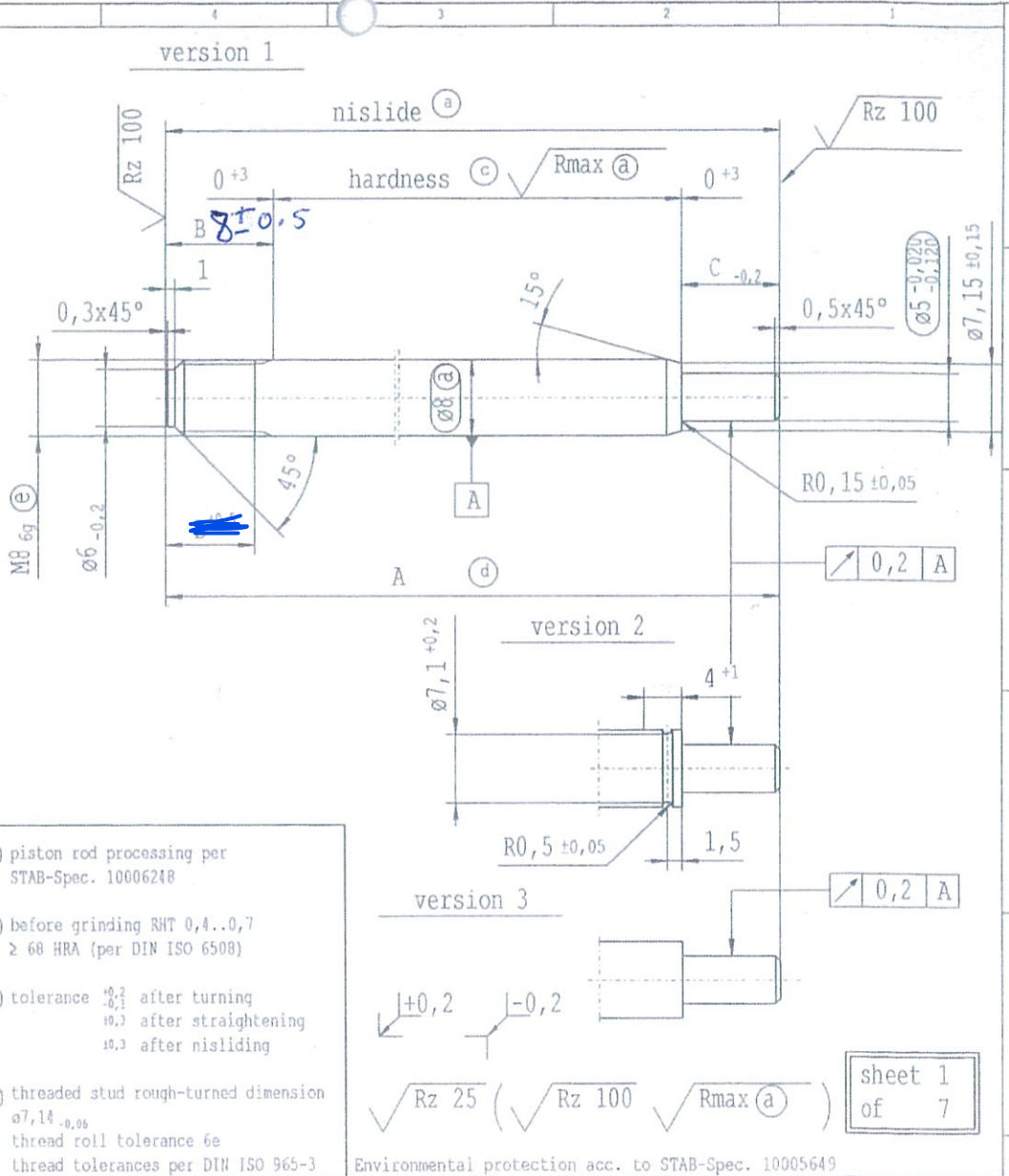


CONFIDENTIAL!  
Intended for internal use only

Ident. Doc.: SM 53.11-08/30-01 2014/08/04 - 11/17

supp. No.	material no.			A	B	C	D
	surface treatment processing acc. to STAB-Spec. 10006248			overall length	stud length end-fitting side	stud length piston side	version
	table IV Nislide black	table VIII Nislide black	table X Nislide "G"				
1	760536			261.0	10	11.5	2
2	339202			253.5	10	10.5	1
3	999024		999024	159.0	6	10.5	1
4	1404AQ			123.0	12	10.5	1
5	3247AQ			540.0	10	10.5	2
6	7585AV		7585AV	111.0	10	10.5	1
7	967807			288.0	10	16.5	3
8	2813AQ			207.0	10	10.5	1
9	726214		726214	189.0	10	10.5	1
10	166995		166995	258.0	10	10.5	1
11	9832AG			286.0	10	12.5	3
12	373737			372.0	25	10.5	1
13	316229			307.5	11	10.5	1
14	2845BK		2845BK	426.0	10	10.5	1
15	397822			366.0	20	16.5	3
16	488488			255.0	8	10.5	1
17	3221BW		3221BW	108.0	10	10.5	1
18	488941			354.0	10	10.5	1
19	330299			213.0	10	10.5	1
20	3743BT-			255.0	10	16.5	3
21	304638		304638	102.0	10	10.5	1
22	540285			174.0	10	10.5	1
23	557390			260.0	10	10.5	1
24	310638		310638	144.0	10	10.5	1
25	319309		2769QG	300.0	10	10.5	1
26	506184			192.0	20	10.5	1
27	2539CN			150.0	8	10.5	1
28	540293		STINZ	219.0	10	10.5	1
29	506214			273.0	20	10.5	1
30	344036			289.5	10	10.5	1



- (a) piston rod processing per STAB-Spec. 10006248
- (c) before grinding RHT 0,4..0,7 ≥ 60 HRA (per DIN ISO 6508)
- (d) tolerance  $\begin{matrix} +0,2 \\ 0,1 \end{matrix}$  after turning  
 $\begin{matrix} +0,3 \\ 0,2 \end{matrix}$  after straightening  
 $\begin{matrix} +0,3 \\ 0,2 \end{matrix}$  after nisliding
- (e) threaded stud rough-turned dimension  $\begin{matrix} +0,14 \\ -0,06 \end{matrix}$   
thread roll tolerance 6e  
thread tolerances per DIN ISO 965-3

Environmental protection acc. to STAB-Spec. 10005649

DE: X	EN: X	ES:	IT:	PR:	FR:	CAD created document; handwritten changes not permitted				Material:	All dimensions are in mm		Identification of important characteristics		Date	Name
now	as 1.11.11	doc.-No	Nislide "G"	TC 12/98	5	mat.No. 010731	DIN ISO 6508	1	Tab. IV + X	B=10 <sup>12</sup>	mat. no. 010731	Scale:	Dimensions without tolerances	Drawn by	01.04.1992	Kirsch
old	as 3.11.11	aug.-No	1	-	8	STAB-Spec. 10005193 (2)	DIN 50183	TC: 012/98	Tab. IV	B=8 <sup>12</sup>	Edge tolerances acc. to DIN ISO 13715	(Original DIN A3)	DIN ISO 2768-mK	Checked	17.07.2003	Fuhr.
Field	ZI	1	table	CD 3-5	table 3, 140	material	c	1	div. Pos.	Pos. 60	Surface finish DIN ISO 1392	We reserve all rights in this document, to any patents or patent registrations related hereto, and to the duplication, retransmission by third parties and disc. use. Any use of this document is not permitted without the written consent of STABILUS.		Document No.:	10003759	
Date/Name	08.04.1999 Jab.	11.06.1999 Jab	2.11.99 Kehlheim	08.01.2000 Fulze	23.05.2000 Jab.	07.02.2003 Seb	24.04.2003 Kannew.	17.07.2003 Seb	Replaces:		SW 53.11-08/30	Material No.:				
Chg. No.	505801	506370	507988	509180	510157	526454	528237	529961	STABILUS		PISTON ROD					
Rev.	21	22	23	24	25	26	27	28								