

The print-out is not subject to the modification service.

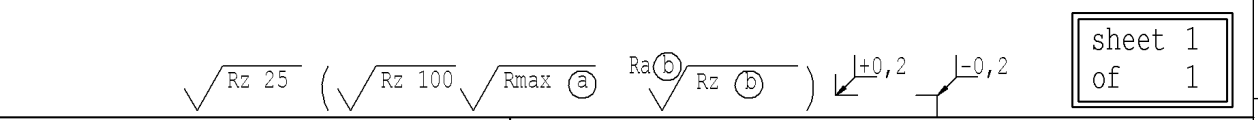
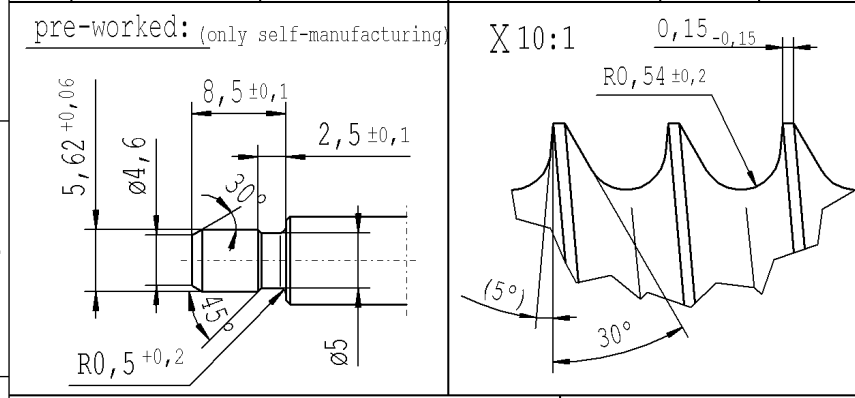
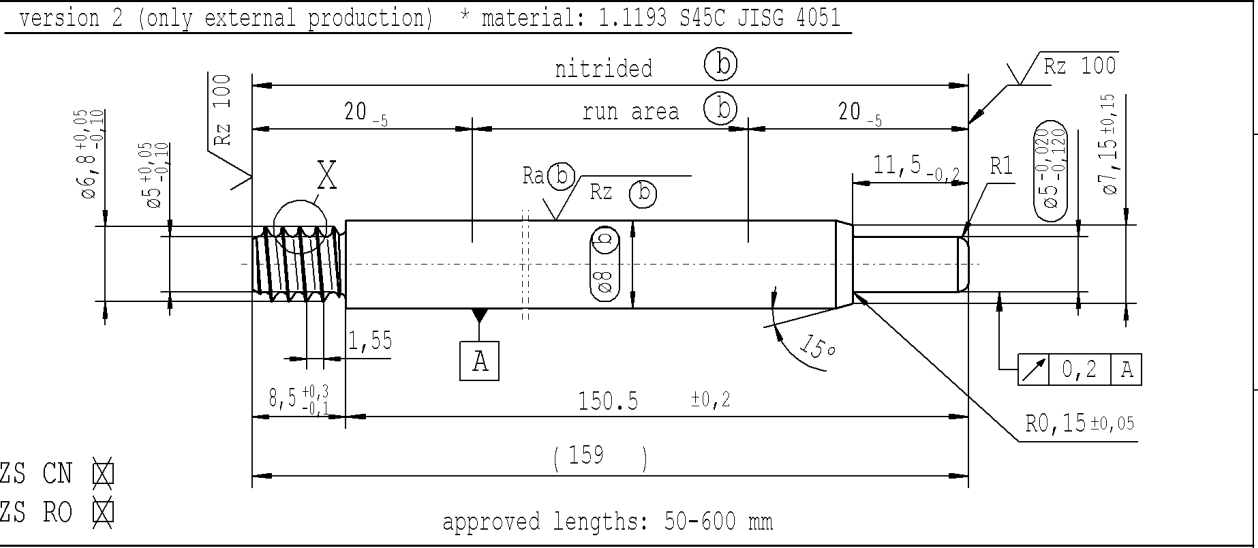
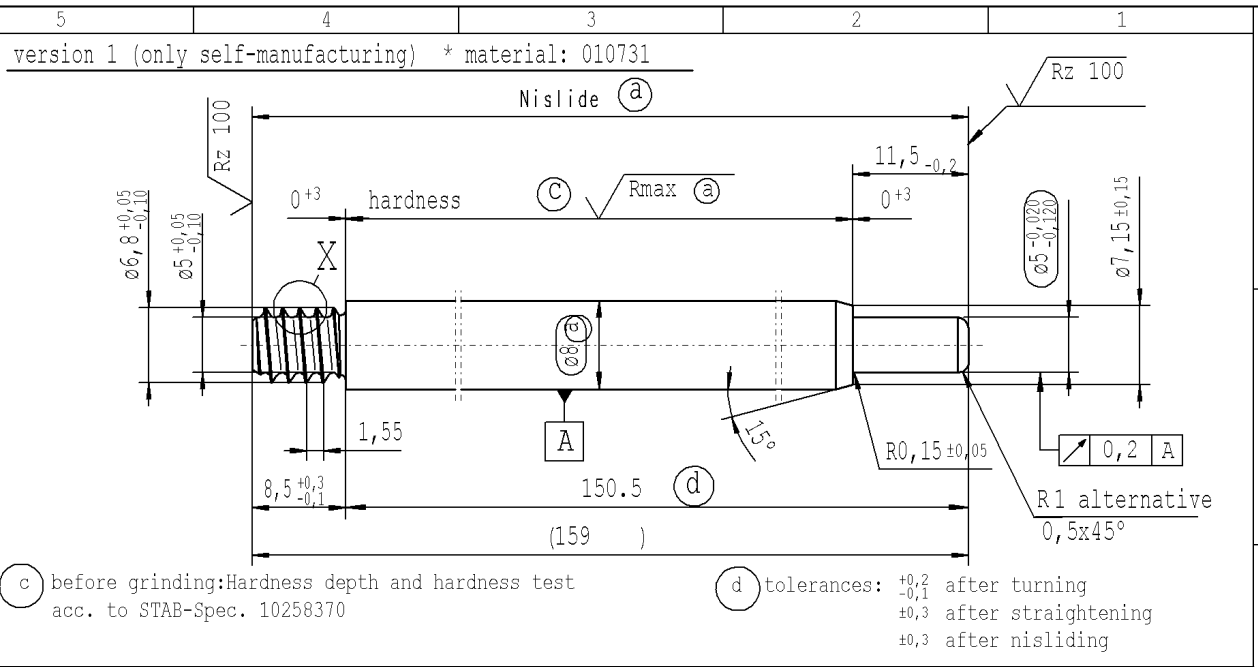
Intended for internal and supplier use

EN

Brevet.datum: 11/12/2022 - 10:42

Ident. Doc.:

| supp No. | material no. | | | A | E |
|----------|---|---------------|---------------|----------------|--------------------------------|
| | processing and surface treatment acc. to STAB-Spec. 10006248 Tab. XVI optimized | | | overall length | length without endfitting stud |
| | (a) version 1 | (a) version 1 | (b) version 2 | | |
| 1 | 559790 | 559790 | 559790 | 159 | 150.5 |
| 2 | 603049 | 603049 | 603049 | 276 | 267.5 |
| 3 | 690523 | 690523 | 690523 | 336 | 327.5 |
| 4 | 696259 | 696259 | 696259 | 297 | 288.5 |



sheet 1 of 1

| | | | | | | | |
|--|------------------|---|-----|--|-----|-------|--|
| AIAG CQI-standards acc. to STAB-Spec. 10027692 | | | | Environmental protection acc. to STAB-Spec. 10005649 | | | |
| DE: X | EN: X | ES: | IT: | PR: X | FR: | RO: X | CAD created document handwritten changes not permitted |
| new | Initial Release | ZS CN / ZS RO no technical change, no new first sample required | | | | | |
| old | - | - | | | | | |
| Field | - | B/5 | | | | | |
| Date/Name | 28.02.2022 Donat | 25.03.2022 Hein | | | | | |
| Chg. No. | - | 708853 | | | | | |
| Rev. | 0 | 0 | | | | | |
| Material: * | | | | All dimensions are in mm | | | |
| Edge tolerances acc. to DIN ISO 13715 | | | | Marking of special characteristics according to STAB-Spec. 10270932 | | | |
| Surface finish DIN EN ISO 1302 | | | | Scale: (Original DIN A3) 2:1 | | | |
| Replaces: | | | | We reserve all rights to this document, to any patents or patent registrations related hereto, and to the duplication, retransmission by third parties and misc. use. Any use of this document is not permitted without the written consent of STABILUS. | | | |
| STABILUS | | | | PISTON ROD | | | |
| | | | | Date: 28.02.2022 Name: Donat | | | |
| | | | | Checked: 25.03.2022 Klinkner | | | |
| | | | | Document No.: 10304156 | | | |
| | | | | Material No.: | | | |