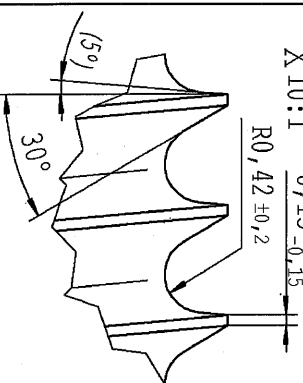
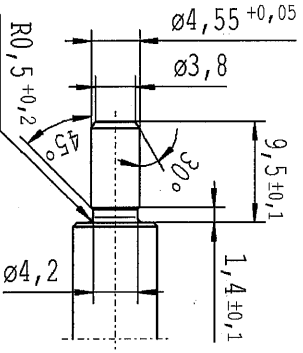


supp No.	material no.	A	F
125	428089	428089	282.0
126	430001	430001	228.0
127	125995	125995	180.0
128	718477	718477	279.0
129	824355	824355	288.0
130	248844	248844	303.0
131	301425	301425	126.0
132	098277	098277	276.0
133	183839	183839	315.0
134	272030	272030	90.0
135	514615	514615	279.0
136	517961	517961	258.0
137	519395	519395	288.0
138	529672	529672	264.5
139	684067	684067	103.0
140	151576	151576	224.0
141	400376	400376	211.5
142	451044	451044	235.5
143	451522	451522	133.0



pre-worked: (only self-manufacturing)

DE: X	EN: X	ES: X	FR: X	IT: X	PR: X	RO: X
Tab WIT no technical change, no new first sample required						
Tab IV						
F 8						
12.08.2021 Donat						
699704						
14						

AIAG CQI-standards acc. to STAB-Spec. 10027692

CMO created document handwritten changes not permitted

ZS CN / ZS RO no technical change, no new first sample required

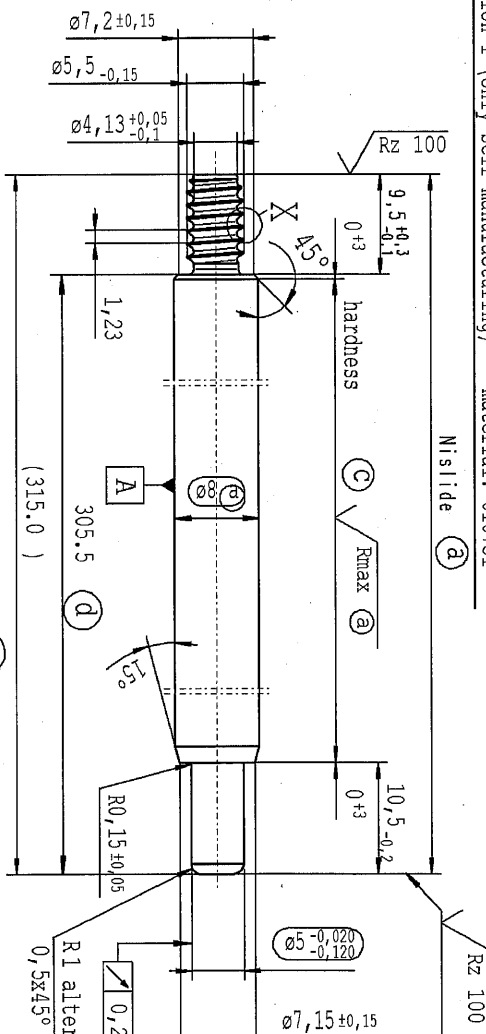
ZS CN / ZS RO no technical change, no new first sample required

10.03.2022 Hejn

707919

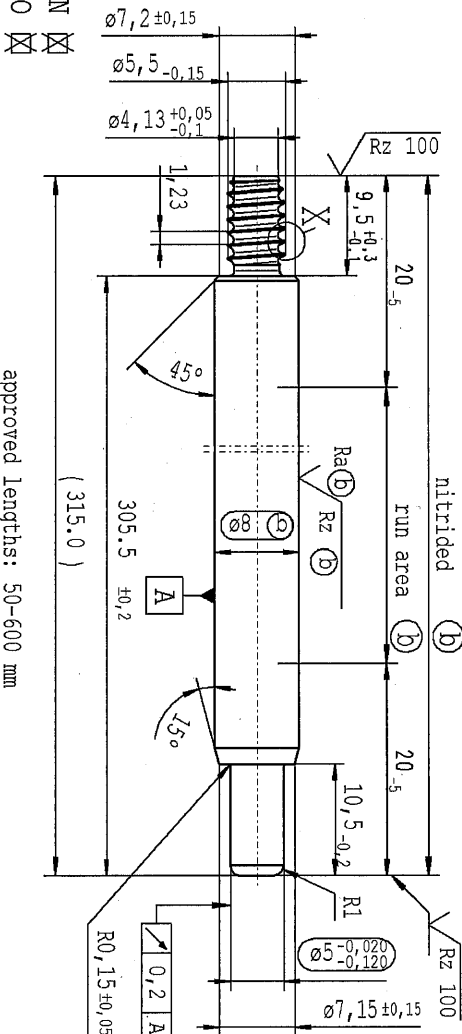
14

version 1 (only self-manufacturing) * material: 010731



c before grinding: Hardness depth and hardness test acc. to STAB-Spec. 10258370

version 2 (only external production) * material: 1.1193 S45C JISG 4051



approved lengths: 50-600 mm

Rz 25 (Rz 100) Rmax (Ra) Rz (R) +0.2 -0.2

Material: *

All dimensions are in mm

Scale: 2:1

Surface finish DIN EN ISO 1302

Replaces:

STABILUS

Environmental protection acc. to STAB-Spec. 10005649

Marking of special characteristics according to STAB-Spec. 1027052

Dimensions without tolerances

DIN ISO 2768-mK

No reference to this document, to non-tolerance or tolerance registration related hereto and to the application determination permitted without the written consent of STABILUS.

PISTON ROD

Sheet 7 of 12

Date: 05.12.2007

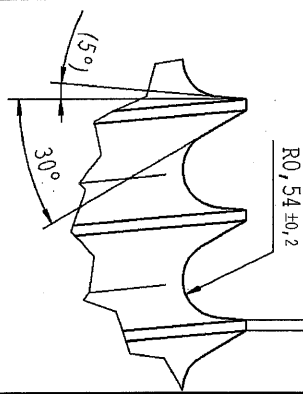
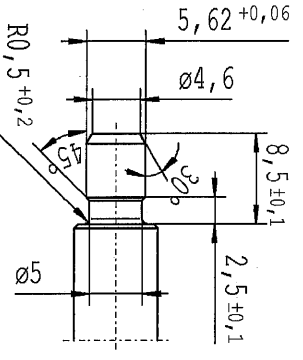
Drawn by: Hötter

Checked: 11.03.2022 Klühner

Document No.: 10151066

Material No.:

supp No.	material no.	A	F
Processing and surface treatment acc. to STAB-Spec. 10006248 Tab. XVI optimized	10006248 Tab. X	overall length	length without endfitting
version 1	version 1		std
328	989988	210.0	201.5
329	054065	198.0	189.5
330	150860	163.5	155.0
331	169741	123.0	114.5
332	223038	387.0	378.5
333	282788	358.0	349.5
334	462038	288.0	279.5
335	483070	273.0	264.5
336	504341	147.0	138.5
337	505297	224.5	216.0
338	507926	263.5	255.0
339	508404	246.5	238.0
340	518681	229.0	220.5
341	557638	281.0	272.5
342	641527	244.0	233.5
343	797116	194.0	185.5
344	797594	296.5	288.0
345	848979	241.5	233.0
346	853042	260.0	251.5



DF: X	EM: X	ES:	TT:	PR: X	FR:	RO: X
new	Tab XVI no technical change, no new first sample required					
old	Tab IV					
Field	F 8					
Date/Name	12.08.2021 Donat					
Chg. No.	699704					
Rev.	21					

AIAG CQI-standards acc. to STAB-Spec. 10027692

CAD created document handwritten changes not permitted

ZS CN / ZS RO no technical change, no new first sample required

Material: *

Surface finish DIN EN ISO 1302

Edge tolerances acc. to DIN ISO 13715

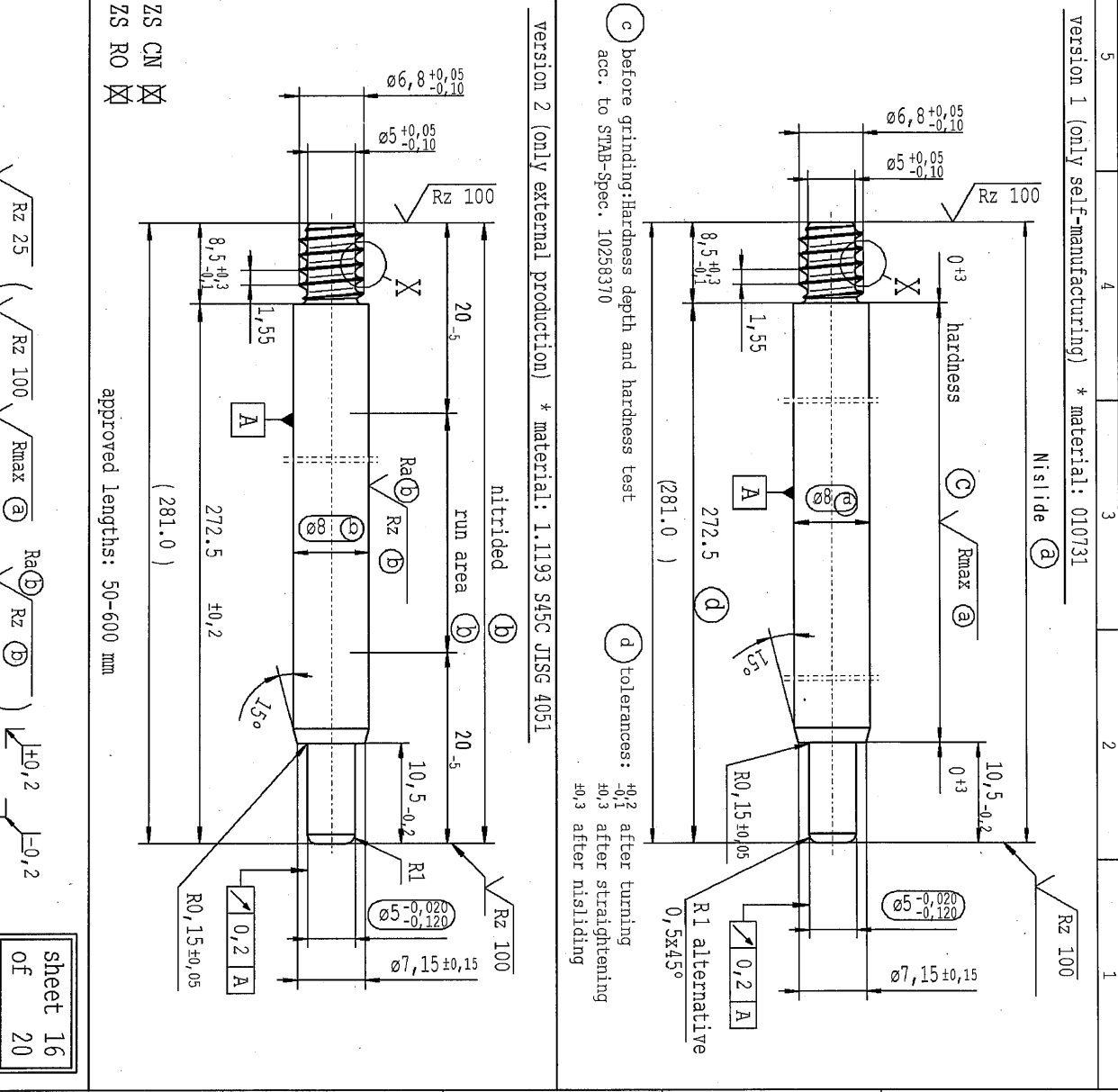
Replaces:

Environmental protection acc. to STAB-Spec. 10005649

Document No.: 10151065

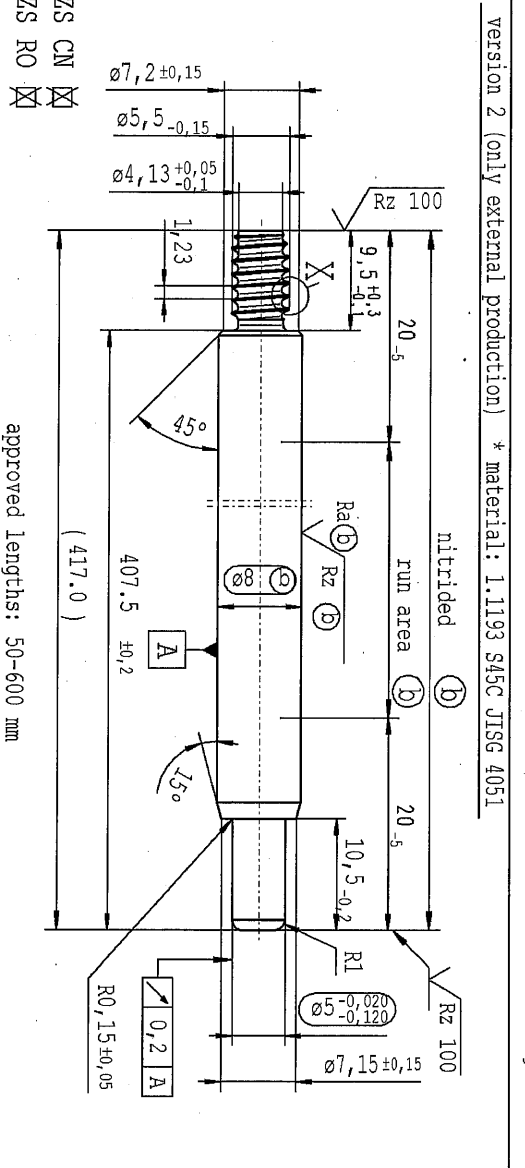
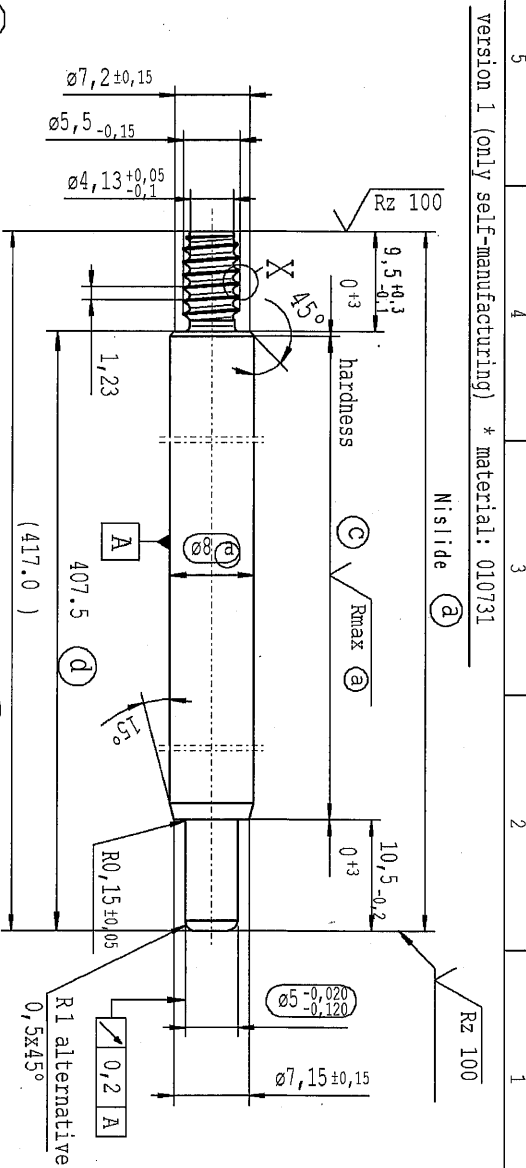
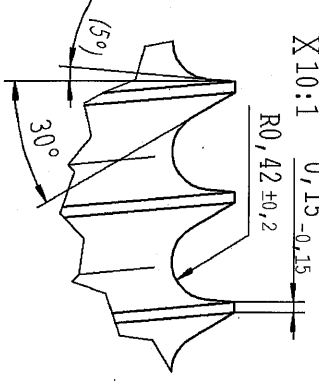
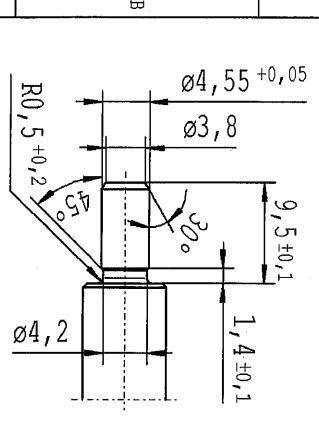
Material No.:

Material: *	STABILUS
Surface finish	DIN EN ISO 1302
Edge tolerances acc. to	DIN ISO 13715
Replaces:	
Environmental protection acc. to	STAB-Spec. 10005649
Document No.:	10151065
Material No.:	



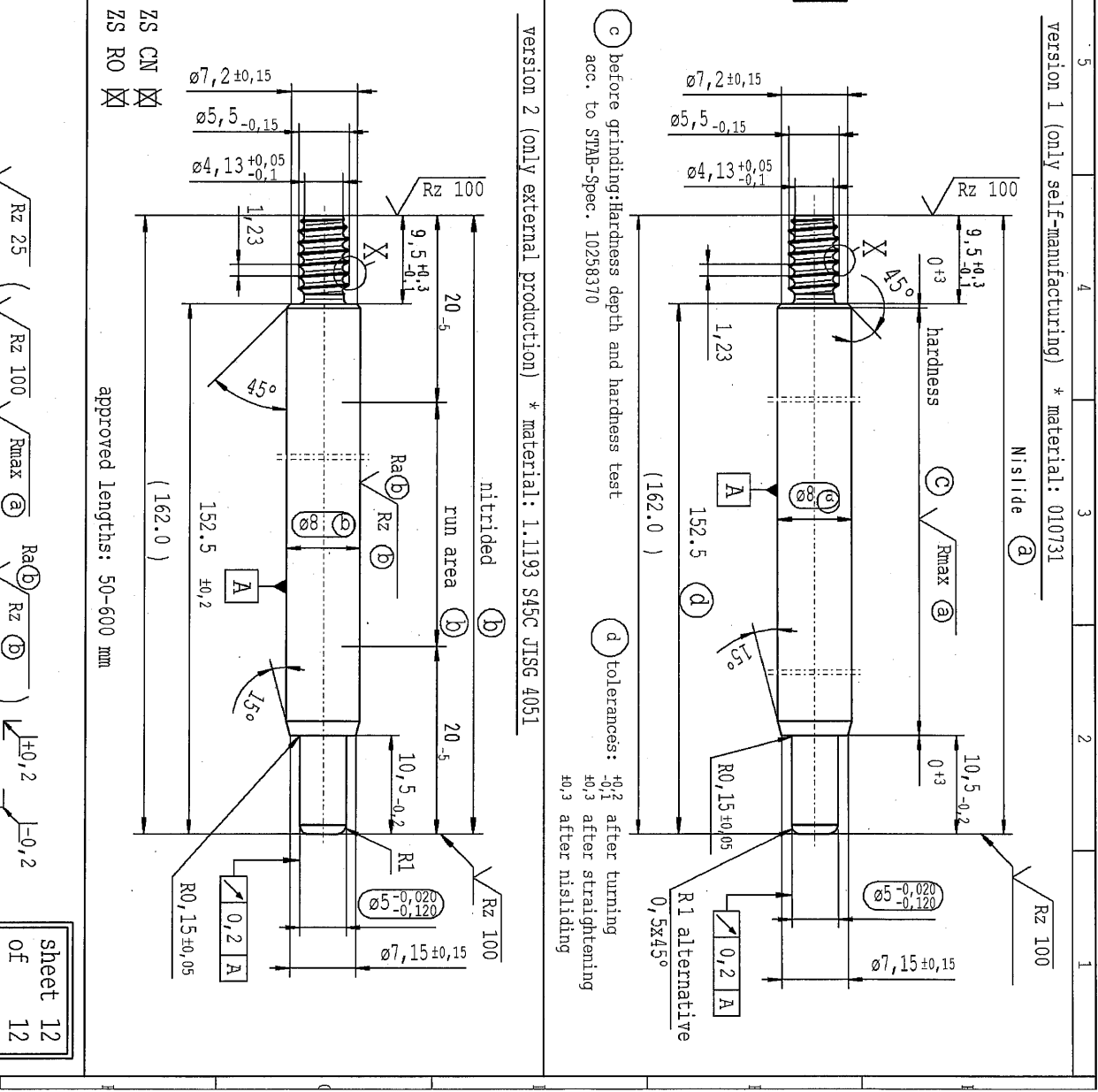
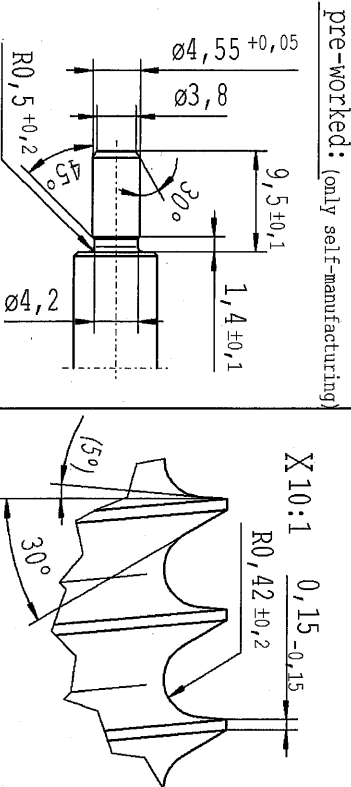
Sheet 16
of 20

supp	8	7	6	5	4	3	2	1
No.	material no.			version 1 (only self-manufacturing) * material: 010731			version 2 (only external production) * material: 1.1193 S45C JISG 4051	
processing and surface treatment acc. to STAB-Spec. 10006248 Tab. XVI optimized	10006248 Tab. X	10028959 Tab. I	overall length	length without endfitting stud	hardness	nitride (a)	run area (b)	Rz 100
version 1 (a)	version 1 (a)	version 2 (b)			(c) Rmax (a)	(d) tolerances: +0.2 after turning, -0.1 after straightening, +0.3 after nitriding		
163	616432	616432	123.0	113.5	10.5-0.2	0.3	10.5-0.2	0.5x45°
164	617627	617627	141.5	132.0	0.3		10.5-0.2	0.2
165	618105	618105	131.5	122.0	0.3		10.5-0.2	0.2
166	619061	619061	255.5	246.0	0.3		10.5-0.2	0.2
167	627187	627187	135.0	125.5	0.3		10.5-0.2	0.2
168	634835	634835	221.0	211.5	0.3		10.5-0.2	0.2
169	640810	640810	266.5	257.0	0.3		10.5-0.2	0.2
170	786600	786600	280.5	271.0	0.3		10.5-0.2	0.2
171	787317	787317	225.0	215.5	0.3		10.5-0.2	0.2
172	788034	788034	93.0	83.5	0.3		10.5-0.2	0.2
173	788512	788512	230.5	221.0	0.3		10.5-0.2	0.2
174	788990	788990	244.0	234.5	0.3		10.5-0.2	0.2
175	789946	789946	426.0	416.5	0.3		10.5-0.2	0.2
176	791141	791141	151.5	142.0	0.3		10.5-0.2	0.2
177	792814	792814	148.5	139.0	0.3		10.5-0.2	0.2
178	793770	793770	342.0	332.5	0.3		10.5-0.2	0.2
179	798550	798550	137.0	127.5	0.3		10.5-0.2	0.2
180	822689	822689	417.0	407.5	0.3		10.5-0.2	0.2
181	837985	837985	167.5	158.0	0.3		10.5-0.2	0.2



DE: X	EN: X	ES: X	IT: X	FR: X	RO: X	AIAG CQI-standards acc. to STAB-Spec. 10027692		
new						CAD created document handwritten changes not permitted		
old						ZS CN / ZS RO no technical change, no new first sample required		
Field						Tab. IV		
Date/Name						F 8		
Clg. No.						12.08.2021 Donat		
Rev.						10.03.2022 Hejn		
						707979		
						14		
Material: *						Material: *		
Surface finish: DIN EN ISO 1302						Surface finish: DIN EN ISO 1302		
Replaces:						Replaces:		
STABILUS						STABILUS		
PISTON ROD						PISTON ROD		
Environmental protection acc. to STAB-Spec. 10005649						Environmental protection acc. to STAB-Spec. 10005649		
All dimensions are in mm						All dimensions are in mm		
Marking of special characteristics according to STAB-Spec. 10270932						Marking of special characteristics according to STAB-Spec. 10270932		
Dimensions without tolerances						Dimensions without tolerances		
Scale: (Original DIN A3) 2:1						Scale: (Original DIN A3) 2:1		
We reserve all rights to this document, to any patents or patent applications, to the duplication, reproduction, distribution, and to the deletion, modification, and to the deletion of this document without the written consent of Stabilus.						We reserve all rights to this document, to any patents or patent applications, to the duplication, reproduction, distribution, and to the deletion, modification, and to the deletion of this document without the written consent of Stabilus.		
Document No.: 10151066						Document No.: 10151066		
Sheet 9 of 12						Sheet 9 of 12		
Date: 05.12.2007						Date: 05.12.2007		
Name: Höfer						Name: Höfer		
Date: 11.03.2022						Date: 11.03.2022		
Name: Klinkner						Name: Klinkner		

supp	8	7	6	5	4	3	2	1
No.	processing and surface treatment acc. to STAB-Spec. 10006248 Tab. XVI optimized	10006248 Tab. X	10028959 Tab. I	version 1 (only self-manufacturing)	* material: 010731			
version 1	version 1	version 1	version 2					
220	138672	138672	138672	453.0	443.5			
221	186233	186233	186233	138.0	128.5			
222	945776	945776	945776	318.0	308.5			
223	946732	946732	946732	162.0	152.5			
224	047137	047137	047137	165.0	155.5			
E	225	108799	108799	126.5	117.0			



DE: X	EN: X	ES: X	IT: X	PR: X	FR: X	RO: X
Tab XVI no technical change, no new first sample required						
old	Tab IV					
Field	F 8					
Date/Name	12.08.2021 Donat					
Chg. No.	699704					
Rev.	14					

ATAG CQI-standards acc. to STAB-Spec. 10027692		Material: *		Environmental protection acc. to STAB-Spec. 10005649	
CAD created document handwritten changes not permitted		ZS CN / ZS RO no technical change, no new first sample required		All dimensions are in mm	
ZS CN / ZS RO no technical change, no new first sample required		ZS RO X		Marking of special characteristics according to STAB-Spec. 10270932	
B/S		10.03.2022 HeIn		Dimensions without tolerances	
707919		14		Scale: 2:1	
STABILUS		PISTON ROD		Document No.: 10151066	
14		14		Date: 05.12.2007	
				Name: HeIn	
				Checked: 11.03.2022	
				Name: Klünder	

sheet 12 of 12