

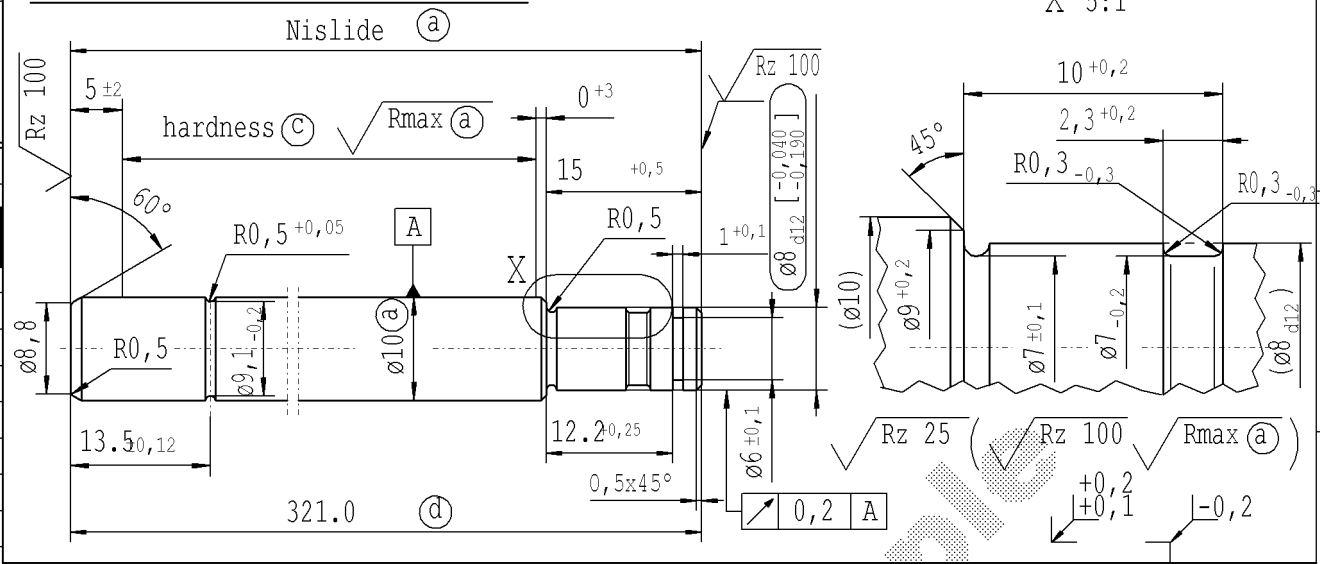
CONFIDENTIAL!
Intended for internal use only

supp No.	material no.		A	B	C	D
	surface treatment processing acc. to STAB-Spec. 10006248 table 5 Nislide light Version 1	surface treatment processing acc. to STAB-Spec. 10028959 table II Version 2	overall length	stud length end fitting side	groove clearance	stud length piston side
162	633367	633367	156.0	15	12.2	13.5
163	644839	644839	132.0	15	12.2	15
164	816202	816202	321.0	15	12.2	13.5
165	343939	343939	306.0	15	12.2	13.5
166	446470	446470	339.0	21	18.2	13.5
167	476823	476823	123.0	15	12.2	15
168	984937	984937	78.0	15	12.2	13.5
169	091795	091795	309.0	21	18.2	13.5
170	307852	307852	342.0	21	18.2	13.5
171	043997	043997	237.0	15	12.2	15
172	839150	839150	270.0	15	12.2	13.5
175	202455	202455	120.0	15	12.2	15
176	284671	284671	237.0	15	12.2	13.5
178	174735	174735	360.0	15	12.2	13.5
179	261493	261493	219.0	15	12.2	15
181	807608	807608	198.0	15	12.2	15
182	319093	319093	210.0	15	12.2	15
184	362113	362113	162.0	16.5	13.5	13.5
185	364264	364264	153.0	16.5	13.5	13.5
186	367610	367610	219.0	16.5	13.5	13.5
187	651781	651781	156.0	15	12.2	15

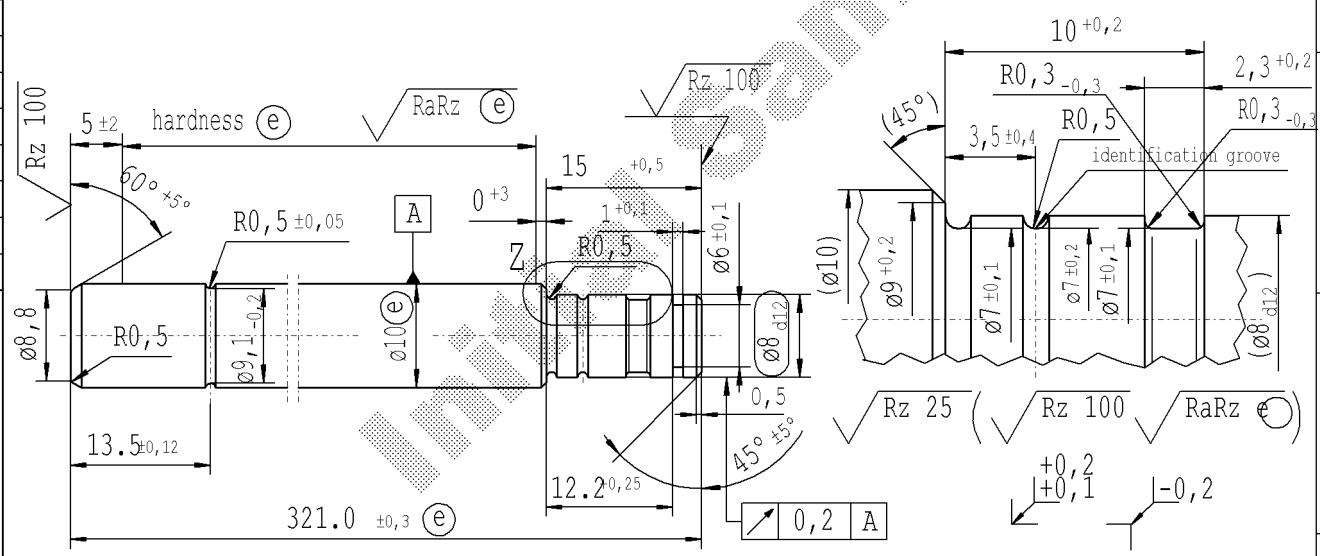
- ⊙ before grinding:
Hardness depth and hardness test acc. to STAB-Spec. 10258370
- ⊙ tolerance $\pm 0,1$ after turning
 $\pm 0,3$ after straightening
 $\pm 0,3$ after nisliding

sheet 6
of 8

Version 1 (only self-manufacturing)



Version 2 (only external manufacturing)



Environmental protection acc. to STAB-Spec. 10005649

DE: X	EN: X	ES:	IT:	PR:	FR:	RO: X	CRD created document handwritten changes not permitted	
new	Text	⊙	1.1193	3,5 ±0,4	9417RH + 4855RF	revised	⊙ = acc. STAB-Spec. 10258370	new format Internal/Supplier
old	---	S 45 C	3,5 ±0,2	Was on Doc.10004222	-	⊙ = RHT 0,4 ... 0,7 mm	-	Supplier drawing separately
Field	AB 7/8	Material	E2	Table	-	B 7-8	-	-
Date/Name	25.11.05 KeBelh.	25.10.06 KeB.	16.5.07 KeB.	28.03.2014 Höfer	14.05.2019 Jablonski	19.01.2021 Jablonski	-	-
Chg. No.	547031	548667	556680	612070	678694	694187	-	-
Rev.	3	4	5	6	7	8	-	-

Material:
Version 1: Mat.No. 010715
Version 2 : 1.1193
Edge tolerances acc. to DIN ISO 13715
Surface finish DIN EN ISO 1302
Replaces:
STABILUS

All dimensions are in mm
Scale: (Original DIN A3) **2:1**
Dimensions without tolerances DIN ISO 2768 mK
We reserve all rights to this document, to any patents or patent registrations related hereto, and to the duplication, retransmission by third parties and misc. use. Any use of this document is not permitted without the written consent of STABILUS.

Marking of special characteristics according to STAB-Spec. 10270932
Checked 19.01.2021 Banciu
Date 14.02.2005
Name KeBelheim
Document No.: **10028770**
Material No.:

PISTON ROD