

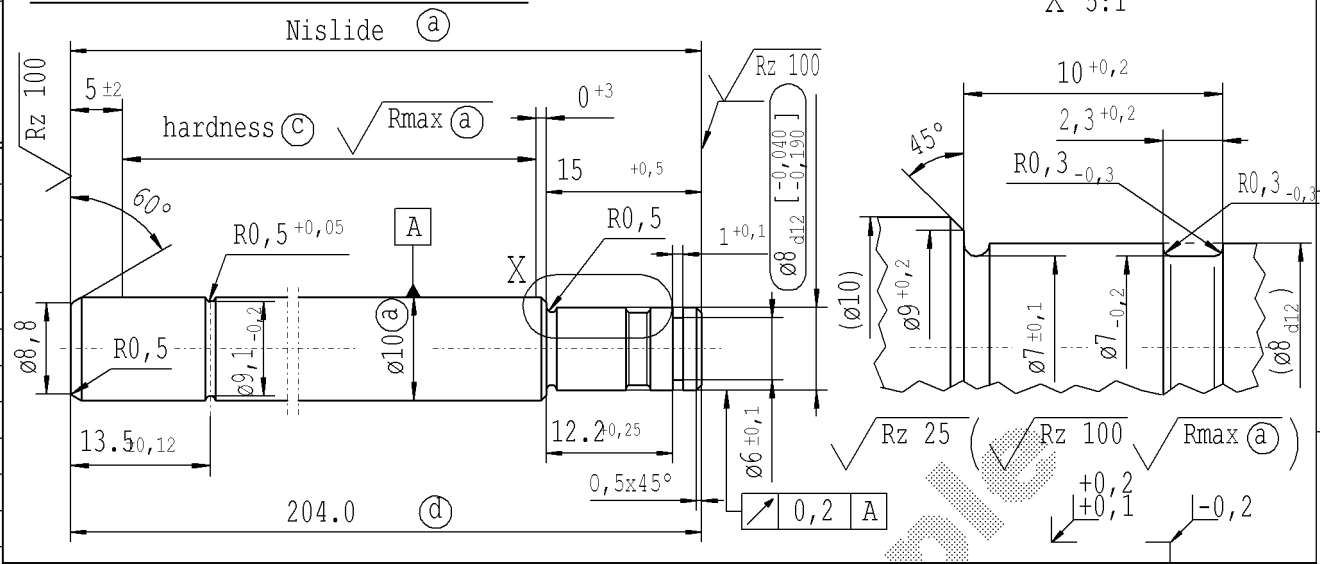
CONFIDENTIAL!
Intended for internal use only

supp No.	material no.		A	B	C	D
	surface treatment processing acc. to STAB-Spec. 10006248 table 5 Nislide light Version 1	surface treatment processing acc. to STAB-Spec. 10028959 table II Version 2	overall length	stud length end fitting side	groove clearance	stud length piston side
135	371178	371178	106.0	15	12.2	15
136	516251	516251	381.0	15	12.2	13.5
137	517685	517685	405.0	15	12.2	13.5
140	209378	209378	168.0	15	12.2	13.5
142	266738	266738	279.0	15	12.2	13.5
143	299959	299959	192.0	15	12.2	13.5
144	323620	323620	183.0	15	12.2	13.5
146	667541	667541	144.0	15	12.2	15
147	792538	792538	324.0	15	12.2	13.5
148	883358	883358	177.0	15	12.2	13.5
149	479688	479688	176.0	15	12.2	13.5
150	552822	552822	318.0	21	18.2	13.5
152	621893	621893	147.0	15	12.2	15
154	773897	773897	168.0	15	12.2	15
155	823848	823848	181.5	15	12.2	13.5
156	164448	164448	204.0	15	12.2	13.5
157	465827	465827	174.0	15	12.2	13.5
158	521753	521753	258.0	15	12.2	13.5
159	535137	535137	210.0	15	12.2	13.5
160	535615	535615	171.0	15	12.2	13.5
161	365209	365209	213.0	15	12.2	13.5

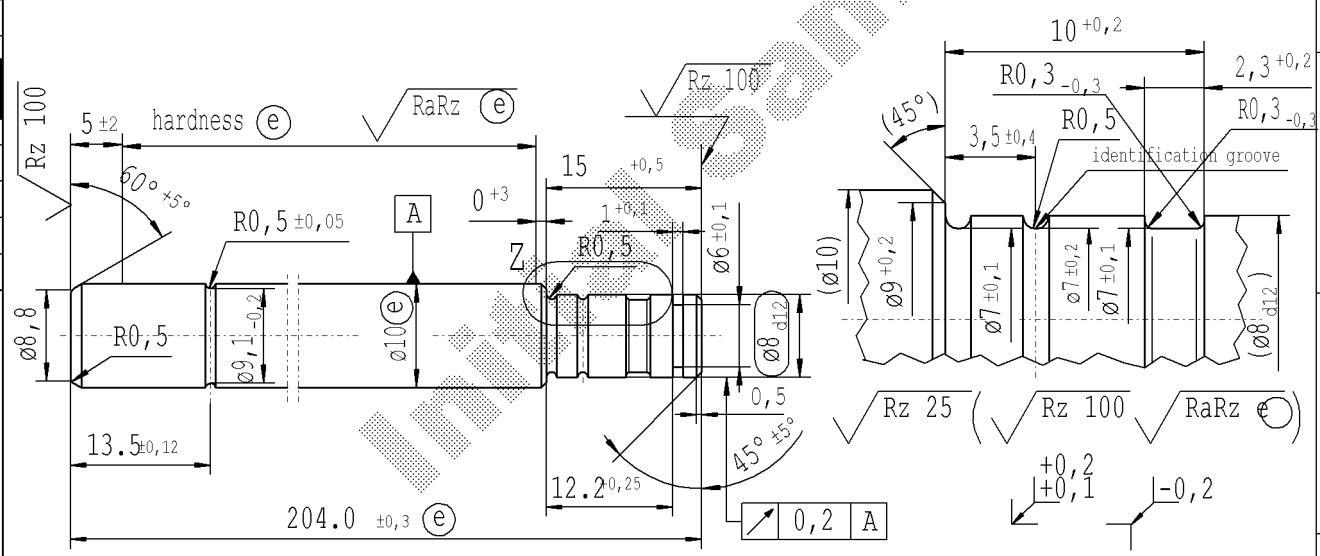
- ⊙ before grinding:
Hardness depth and hardness test acc. to STAB-Spec. 10258370
- ⊙ tolerance $\begin{matrix} +0,2 \\ -0,1 \end{matrix}$ after turning
 $\pm 0,3$ after straightening
 $\pm 0,3$ after nisliding

sheet 5
of 8

Version 1 (only self-manufacturing)



Version 2 (only external manufacturing)



Environmental protection acc. to STAB-Spec. 10005649

DE: X	EN: X	ES:	IT:	PR:	FR:	RO: X	CRD created document handwritten changes not permitted		Material:	All dimensions are in mm	Marking of special characteristics according to STAB-Spec. 10270932	Drawn by	Date	Name
new	Text	⊙	1.1193	3,5 ±0,4	9417RH + 4855RF	revised	⊙ = acc. STAB-Spec. 10258370	new format Internal/Supplier	Version 1: Mat.No. 010715	Scale: (Original DIN A3) 2:1	Dimensions without tolerances DIN ISO 2768 mK	Checked	14.02.2005	Keibelheim
old	---	S 45 C	3,5 ±0,2	Was on Doc.10004222	-	⊙ = RHT 0,4 ... 0,7 mm	-	Supplier drawing separately	Version 2 : 1.1193	We reserve all rights to this document, to any patents or patent registrations related hereto, and to the duplication, retransmission by third parties and misc. use. Any use of this document is not permitted without the written consent of STABILUS.		19.01.2021	Banciu	
Field	AB 7/8	Material	E2	Table	-	B 7-8	-	-	Edge tolerances acc. to DIN ISO 13715	Document No.:		10028770		
Date/Name	25.11.05 Keibelh.	25.10.06 KeB.	16.5.07 KeB.	28.03.2014 Höfer	14.05.2019 Jablonski	19.01.2021 Jablonski	-	-	Surface finish DIN EN ISO 1302	Material No.:		-		
Chg. No.	547031	548667	556680	612070	678694	694187	-	-	Replaces:	Material No.:		-		
Rev.	3	4	5	6	7	8	-	-	STABILUS	PISTON ROD		-		