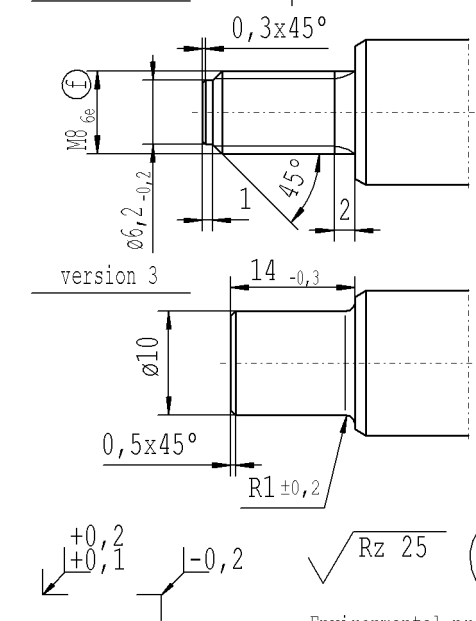
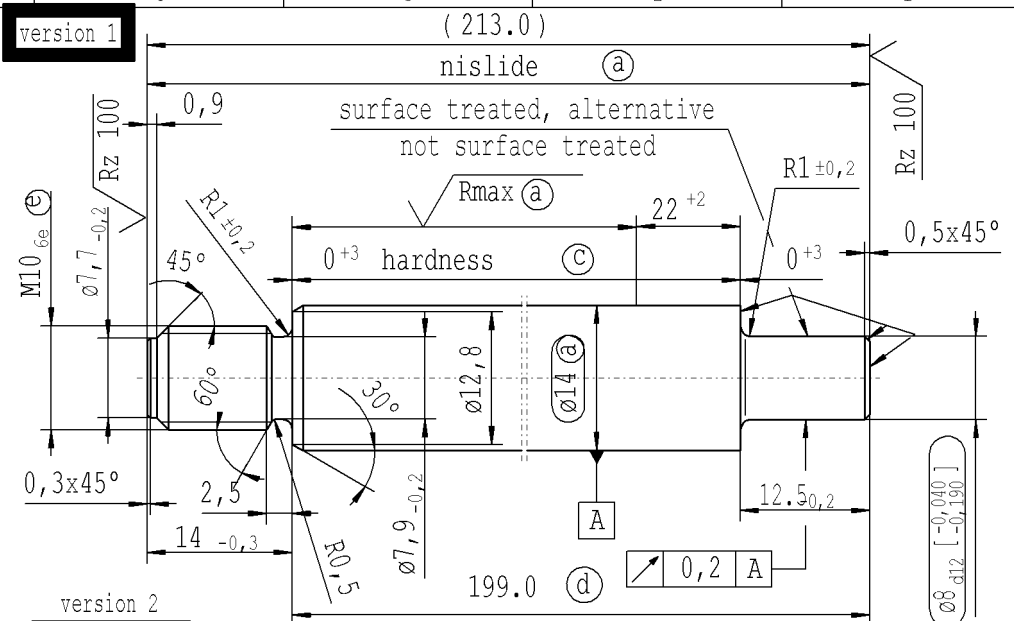


CONFIDENTIAL!
Intended for internal use only

supp No.	material no.					A	B	D	E	F	G	version
	table IV Nislide black	table VIII Nislide black	table V Nislide light	table X Nislide "G"	without surface							
1	9238BO					216.0	14	22	202.0	12.5	1	
3	9723BK				466533	264.0	14	10	250.0	12.5	1	
4	0976CT	9824EN			466533	264.0	14	22	250.0	12.5	1	
6	7558AY				467967	312.0	14	22	298.0	12.5	1	
7	3645BQ				467011	414.0	14	22	400.0	12.5	1	
8	9228AY				468684	363.0	14	22	349.0	12.5	1	
9	9232AV				467728	213.0	14	22	199.0	12.5	1	
10	3689CW					108.0	15	22	93.0	12.5	2	
11	3547CJ					162.0	14	22	148.0	12.5	1	
12	3567CY					462.0	14	22	448.0	12.5	1	
14	3576CX					564.0	14	22	550.0	12.5	1	
15	3585CW			812843		465.0	14	22	451.0	12.5	1	
16	3586CR					189.0	14	22	175.0	12.5	1	
17	3608CV					417.0	14	22	403.0	12.5	1	
18	3617CU			466772		315.0	14	22	301.0	12.5	1	
19	3781CB					264.0	10	22	254.0	12.5	1	
23	3664CF					186.0	10	22	176.0	12.5	2	
24	3677CL					168.0	14	22	154.0	12.5	1	
25	3834CJ					114.0	12	22	102.0	12.5	2	
27	3533CI					219.0	12	22	207.0	12.5	2	
28	3698CV					462.0	10	22	452.0	12.5	2	
29	3701CW			035867		165.0	14	22	151.0	12.5	1	
30	3772CC					150.0	10	22	140.0	12.5	2	
33	3847CP					231.0	14	22	217.0	12.5	1	
36	3868CZ					366.0	12	22	354.0	12.5	2	
37	3876CC					204.0	12	22	192.0	12.5	2	
38	3883CL					165.0	14	10	151.0	12.5	1	
39	3884CG			189772		366.0	14	22	352.0	12.5	1	
41	3907CF					561.0	12	10	549.0	12.5	2	
43	4234CQ					369.0	10	22	359.0	12.5	2	



Caution!
for twin-seal dim. D=10⁺²

- (a) piston rod processing per STAB-Spec. 10006248
 - (c) before grinding: Hardness depth and hardness test acc. to STAB-Spec. 10258370
 - (d) tolerance ^{+0,3} after turning
^{+0,3} after straightening
^{+0,3} after nisliding
 - (e) threaded stud pre-turned dimension $\varnothing 8,97_{-0,06}$
thread roll tolerance 6e
 - (f) threaded stud pre-turned dimension $\varnothing 7,14_{-0,06}$
thread roll tolerance 6e
- thread tolerances acc. to DIN ISO 965-3

sheet 1
of 10

Ident. Doc.: SN 8979BEme11.docum. 10/6/2020 - 1415

DE: X	EN: X	ES:	IT:	PR:	FR:	RO: X	CRD created document handwritten changes not permitted	
new	Version 1	surface treated ...	12,5	Nislide light	w/o surface	rom. version created	⊗ = acc. STAB-Spec. 10258370	
old	Version 2	-	14,5	-	-	-	⊙ = RHT 0,4 ... 0,7 mm	
Field	Pos.129	E-F/1-3	Pos.176F	Tab.	7A-F	-	C 1-2	
Date/Name	14.10.05 Höfer	29.05.2006 Schönberger	26.01.11 Hö	14.04.2011 Hö	27.04.2011 Höfer	20.04.2016 Jablonski	08.05.2019 Jablonski	
Chg. No.	546246	550631	586287	588157	588205	636361	678450	
Rev.	14	15	16	17	18	19	20	

Material: Material-no.010758	All dimensions are in mm	Identification of important characteristics	Drawn by 17.08.1993 Kirsch
Edge tolerances acc. to DIN ISO 13715	Scale: (Original DIN A3) 2:1	Dimensions without tolerances DIN ISO 2768 - mK	Checked by 08.05.2019 Milles
Surface finish DIN ISO 1302	We reserve all rights to this document, to any patents or patent registrations related hereto, and to the duplication, retransmission by third parties and misc. use. Any use of this document is not permitted without the written consent of STABILUS.		Document No.: 10004582
Replaces:	STABILUS		Material No.:
		PISTON ROD	