

The print-out is not subject to the modification service.

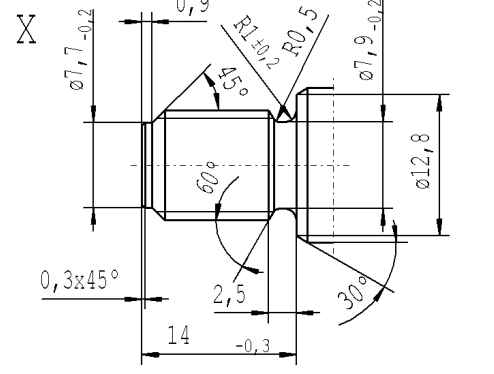
Intended for internal and supplier use

EN

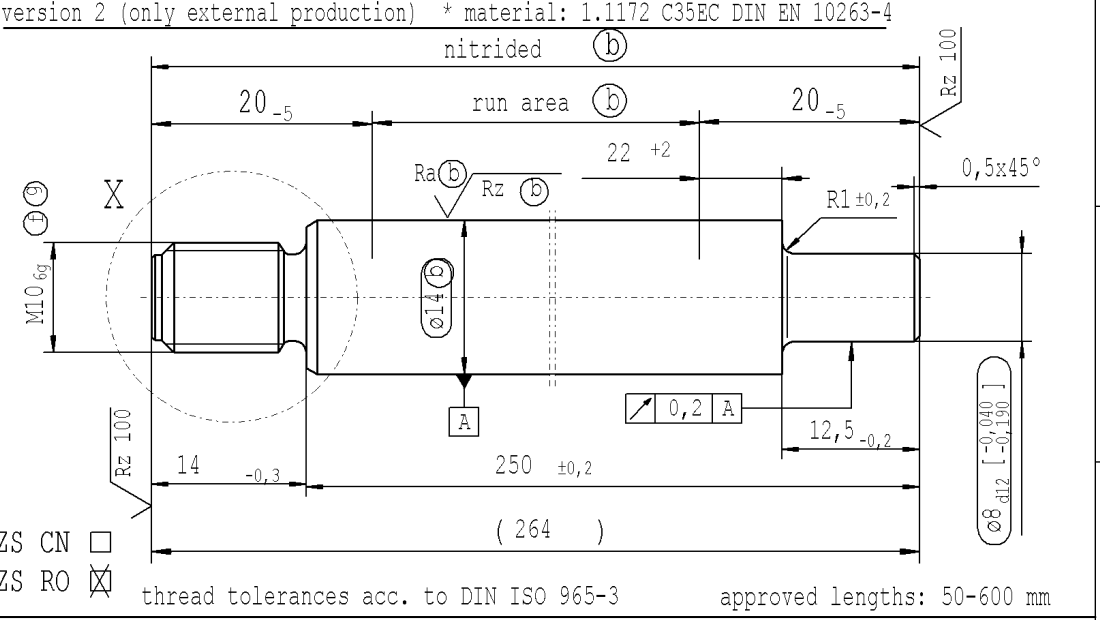
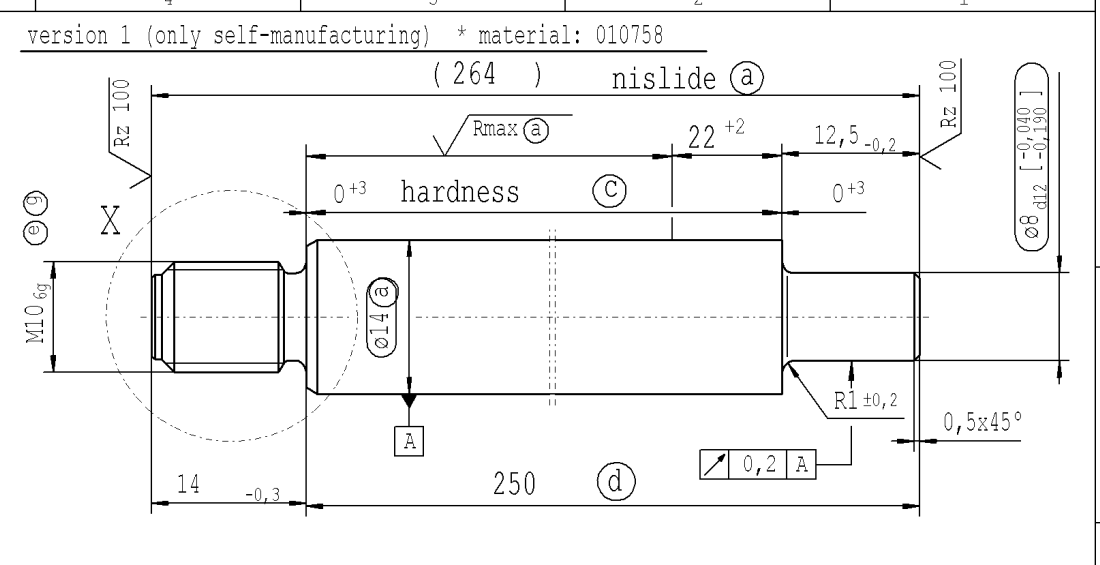
Ident. Doc. :
Brevell.datum: 1/9/2023 - 9:32

supp No.	material no.			A	B	D	E
	processing and surface treatment acc. to STAB-Spec.			overall length	thread length	length without	length without endfitting stud
	10006248 Tab. IV version 1	10006248 Tab. X version 1	10028959 Tab. I version 2			$\sqrt{R_{max}}$ (a) \sqrt{Ra} (b) Rz (c)	
1	226618		226618	264	14	22	250
2	242877		242877	213	12	22	201
3	407070		407070	402	20	22	382
4	407309		407309	666	10	10	656
5	728765		728765	162	14	22	148
6	729243		729243	564	14	22	550
7	735218		735218	462	14	22	448
8	741193		741193	312	14	22	298
9	741910		741910	210	14	10	196
10	742388		742388	465	14	22	451
11	744300		744300	153	14	22	139
12	745017		745017	124	14	22	110
13	745495		745495	315	14	22	301
14	748363		748363	591	14	22	577
15	748841		748841	363	14	22	349

- (c) before grinding: Hardness depth and hardness test acc. to STAB-Spec. 10258370
- (d) tolerances: $+0,3$ after turning
 $+0,3$ after straightening
 $+0,3$ after nisliding
- (e) threaded stud rough-turned dim. $\phi 8,97_{-0,06}$
thread roll tolerance 6e
thread tolerances acc. to DIN ISO 965-3
- (f) rough-turned dim. thread roll tolerance 6e
- (g) In the final condition, the actual profile of the thread must not exceed the maximum material limit for the tolerance zone position h at any point



Caution!
for twin-seal dim. $D=10^{+2}$



$\sqrt{Rz 25}$ ($\sqrt{Rz 100}$ $\sqrt{R_{max}}$ (a) Ra (b) Rz (b)) $\begin{matrix} +0,2 \\ -0,1 \end{matrix}$ $\begin{matrix} +0,2 \\ -0,2 \end{matrix}$

sheet 1 of 7

AIAG CQI-standards acc. to STAB-Spec. 10027692				Environmental protection acc. to STAB-Spec. 10005649			
DE: X	EN: X	ES:	IT:	PR:	FR:	RO: X	CAD created document handwritten changes not permitted
new	(c) = acc. STAB-Spec. 10258370	new Format Internal/Supplier		1.1172 C35EC DIN EN 10263-4		ZS CN / ZS RO M10 6g (f) (g)	
old	(c) = RHT 0,4 ... 0,7 mm	Supplier drawing separately		1.1193 S45C JISG 4051		-	
Field	C 4-5		-		D/1-2		B-F/4-5 B/7-8
Date/Name	15.05.2019 Donat		25.06.2020 Höfer		15.02.2022 Hein		25.04.2022 Hein
Chg. No.	678703		689534		706933		709668
Rev.	5		6		7		8
STABILUS				PISTON ROD			
Material: *				All dimensions are in mm		Marking of special characteristics according to STAB-Spec. 10270932	
Edge tolerances acc. to DIN ISO 13715				Scale: (Original DIN A3) 2:1		Dimensions without tolerances DIN ISO 2768 mK	
Surface finish DIN EN ISO 1302				We reserve all rights to this document, to any patents or patent registrations related hereto, and to the duplication, retransmission by third parties and misc. use. Any use of this document is not permitted without the written consent of STABILUS.		Date Name 02.01.2008 Höfer	
Replaces:				Document No.: 10151648		Checked 25.04.2022 Klinkner	
				Material No.:			