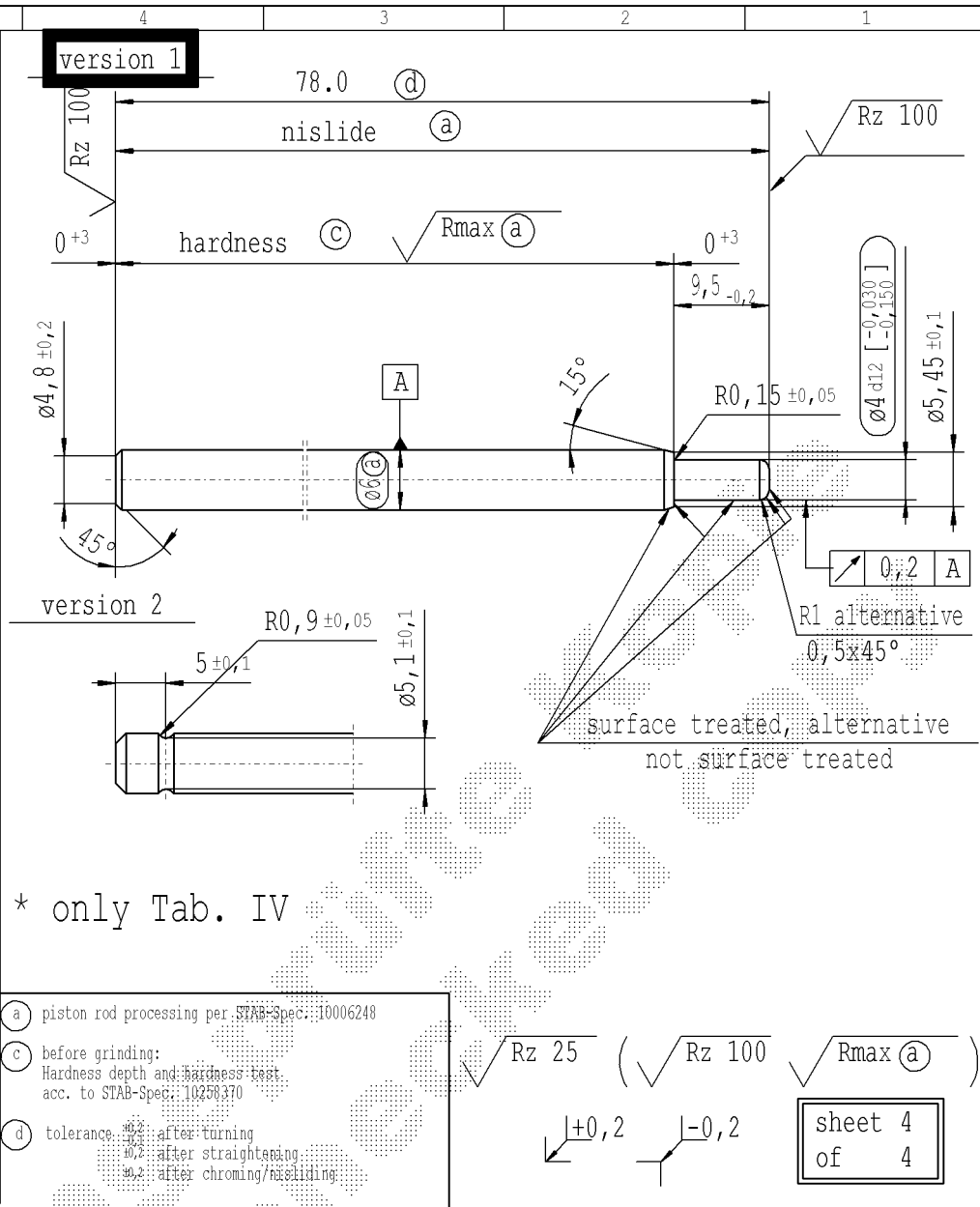


The print-out is not subject to the modification service.

CONFIDENTIAL! Intended for internal and supplier use

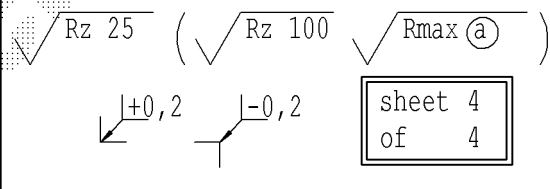
Ident. Doc.: SN 53.11=067402=mm. 14/02/2023 - 8:47

F	supp No.	material no.					A	B
		table IV Nislid black	table XVI optimized Nislid black	table VIII Nislid black	table V Nislid light	only STUS/STMX table X Nislid "G"		
	122			254064			186.0	1
	123	512423				512423	97.0	1
	124					544210	138.0	1
	125					600375	135.0	1
	126					736127	136.0	1
E	127	976562				976562	336.0	1
	128					848699	87.0	1
	129	335090				335090	92.0	1
	130	989235				989235	81.0	2
	132					753344	79.0	1
	134					960318	111.0	1
D	136	718936				718936	159.0	2
	137	393898				393898	231.0	1
	138	887435				887435	85.0	1
	139	393187				393187	63.0	2
	140	762445				762445	237.0	1
	141	798535				798535	114.0	2
	142	342048				342048	84.0	2
	143	392238				392238	115.0	1
	144	473020				473020	78.0	1
	145	402279				402279	105.0	2
	146	448407				448407	149.0	2
	147	188616				188616	174.0	1
	148	690277				690277	135.0	2
	149			448891			117.0	2
B	150			450564			75.0	2
	151			451281			168.0	2
	152	413765				413765	75.5	1
	153		039493			039493	105.0	2



* only Tab. IV

- (a) piston rod processing per STAB-Spec. 10006248
- (c) before grinding:
Hardness depth and hardness test
acc. to STAB-Spec. 10258370
- (d) tolerance: 0,2 after turning
0,2 after straightening
0,2 after chroming/nisliding



sheet 4
of 4

AIAG CQI-standards acc. to STAB-Spec. 10027692										
DE: X	EN: X	ES:	IT:	PR:	FR:	RO: X	CAD created document handwritten changes not permitted			Material:
new	chrome DCK 10214402					RO: X	© = acc. STAB-Spec. 10258370	Table V	Table XVI	mat.no.: 010707
old	-						© = RHT 0,4 ... 0,7 mm	-	-	Edge tolerances acc. to DIN ISO 13715
Field	Pos 11,37,40,44						B 5-6	-	-	Surface finish: DIN EN ISO 1302
Date/Name	12.08.2014 Höfer	15.08.2016 Höfer	02.05.2019 Donat	19.07.2021 Donat	02.08.2023 Donat					Regulärer:
Chg. No.	615927	642682	678231	699518	724795					STABILUS
Rev.	2B	29	30	31	32					

Environmental protection acc. to STAB-Spec. 10005649		
All dimensions are in mm	Marking of special characteristics according to STAB-Spec. 10270932	Date Name
Scale: (Original DIN A3) 2:1	Dimensions without tolerances DIN ISO 2768 mK	Drawn by 20.05.1992 Kirsch
We reserve all rights to this document, to any patents or patent registrations related hereto, and to the duplication, retransmission by third parties and misc. use. Any use of this document is not permitted without the written consent of STABILUS.		Checked 02.08.2023 Milles
		Document No.: 10003697
		Material No.:
PISTON ROD		