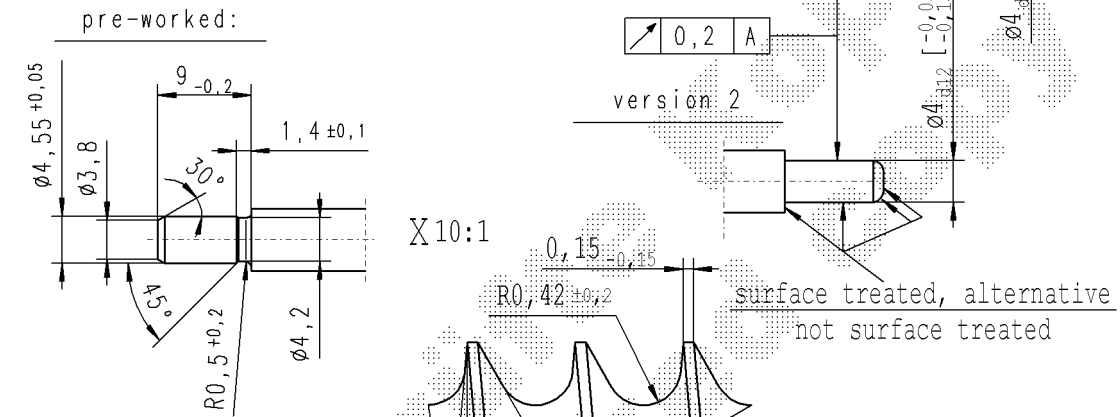
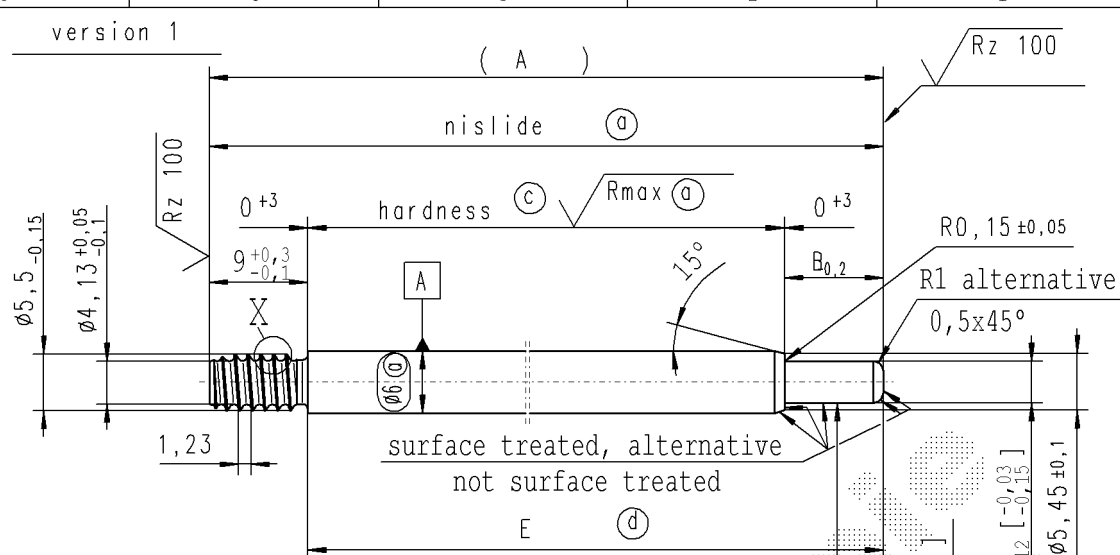
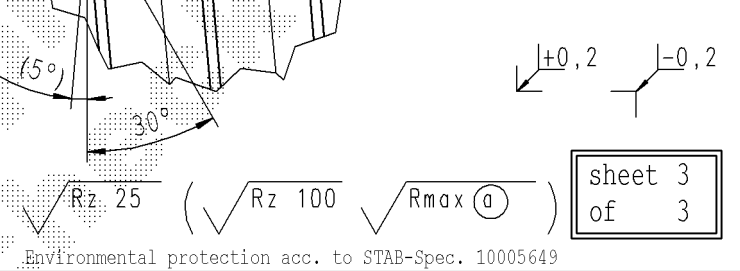


CONFIDENTIAL!
Intended for internal use only

supp. No.	material no.				A overall length	B stud length piston side	E length without endfitting stud	F version
	table IV nislid black	table VIII Nislid black	only STUS/STMX table X Nislid 'G'	without surface				
155	0932US		0932US	836038	205.0	9.5	196.0	1
156	6653UB		6653UB		144.5	9.5	135.5	1
157	3497VS		3497VS	441435	224.5	9.5	215.5	1
159	7296ZQ		7296ZQ	255731	171.0	9.5	162.0	1
160	606109		606109	836277	225.0	9.5	216.0	1
178	818597		818597		68.0	9.5	59.0	1
179	064328		064328		84.0	9.5	75.0	1
180	624070		624070		93.0	9.5	84.0	1
181	997639		997639		90.0	9.5	81.0	1



- Ⓐ piston rod processing per STAB-Spec. 10006248
- Ⓒ before grinding:
Hardness depth and hardness test acc. to STAB-Spec. 10258370
- Ⓓ tolerance $\begin{matrix} +0,2 \\ -0,1 \end{matrix}$ after turning
 $\begin{matrix} +0,2 \\ -0,2 \end{matrix}$ after straightening
 $\begin{matrix} +0,2 \\ -0,2 \end{matrix}$ after nisliding



sheet 3
of 3

Environmental protection acc. to STAB-Spec. 10005649

Ident. Doc.: SN 1817H@me11.docx: 15/02/2023 - 7:35

DE: X	EN: X	ES:	IT:	PR:	FR:	RO: X	CAD created document handwritten changes not permitted		Material:	All dimensions are in mm	Marking of special characteristics according to STAB-Spec. 10270932	Drawn by	Date	Name
new	RO: X		detail X reworked 9 $\begin{matrix} +0,3 \\ -0,1 \end{matrix}$	Ⓒ = acc. STAB-Spec. 10258370	(5°)			mat. no. 010707	Scale: (Original DIN A3) 2:1	Dimensions without tolerances DIN ISO 2768-mK	Checked	07.06.1996	Keitelheim	
old	-		-	Ⓒ = RHT 0,4 ... 0,7 mm	5°			Edge tolerances acc. to DIN ISO 13715				30.03.2021	Klinkner	
Field			B-C/1-3 E/4		B/3	B 5-6		Surface finish DIN EN ISO 1302	We reserve all rights to this document, to any patents or patent registrations related hereto, and to the duplication, retransmission by third parties and misc. use. Any use of this document is not permitted without the written consent of STABILUS.					
Date/Name	15.11.2016 Hofer	08.04.2019 Hein	17.04.2019 Donat	30.03.2021 Hein				Registers:	Document No.: 10000922					
Chg. No.	647730	677381	677953	696923				STABILUS	Material No.:					
Rev.	14	15	16	17				PISTON ROD						