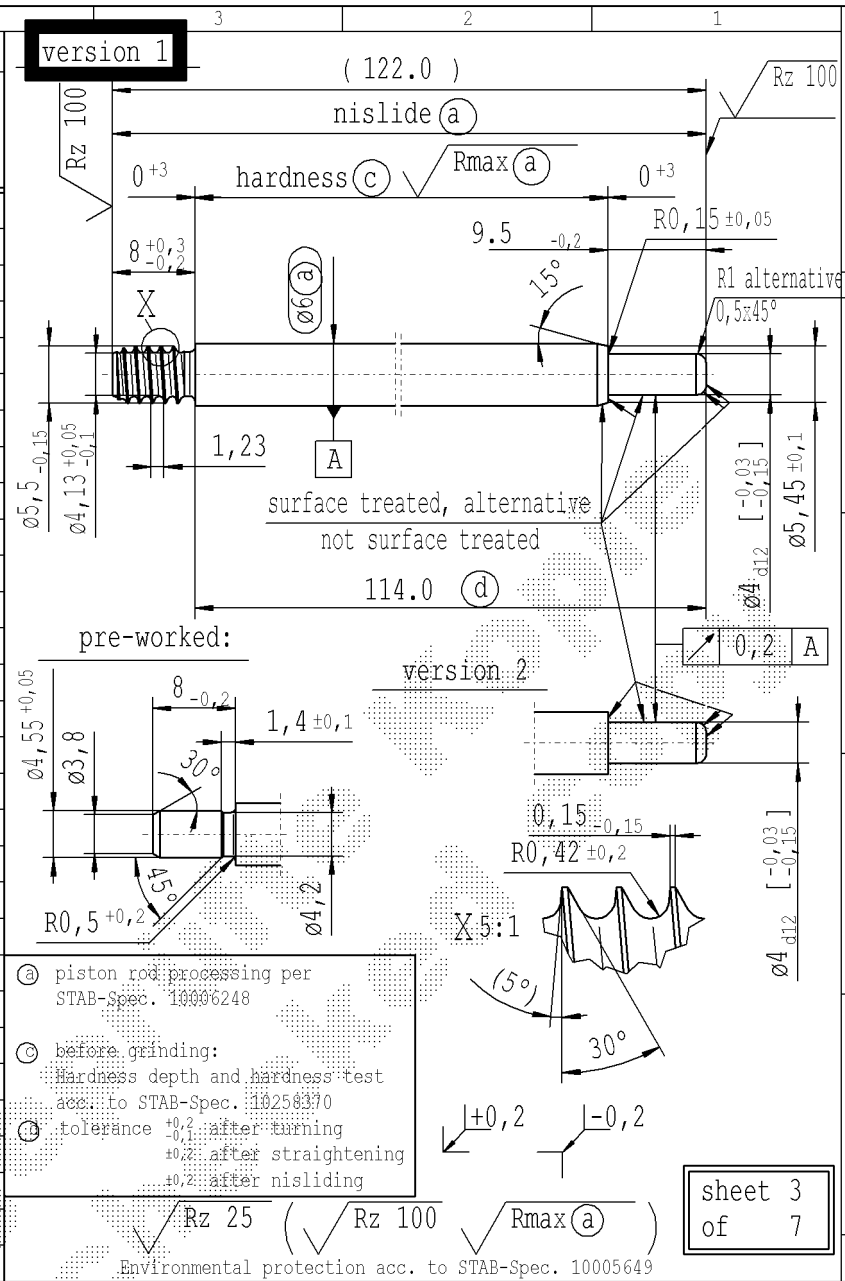


CONFIDENTIAL!
Intended for internal use only

F	supp. No.	material no.				A	B	C	D
		surface treatment processing acc. STAB-Spec. 10006248							
		table IV nislide black	table V Nislide light	table VIII nislide black polished	only STUS/STMX table X Nislide 'G'				
70	2883QR			2883QR	439045	154.0	9.5	146.0	1
71	2908QG	2326YO		2908QG		134.5	9.5	126.5	1
72	5791RA			5791RA	452190	135.0	9.5	127.0	1
74	5286QU			5286QU		76.5	9.5	68.5	1
75	5288QK			5288QK		58.5	9.5	50.5	1
E	76	5291QM		5291QM	231595	97.5	9.5	89.5	1
	77	5297QJ		5297QJ	882631	187.5	9.5	179.5	1
	78	5303QW		5303QW	436416	118.5	9.5	110.5	1
	79	6049QI		6049QI		82.5	9.5	74.5	1
	80		7054QT			132.0	9.5	124.0	1
	81	8792QC		8792QC	438567	149.0	9.5	141.0	1
	82	8967QI		8967QI		291.0	9.5	283.0	1
D	84	2276RT		2276RT		240.0	9.5	232.0	1
	85	5448RQ		5448RQ	246888	222.0	9.5	214.0	1
	86	5461RM		5461RM	824073	128.0	9.5	120.0	1
	87	7864RH	9128WY	7864RH	173279	165	9.5	157.0	1
	88	7902RT		7902RT	438089	246.0	9.5	238.0	1
	90	8001RZ		8068RI	8001RZ	144.0	9.5	136.0	1
C	91	8036RJ	0361SB	8036RJ	255492	129.0	9.5	121.0	1
	92	6138RI		6138RI	834350	158.0	9.5	150.0	1
	94	6173RJ		6173RJ		248.5	9.5	240.5	1
	95	6195RO		6195RO	437133	200.0	9.5	192.0	1
	96	6205RH		6205RH	435938	104.0	9.5	96.0	1
	97	6277RJ		6277RJ	437372	100.5	9.5	92.5	1
	98	1016ST	7173TU	1016ST		84.0	9.5	76.0	1
B	99	5506RQ		5506RQ	436655	139.5	9.5	131.5	1
	101	1141ST		1141ST	433787	205.0	9.5	197.0	1
	102	9265RB		9265RB		79.5	9.5	71.5	1
	103	1433SV		1433SV	107793	122.0	9.5	114.0	1
A	104	1437SB		1437SB	434265	190.5	9.5	182.5	1



(a) piston rod processing per STAB-Spec. 10006248

(c) before grinding: Hardness depth and hardness test acc. to STAB-Spec. 10258370

(d) tolerance $\pm 0,2$ after turning $\pm 0,2$ after straightening $\pm 0,2$ after nislanding

Ident. Doc.:
Errecl1.docum. 22/03/2023 - 10:28

DE: X	EN: X	ES:	IT:	PR:	FR:	RO: X	CAD created document handwritten changes not permitted		
new	position of angle 5° corrected 8 ^{+0,3} _{-0,2}				© = acc. STAB-Spec. 10258370		(5°)		
old	wrong position of angle 5°				© = RHT 0,4 ... 0,7 mm		5°		
Field	B-C/1-2 F/3					B 2-4	C/2		
Date/Name	08.04.2019 Hein				14.05.2019 Jablonski		30.03.2021 Hein		
Chg. No.	677381				678671		696923		
Rev.	10				11		12		

Material:	All dimensions are in mm	Marking of special characteristics according to STAB-Spec. 10270932	Date	Name
mat.No.: 0310707	Scale: (Original DIN A3) 2:1	Dimensions without tolerances DIN ISO 2768-mK	03.05.2001	SGB
Edge tolerances acc. to DIN ISO 13715			30.03.2021	Klinkner
Surface finish acc. to DIN EN ISO 1302				
Regulations:	We reserve all rights to this document, to any patents or patent registrations related hereto, and to the duplication, retransmission by third parties and misc. use. Any use of this document is not permitted without the written consent of STABILUS.			
			Document No.:	10016564
			Material No.:	

STABILUS

PISTON ROD