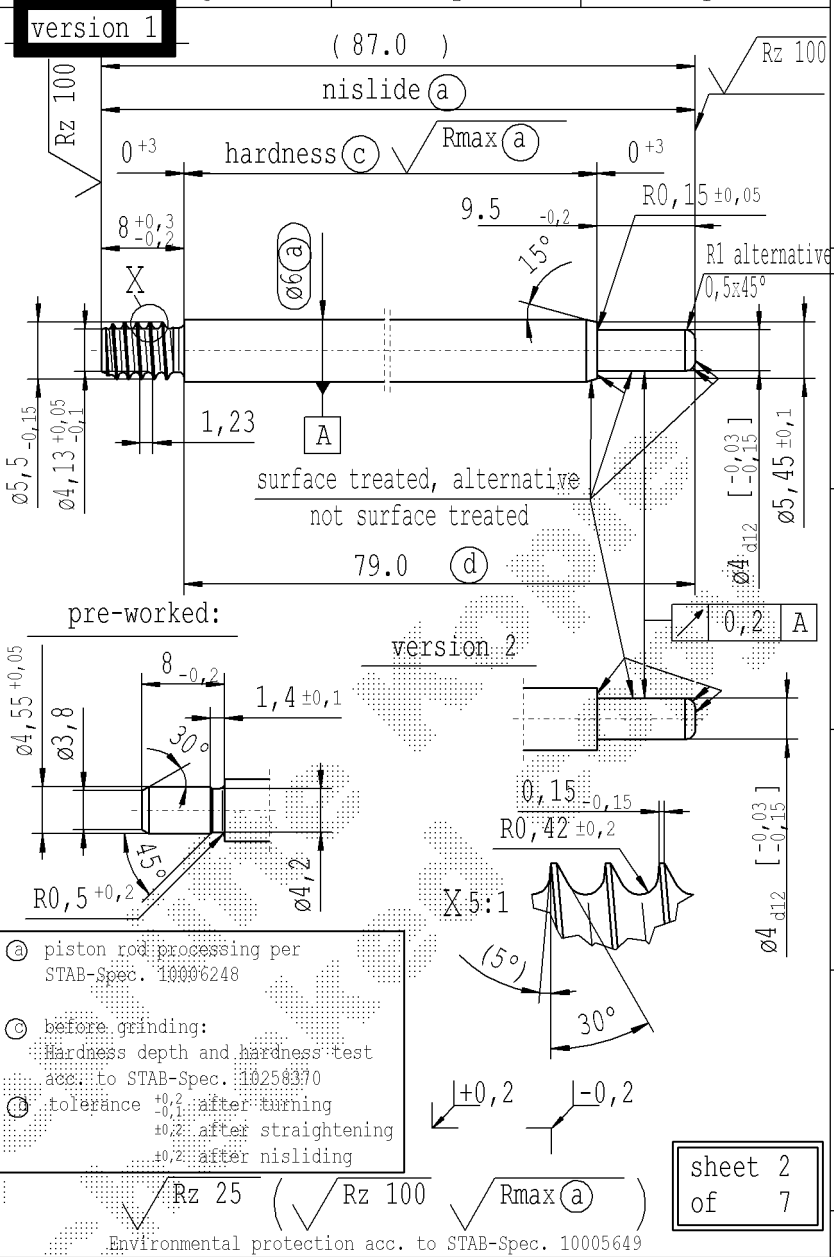


CONFIDENTIAL!
Intended for internal use only

supp. No.	material no.					A	B	C	D
	surface treatment processing acc. STAB-Spec. 10006248					overall length	stud length piston side	length without end-fitting stud	version
	table IV nislide black	table V Nislide light	table VIII nislide black polished	only STUS/STMX table X Nislide 'G'	without surface				
34	2303QT			2303QT	520544	168.0	9.5	160.0	1
35	2305QJ			2305QJ		101.0	9.5	93.0	1
36	2309QQ			2309QQ	434982	183.0	9.5	175.0	1
37	2315QD		2521QD	2315QD		119.0	9.5	111.0	1
38	2322QM			2322QM		254.5	9.5	246.5	1
39	2324QC		2737QH	2324QC		161.5	9.5	153.5	1
40	2345QM			2345QM	435221	161.0	9.5	153.0	1
41	2356QB			2356QB	217016	186.0	9.5	178.0	1
42	2358QS		026500	2358QS	284172	138.0	9.5	130.0	1
43	2368QM			2368QM	260750	123.0	9.5	115.0	1
44	2377QL			2377QL		143.5	9.5	135.5	1
45	2379QB			2379QB	435699	156.0	9.5	148.0	1
46	2382QD			2382QD		119.5	8.5	111.5	1
48	2391QC	032121		2391QC		128.5	9.5	120.5	1
49	2398QV			2398QV		150.0	8.5	142.0	1
50	2401QW			2401QW		222.0	10.5	214.0	1
53	2424QW	1552TD	7986TY	2424QW		87.0	9.5	79.0	1
54	2426QM			2426QM	864942	153.0	9.5	145.0	1
55	2442QU	2581QV		2442QU		125.5	9.5	117.5	1
56	2496QY			2496QY		145.0	9.5	137.0	1
57	2499QJ		1372RN	2499QJ		219.0	9.5	211.0	1
58	2511QJ			2511QJ		111.0	9.5	103.0	1
59	2518QB	8759UC		2518QB		108.0	9.5	100.0	1
62	2534QJ			2534QJ		157.0	9.5	149.0	1
63	2551QM			2551QM		86.5	9.5	78.5	1
65	2564QS			2564QS		83.5	8.5	75.5	1
66		2569QU				98.5	9.5	90.5	1
67		2572QW				182.5	9.5	174.5	1
68	3207VF		2738QC	3207VF	436177	255.0	9.5	247.0	1
69	2853QI			2853QI		112.0	9.5	104.0	1



(a) piston rod processing per STAB-Spec. 10006248

(c) before grinding: Hardness depth and hardness test acc. to STAB-Spec. 10258370

(d) tolerance $\pm 0,2$ after turning $\pm 0,2$ after straightening $\pm 0,2$ after nislide

DE: X	EN: X	ES:	IT:	PR:	FR:	RO: X	CAD created document handwritten changes not permitted		
new	position of angle 5° corrected 8 ^{+0,3} _{-0,2}				⊙ = acc. STAB-Spec. 10258370		(5°)		
old	wrong position of angle 5°				⊙ = RHT 0,4 ... 0,7 mm		5°		
Field	B-C/1-2 F/3					B 2-4	C/2		
Date/Name	08.04.2019 Hein				14.05.2019 Jablonski		30.03.2021 Hein		
Chg. No.	677381				678671		696923		
Rev.	10				11		12		

Material: mat.No.: 0310707

All dimensions are in mm

Scale: (Original DIN A3) 2:1

Marking of special characteristics according to STAB-Spec. 10270932

Dimensions without tolerances DIN ISO 2768-mK

Edge tolerances acc. to DIN ISO 13715

Surface finish acc. to DIN EN ISO 1302

Regulations:

We reserve all rights to this document, to any patents or patent registrations related hereto, and to the duplication, retransmission by third parties and misc. use. Any use of this document is not permitted without the written consent of STABILUS.

Document No.: 10016564

Material No.:

STABILUS PISTON ROD

sheet 2 of 7