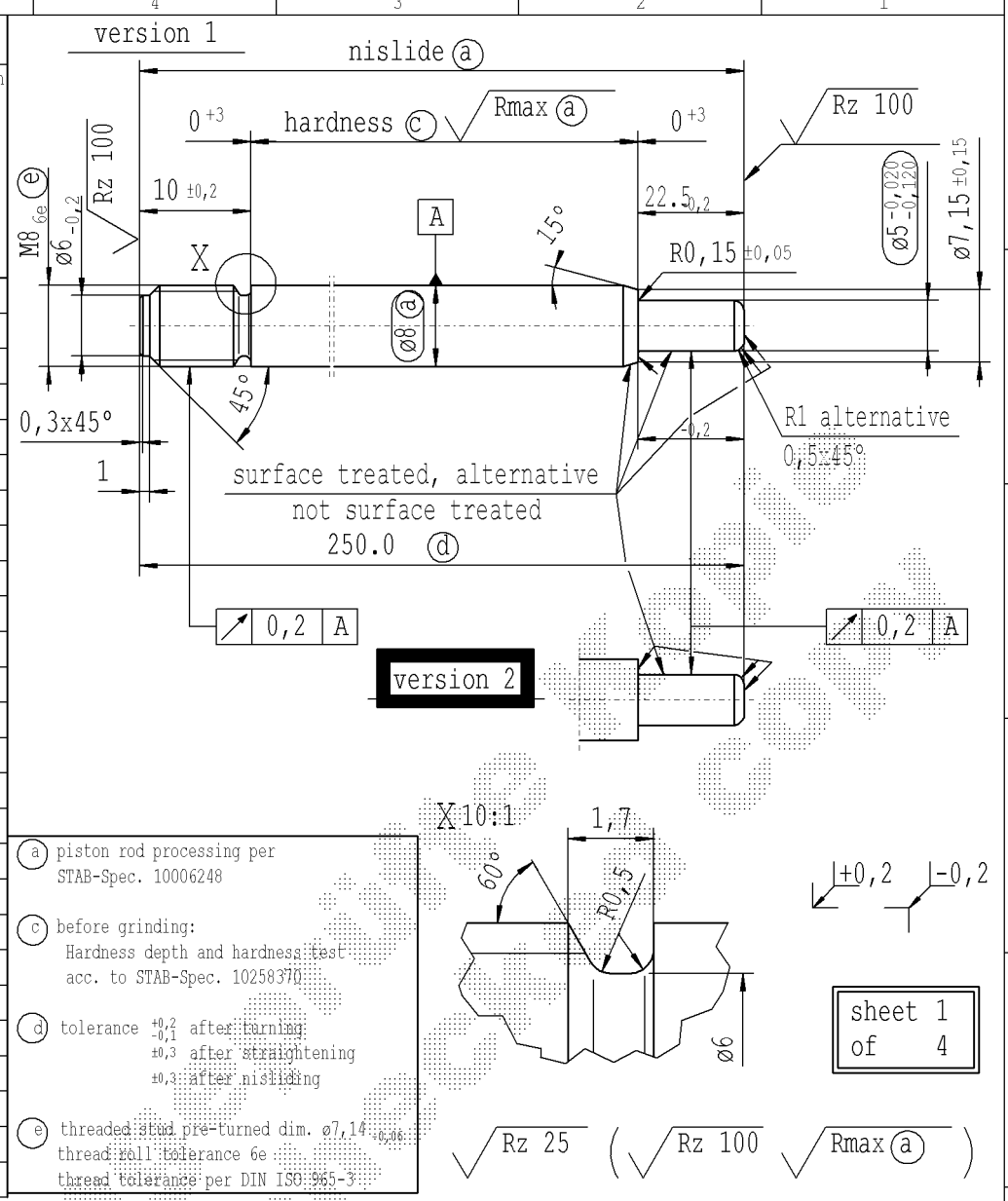


Ident. Doc.: SN 53.11-006497-Rev. 16/02/2023 - 8:27

Intended for internal and supplier use

The print-out is not subject to the modification service.

supp. No.	material no.				KOST without surface treatment only for STUS / STMX	overall length	A	B	C	D	version
	table IV Nislid black	table X Nislid "G"	table VIII Nislid black polished	table XVI Nislid black							
	for STUS / STMX table IV acc. STAB-Spec. 10210309										
2	295469	295469			240.0	11		10.5	1		
9	5686MI			5686MI	418.5	11		10.5	1		
12	1793NL			1793NL	364.0	11		10.5	1		
15	3109SO			3109SO	150.0	13		10.5	1		
16	2237TD			2237TD	207.0	7		10.5	1		
17			9078TN		309.0	11		10.5	1		
18	9445TS	9445TS			153.0	16		10.5	1		
20	0383VV	0383VV			246.0	10		10.5	1		
21	0434VM	0434VM			240.0	10		10.5	1		
23			3406XP		177.0	11		10.5	1		
25	3981XL	3981XL			220.0	10		10.5	1		
26	2031YA			2031YA	237.0	10		10.5	1		
29	1289ZB	1289ZB			149.0	10		10.5	1		
30		3462ZS			150.0	10		10.5	1		
31	4819ZE	4819ZE			270.0	11		10.5	1		
32	9979ZC	9979ZC			188.0	10		10.5	1		
33		000640			157.0	11		10.5	1		
34	006509	006509			186.0	10		10.5	1		
35	004389	004389			225.0	10		10.5	1		
37	022603			022603	284.0	10		10.5	1		
40			479229		250.5	11		10.5	1		
41	400522	400522			250.0	10		22.5	2		
42	967267	967267			242.0	10		10.5	1		
43		986387			376.5	11		23.5	2		
44	990928			990928	279.0	11		10.5	1		
45	547072	547072		494015	297.0	10		22.5	2		



DE: X						EN: X						ES:						IT:						PR:						FR:						RO: X											
new												Tab.XVI												Creation of romanian drawing												9						© = acc. STAB-Spec. 10258370					
old												-												-												10						© = RHT 0,4 .... 0,7 mm					
Field												-												-												Pos.66 B						B 4					
Date/Name						16.11.2015 Höfer						17.03.2016 YaMueller						29.04.2016 Höfer						07.05.2019 Jablonski																							
Chg. No.						630705						635493						637297						678352																							
Rev.						24						25						26						27																							

Material: mat. no.: 010731

Edge tolerances acc. to DIN ISO 13715

Surface finish: DIN EN ISO 1302

Regulärer: SN 53.11-08/97

**STABILUS**

Environmental protection acc. to STAB-Spec. 10005649

All dimensions are in mm

Identification of important characteristics

Scale: (Original DIN A3) 2:1

Dimensions without tolerances DIN ISO 2768-mK

We reserve all rights to this document, to any patents or patent registrations related hereto, and to the duplication, retransmission by third parties and misc. use. Any use of this document is not permitted without the written consent of STABILUS.

Document No.: 10003803

Material No.:

**PISTON ROD**

sheet 1 of 4