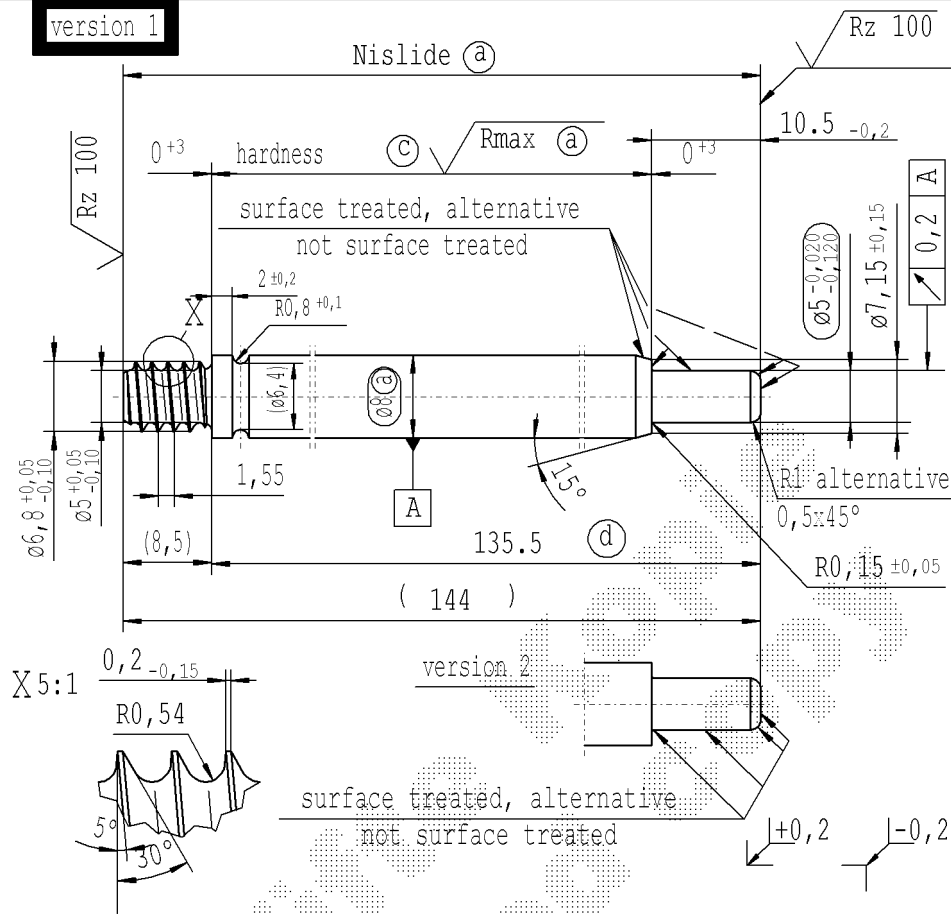


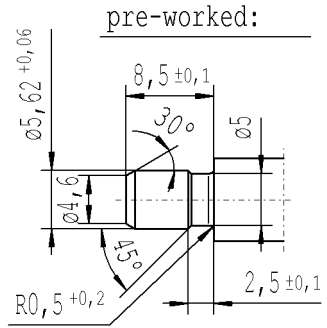
CONFIDENTIAL!
Intended for internal use only

supp No.	material no.				A	B	E	F	G	
	table IV Nislide black for STUS / STMA table IV acc. STAB-Spec. 10210309	table V Nislide light	table VIII Nislide black polished	table X Nislide "G"						surface treatment processing acc. to STAB-Spec. 10006248
1	368093			368093	144	10.5	135.5	1		
2	885771			885771	162	10.5	153.5	1		

version 1



- Ⓐ piston rod processing acc. STAB-Spec. 10006248
- Ⓒ before grinding: Hardness depth and hardness test acc. to STAB-Spec. 10258370
- Ⓓ tolerances: $\pm 0,2$ after turning
 $\pm 0,1$
 $\pm 0,3$ after straightening
 $\pm 0,3$ after nisliding



sheet 1
of 1

Environmental protection acc. to STAB-Spec. 10005649

DE: X	EN: X	ES: X	IT:	PR: X	FR:	RO: X	CAD created document handwritten changes not permitted
new	INITIAL RELEASE	Ⓒ = acc. STAB-Spec. 10258370					
old	-	Ⓒ = RHT 0,4 ... 0,7 mm					
Field	-	B 6-8					
Date/Name	04.08.2017 Höfer	08.05.2019 Höfer					
Chg. No.	-	678170					
Rev.	0	1					

Material:	All dimensions are in mm	Identification of important characteristics	Drawn by	Date	Name
mat.no.: 010731	Scale: (Original DIN A3) 2:1	Dimensions without tolerances DIN ISO 2768 mK	Checked	08.11.1999	Höfer
Edge tolerances acc. to DIN ISO 13715					
Surface finish acc. to DIN EN ISO 1302					
Regulations:	We reserve all rights to this document, to any patents or patent registrations related hereto, and to the duplication, retransmission by third parties and misc. use. Any use of this document is not permitted without the written consent of STABILUS.		Document No.:	10247186	
STABILUS	PISTON ROD		Material No.:		