

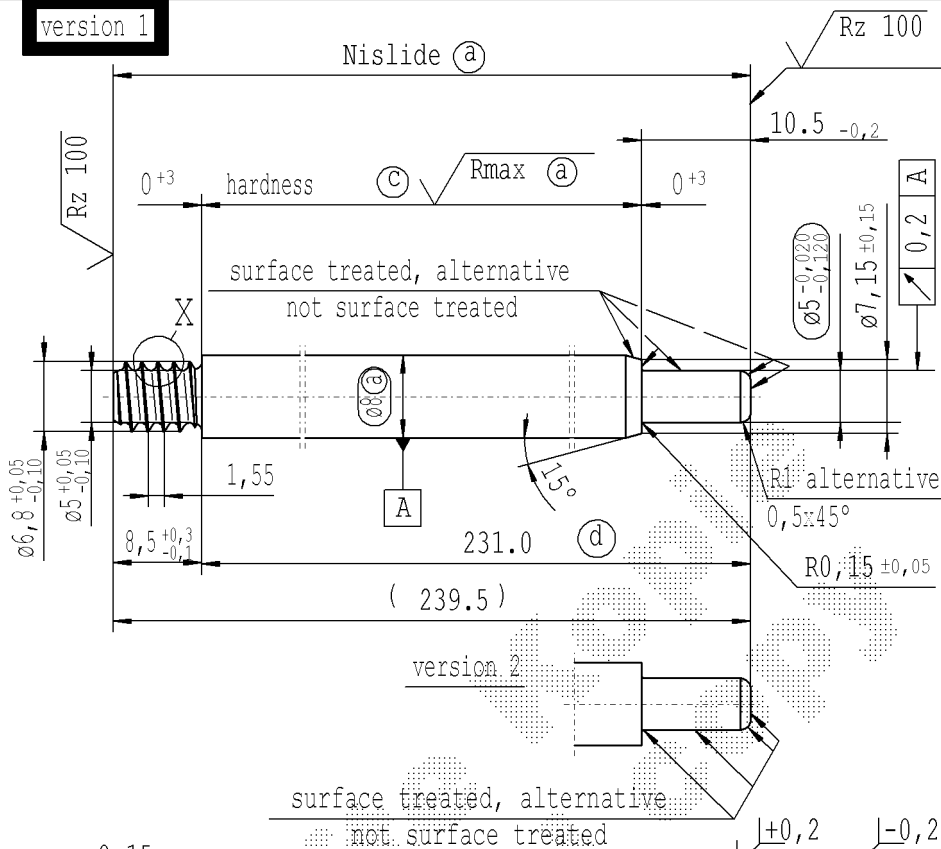
The print-out is not subject to the modification service.

Intended for internal and supplier use

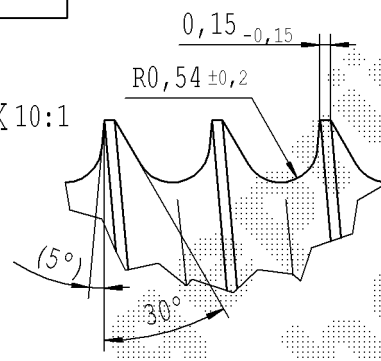
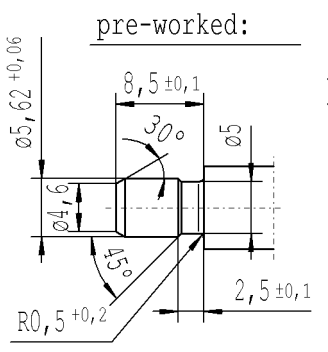
Ident. Doc.: SN 2663CB@msc11.donat: 14/11/2022 - 7:16

supp No.	material no.				KOST without surface treatment	A	B	E	F	G
	table IV Nislide black for STUS / STM acc. STAB-Spec. 10210309	table V Nislide light	table VIII Nislide black polished	table X Nislide "G"		overall length	stud length piston side	length without endfitting stud	version	only tab. IV allowable
364	6855YP			6855YP	235.0	10.5	226.5	1		
365	7176YM			7176YM	239.5	10.5	231.0	1		
366	4992YP			4992YP	208.0	15.0	199.5	2		
367	5132YS			5132YS	215.5	10.5	207.0	1		
368	0662ZB			0662ZB	348.0	15.0	339.5	2		
369				2568ZQ	221.5	10.5	213.0	1		
370	5016YR			5016YR	248.5	10.5	240.0	1		
371	3071ZS			3071ZS	206.0	10.5	197.5	1		
372				3622ZB	337.5	10.5	329.0	1		
373	6638ZW			6638ZW	201.0	22.5	192.5	2		
374	5016ZN			5016ZN	110.5	10.5	102.0	1		
375	5034ZL			5034ZL	283.5	10.5	275.0	1		
376				5179ZJ	262.0	10.5	253.5	1		
377				5266ZX	208.0	10.5	199.5	1		
378	6909ZO			6909ZO	389.5	10.5	381.0	1		
379	7248ZJ			7248ZJ	317.5	10.5	309.0	1		
380	8492ZO			8492ZO	175.5	10.5	167.0	1		

version 1



- (a) piston rod processing acc. STAB-Spec. 10006248 for piston rods without surface treatment grinding dimension $-0,046$ $-0,057$ Rmax after grinding $\leq 1,5 \mu\text{m}$
- (c) before grinding: Hardness depth and hardness test acc. to STAB-Spec. 10258370
- (d) tolerances: $+0,2$ $-0,1$ after turning $+0,3$ after straightening $+0,3$ after nisliding



* CUSTOMER DRAWING AVAILABLE

sheet 22 of 40

A					AIAG CQI-standards acc. to STAB-Spec. 10027692					Environmental protection acc. to STAB-Spec. 10005649									
DE: X	EN: X	ES: X	IT: X	PR: X	FR: X	RO: X	CAD created document handwritten changes not permitted					Material: mat.no.: 010731							
new	= acc. STAB-Spec. 10258370		FN parts removed-		-		(5%) no technical change, no new first sample required					All dimensions are in mm							
old	= RHT 0,4 0,7 mm		Pos. number changed		AG 008/14		5°					Scale: (Original DIN A3) 2:1							
Field	B 7-8		-		B2		B/4-5					Marking of special characteristics according to STAB-Spec. 10270932							
Date/Name	17.04.2019 Donat		22.04.2020 Höfer		31.03.2021 Hein							Dimensions without tolerances DIN ISO 2768 mK							
Chg. No.	677953		688065		696924							We reserve all rights to this document, to any patents or patent registrations related hereto, and to the duplication, retransmission by third parties and misc. use. Any use of this document is not permitted without the written consent of STABILUS.							
Rev.	80		81		81							Document No.: 10001245							
STABILUS										PISTON ROD									
										Material No.:									