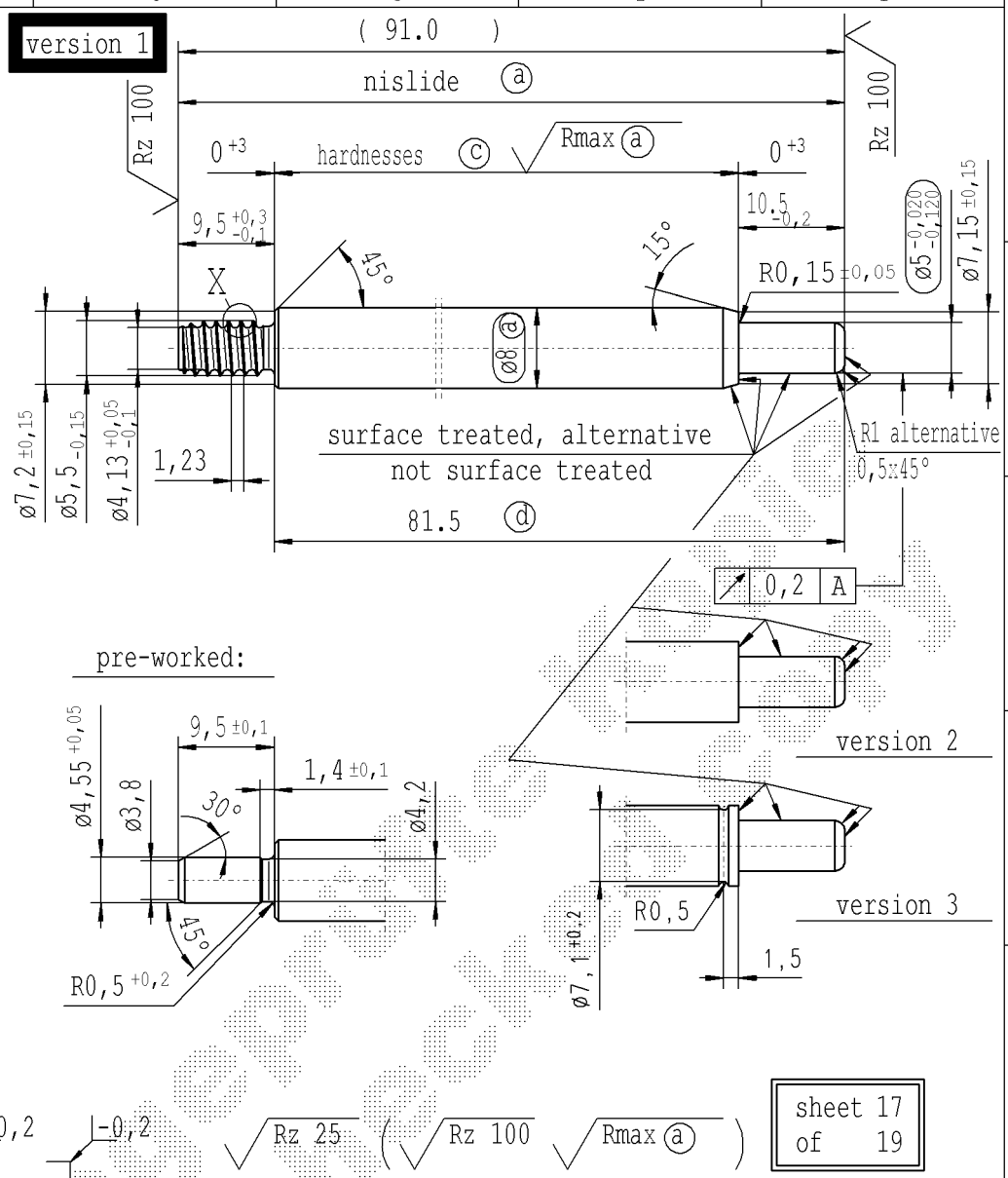
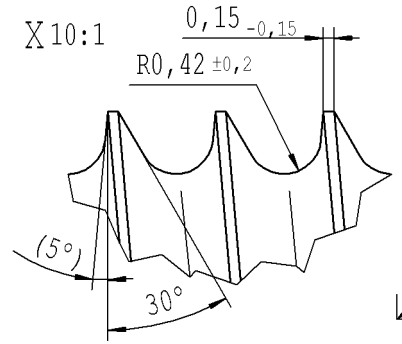


CONFIDENTIAL!
Intended for internal use only

supp. No.	material no.			A	B	E	F	G
	surface treatment processing acc. to STAB-Spec. 10006248		KOST without surface treatment	overall length	stud length piston side	length without endfitting stud	version	only tab. IV allowable
	table IV Nislide black for STUS / STMX table IV acc. STAB-Spec. 10210309	table VIII Nislide black polished						
467	266751		266751	282.0	10.5	272.5	1	
468	383144			330.0	10.5	320.5	1	X
469			785618	321.0	10.5	311.5	1	
470	799960		799960	132.0	22.5	122.5	2	
471			261494	135.0	10.5	125.5	1	
472	261733			135.0	10.5	125.5	1	
473	964154		964154	91.0	10.5	81.5	1	
474	709861		709861	120.0	22.5	110.5	2	
475	729937		729937	224.0	10.5	214.5	1	
476	808090			279.0	10.5	269.5	1	X
477	718227		718227	159.0	10.5	149.5	1	
479	994272		994272	265.0	23.5	255.5	2	
480	202227		202227	69.0	10.5	59.5	1	
481	335589		335589	129.0	22.5	119.5	2	
482	462976		462976	278.5	10.5	269.0	1	
484	861628		862584	315.0	10.5	305.5	1	



- Ⓐ piston rod processing per STAB-Spec. 10006248
- Ⓒ before grinding:
Hardness depth and hardness test acc. to STAB-Spec. 10258370
- Ⓓ tolerance $\begin{matrix} +0,2 \\ -0,1 \end{matrix}$ after turning
 $\begin{matrix} +0,3 \\ -0,1 \end{matrix}$ after straightening
 $\begin{matrix} +0,3 \\ -0,1 \end{matrix}$ after nisliding



$\sqrt{Rz 25}$ ($\sqrt{Rz 100}$ $\sqrt{Rmax (a)}$)

sheet 17
of 19

Environmental protection acc. to STAB-Spec. 10005649

DE: X	EN: X	ES: X	IT:	PR: X	FR:	RO: X	CAD created document handwritten changes not permitted				
new	R0,42 ± 0,15 -0,15	Supplier / KOST w/o surface	rom. version created	9,5 $\begin{matrix} +0,3 \\ -0,1 \end{matrix}$	Ⓒ = acc. STAB-Spec. 10258370	(5°)					
old	R1,26 0,38 -0,15	internal /	-	-	Ⓒ = RHT 0,4 0,7 mm	4°					
Field	B/5-6	-	-	F/4	C 7-8	B/6					
Date/Name	28.04.2010 Hein	16.05.2014 Donat	28.06.2016 Jablonski	01.04.2019 Hein	17.04.2019 Donat	31.03.2021 Hein					
Chg. No.	579932	613491	640401	677184	677953	696924					
Rev.	39	40	41	42	43	44					

Material: mat. No. 010731

Edge tolerances acc. to DIN ISO 13715

Surface finish acc. to DIN EN ISO 1302

Registries: Zimex-11-Wr.v.11.10.93

STABILUS

All dimensions are in mm

Scale: (Original DIN A3) 2:1

Marking of special characteristics according to STAB-Spec. 10270932

Dimensions without tolerances DIN ISO 2768-mK

We reserve all rights to this document, to any patents or patent registrations related hereto, and to the duplication, retransmission by third parties and misc. use. Any use of this document is not permitted without the written consent of STABILUS.

PISTON ROD

Drawn by	Date	Name
Checked	17.12.1998	Keelheim
	31.03.2021	Klinkner

Document No.: 10001097

Material No.: