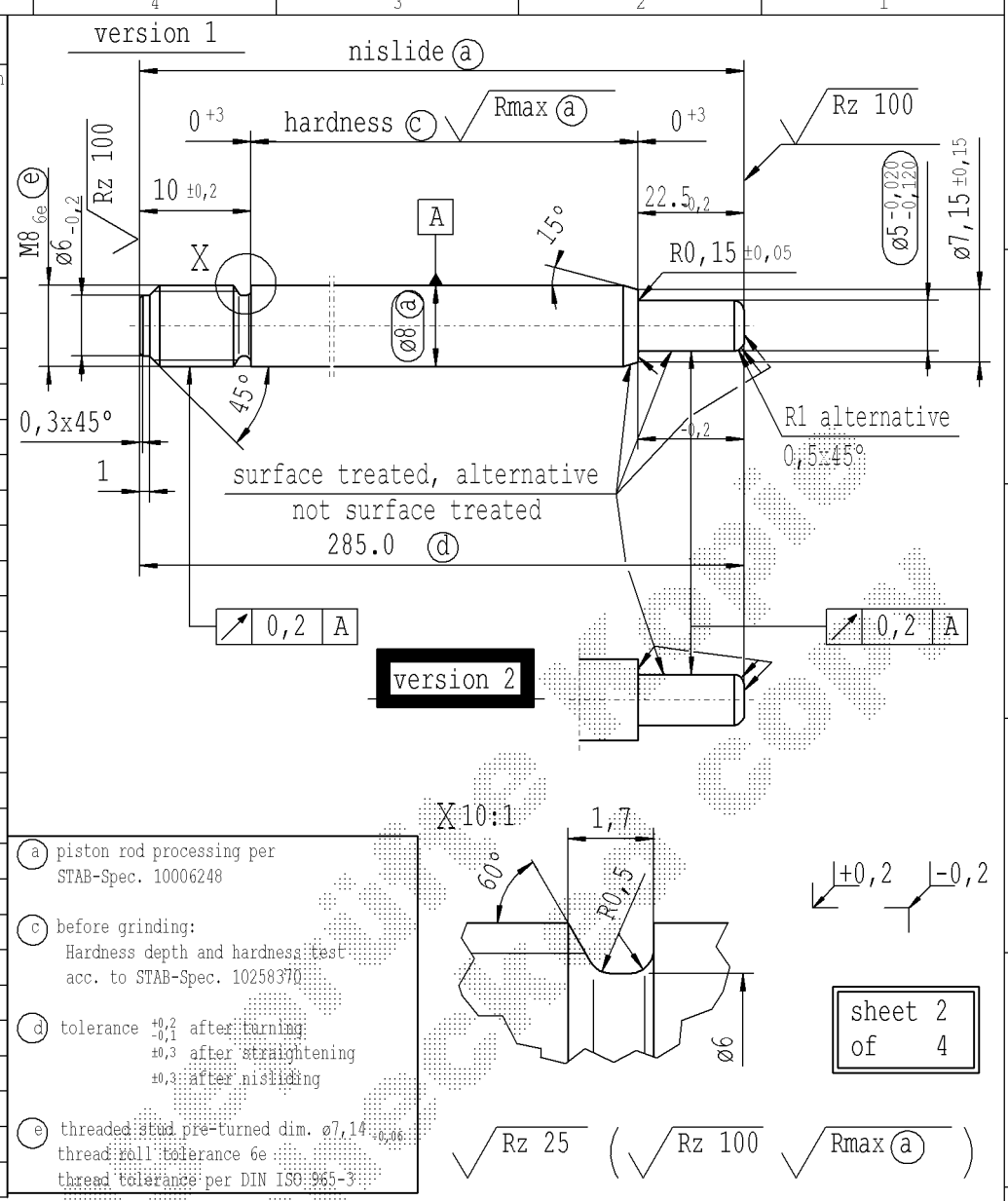
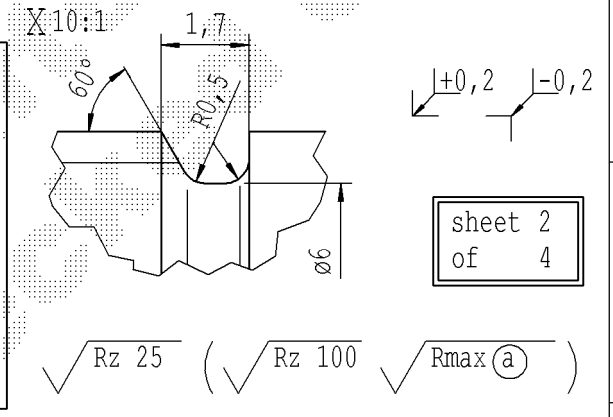


Ident. Doc.: SN 53.11-006/097-Rev. 16/02/2023 - 8:27

F	supp. No.	material no.				A	B	C	D
		table IV Nislid black	table X Nislid "G"	table VIII Nislid black polished	table XVI Nislid black				
		surface treatment processing acc. to STAB-Spec. 10006248							
		for STUS / STMX table IV acc. STAB-Spec. 10210309			KOST without surface treatment	overall length	stud length end- fitting side	stud length piston side	version
					only for STUS / STMX				
	49	674226	674226			285.0	10	22.5	2
	52	278206	278206			312.0	10	22.5	2
E	53	855152	855152			234.0	10	10.5	1
	54	317404	317404			324.0	10	22.5	2
	55	971309		971309		231.0	10	10.5	1
	56	620935			338917	396.0	10	22.5	2
	58			653441		243.0	10	10.5	1
	59	736375	736375			279.0	10	22.5	2
	60	534421	534421			336.0	10	10.5	1
D	61	761470	761470			281.5	10	10.5	1
	62	785610	785610			279.0	10	10.5	1
	63	804251				297.0	10	22.5	2
	64	073391	073391			267.0	10	10.5	1
	65	833648	833648			303.0	10	22.5	2
	66	858026	858026			264.0	9	22.5	2
	67	415400	415400			207.0	10	10.5	1
	69				974180	285.0	10	22.5	2
	70	038735	038735			270.0	10	22.5	2
	71	813335	813335			276.0	10	10.5	1
	74	558562	558562			246.0	10	22.5	2
	75	572663	572663			261.0	10	22.5	2
	76	954825	954825			249.0	10	10.5	1
B	80	109244	109244			330.0	10	10.5	1
	82	940964	940964			387.0	10	22.5	2
	84			468941		285.0	10	10.5	1
	85	726105	726105			285.0	9	22.5	2



- (a) piston rod processing per STAB-Spec. 10006248
- (c) before grinding:
Hardness depth and hardness test acc. to STAB-Spec. 10258370
- (d) tolerance +0,2 after turning
+0,3 after straightening
+0,3 after nisliding
- (e) threaded stud pre-turned dim. $\phi 7,14$
thread roll tolerance 6e
thread tolerance per DIN ISO 965-3



sheet 2
of 4

DE: X						EN: X						ES:						IT:						PR:						FR:						RO: X						Material: mat. no.: 010731						All dimensions are in mm						Identification of important characteristics						Date						Name					
new						Tab.XVI						Creation of romanian drawing						9						© = acc. STAB-Spec. 10258370						Edge tolerances acc. to DIN ISO 13715						Scale: (Original DIN A3) 2:1						Dimensions without tolerances DIN ISO 2768-mK						Drawn by 04.09.1992						Kirsch																	
old																		10						© = RHT 0,4 ... 0,7 mm						Surface finish: DIN EN ISO 1302												Checked 07.05.2019						Miles																							
Field												Pos.66 B						B 4						Regulices: SN 53.11-08/97												Document No.: 10003803						Material No.:																													
Date/Name						16.11.2015 Höfer						17.03.2016 YaMueller						29.04.2016 Höfer						07.05.2019 Jablonski																																															
Chg. No.						630705						635493						637297						678352																																															
Rev.						24						25						26						27																																															

STABILUS

PISTON ROD