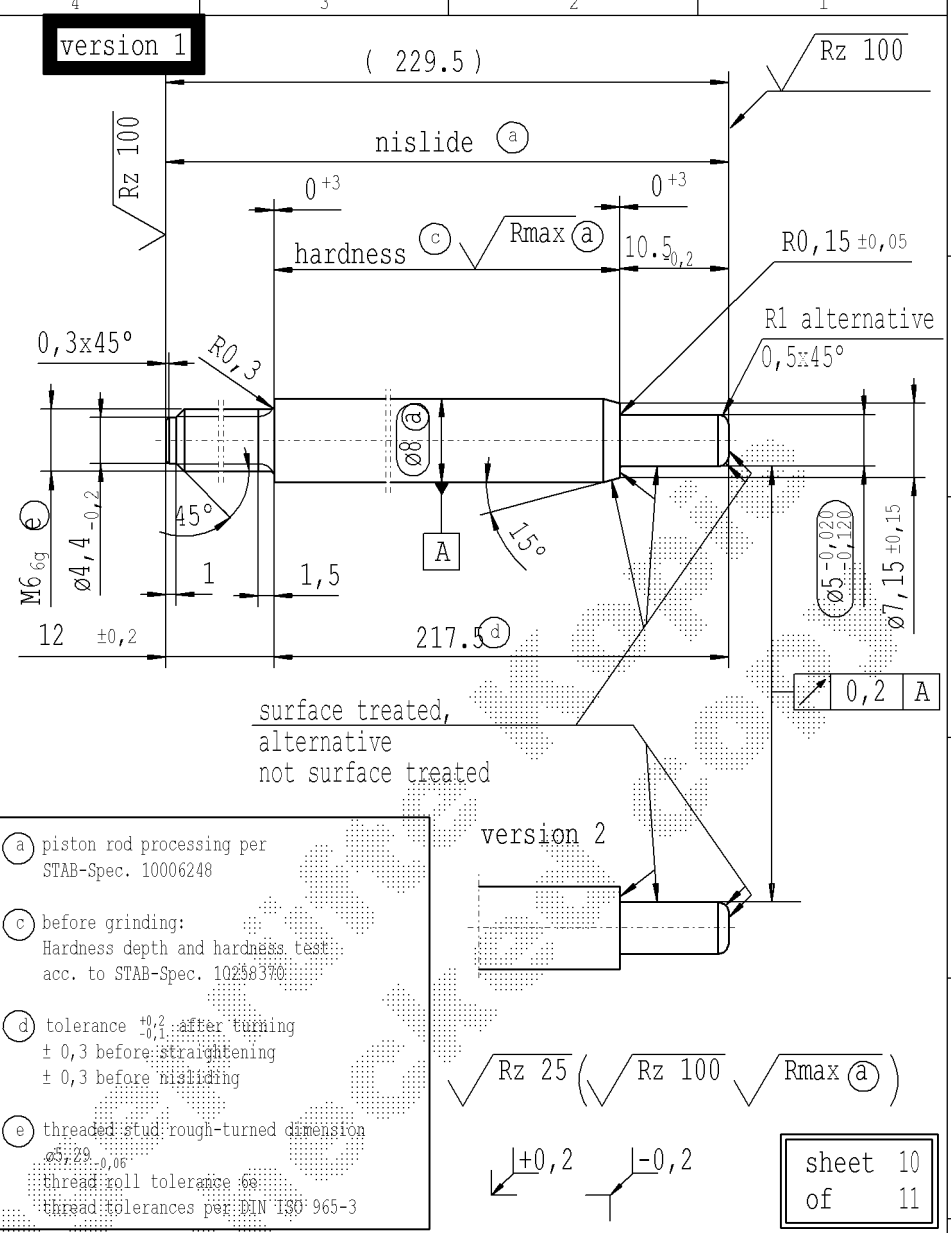


Ident. Doc.: SN 53.11=0604@mm: 29/12/2022 - 16137

The print-out is not subject to the modification service.

Intended for internal and supplier use

supp No.	material no.				KOST without surface treatment	A	B	C	E	F
	table IV Nislide black	table V Nislide light	table VIII Nislide black polished	table X Nislide "G"		overall length	stud length end-fitting side	stud length piston side	length without end-fitting stud	version
	surface treatment processing acc. to STAB-Spec. 10006248									
	for STUS / STMX table IV acc. STAB-Spec. 10210309									
418	385545			385545	96.0	10	10.5	86.0	1	
419	693377			693377	216.0	10	10.5	206.0	1	
420	708673			708673	243.0	10	10.5	233.0	1	
421	398213			398213	117.0	7	22.5	110.0	2	
422	400603			400603	120.0	10	22.5	110.0	2	
423		498593			309.0	10	10.5	299.0	1	
424				963926	342.0	7	10.5	335.0	1	
425	781570			781570	318.0	10	10.5	308.0	1	
426	626460			626460	213.0	10	11.0	203.0	1	
427	986155			986155	144.0	7	11	137.0	1	
428	044974			044974	348.0	10	10.5	338.0	1	
429	050471			050471	120.0	10	10.5	110.0	1	
430	052622			052622	162.0	10	10.5	152.0	1	
431	077956			077956	195.0	7	11	188.0	1	
432	386745			386745	165.0	10	22.5	155.0	2	
433	392481			392481	147.0	10	10.5	137.0	1	
434	716567			716567	339.0	7	10.5	332.0	1	
435	329388			329388	122.5	7	10.5	115.5	1	
436	437177			437177	81.0	7	10.5	74.0	1	
437	621924			621924	136.5	10	10.5	126.5	1	
438	877177			877177	165.0	7	10.5	158.0	1	
439	156832			156832	229.5	12	10.5	217.5	1	
440	099712			099712	231.0	13	10.5	218.0	1	
441	278007			278007	441.0	10	22.5	431.0	2	
442	357834			357834	369.0	7	10.5	362.0	1	
443				365721	126.0	7	10.5	119.0	1	



AIAG CQI-standards acc. to STAB-Spec. 10027692										Environmental protection acc. to STAB-Spec. 10005649						
DE: X	EN: X	ES: X	IT: X	PR: X	FR:	RO: X	CAD created document handwritten changes not permitted			Material:	All dimensions are in mm	Identification of important characteristics		Drawn by	Date	Name
new	R1 alternative 0,5x45°			Tab.IV		Supplier / KOST w/o surface	Creation of romanian drawing	⊕ = acc. STAB-Spec. 10238370	mat.no.: 010731	Scale:	Dimensions without tolerances		Checked	29.04.1992	Kirsch	
old	0,5x45° alternative R1			TAB.IX+X		internal / -	-	⊕ = RHT 0,4 ... 0,27 mm	Edge tolerances acc. to DIN ISO 13715	(Original DIN A3)	DIN ISO 2768-mK			08.05.2019	Miles	
Field	E/1			205893		-	-	C 3-4	Surface finish: DIN EN ISO 1302	We reserve all rights to this document, to any patents or patent registrations related hereto, and to the duplication, retransmission by third parties and misc. use. Any use of this document is not permitted without the written consent of STABILUS.						
Date/Name	19.03.2009 Hein	17.02.2012 H6			19.05.2014 Donat	07.04.2016 YaMueller	08.05.2019 Jablonski		Regulacii:	Document No.: 10003766						
Chg. No.	571413	595288			613650	635494	678350		<b>STABILUS</b>	Material No.:						
Rev.	41	42			43	44	45		<b>PISTON ROD</b>							