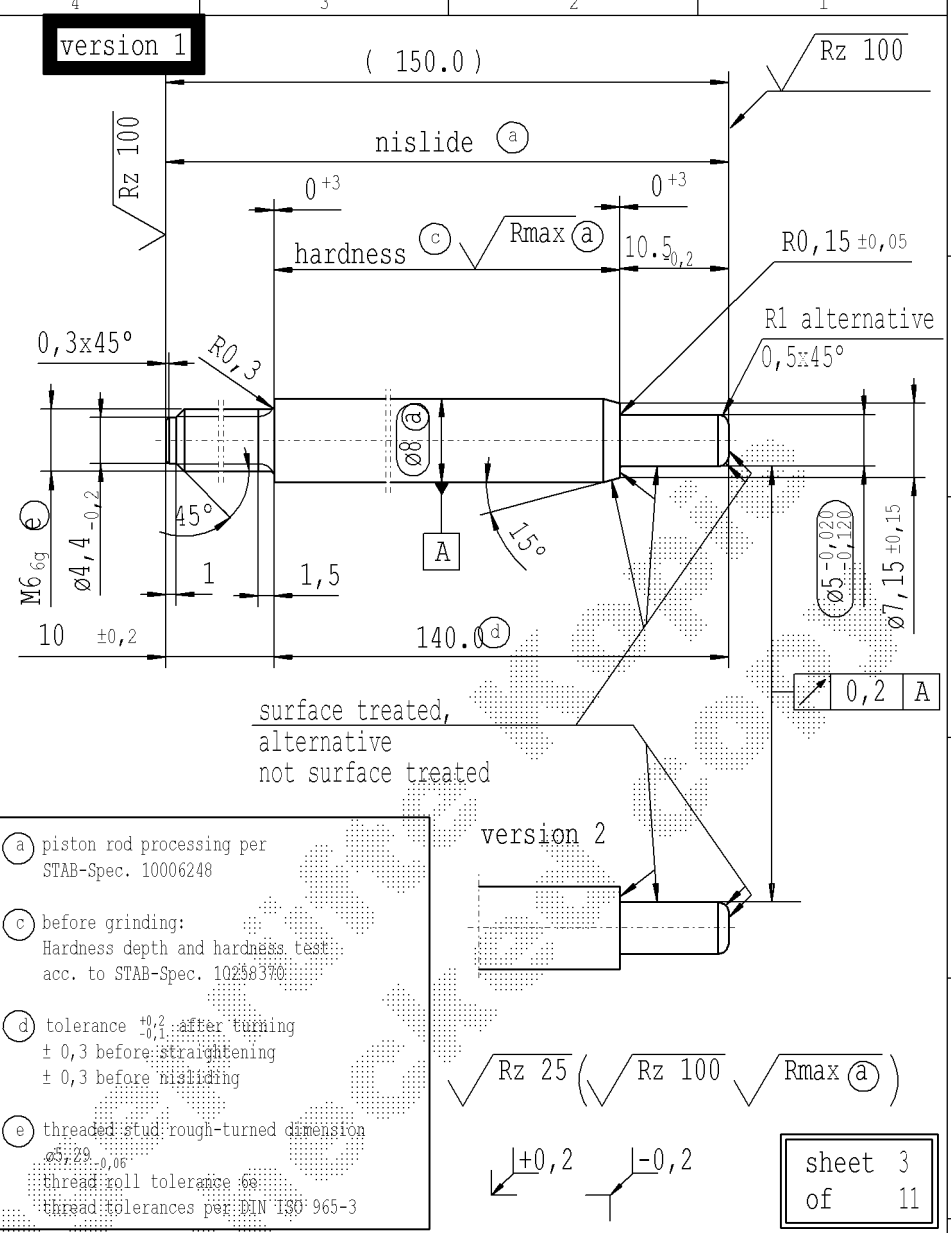


Ident. Doc.: SN 53.11.1608402 datum: 28/11/2022 - 16:37

supp No.	material no.				KOST without surface treatment only for STUS / STMX	A	B	C	E	F
	table IV Nislide black for STUS / STMX table IV acc. STAB-Spec. 10210309	table V Nislide light	table VIII Nislide black polished	table X Nislide "G"		overall length	stud length end-fitting side	stud length piston side	length without end-fitting stud	version
134	3415PT			3415PT	462.0	10	10.5	452.0	1	
135	3427PD			3427PD	120.0	10	11.5	110.0	1	
136	2649PC			2649PC	108.0	7	10.5	101.0	1	
138	6578PS			6578PS	204.0	7	10.5	197.0	1	
141	7816PI			7816PI	375.0	7	10.5	368.0	1	
143	8336PX			8336PX	300.0	10	10.5	290.0	1	
144	8348PH			8348PH	354.0	7	10.5	347.0	1	
146	3754QC			3754QC	240.0	7	10.5	233.0	1	
149	5095QG			5095QG	280.0	7	22.5	273.0	2	
150	5445QI			5445QI	253.0	7	10.5	246.0	1	
151	6062QE			6062QE	198.0	7	10.5	191.0	1	
156	8576QI			8576QI	162.0	7	10.5	155.0	1	
158	8877QJ			8877QJ	156.0	7	10.5	149.0	1	
159	8798QR			8798QR	306.0	10	10.5	296.0	1	
162	4941RY			4941RY	300.0	7	10.5	293.0	1	
167	5971RZ			5971RZ	249.0	7	10.5	242.0	1	
168	0719SR			0719SR	201.0	7	10.5	194.0	1	
170		1168YC			261.0	10	10.5	251.0	1	
171	9556RI			9556RI	121.5	7	10.5	114.5	1	
172	3295SA			3295SA	132.0	7	10.5	125.0	1	
174	7241SS			7241SS	246.0	7	10.5	239.0	1	
176	8114SU			8114SU	225.0	7	10.5	218.0	1	
179	8462SG			8462SG	219.0	7	10.5	212.0	1	
180	8697SD			8697SD	282.0	7	10.5	275.0	1	
183	6356TL			6356TL	150.0	10	10.5	140.0	1	
184	6379TL			6379TL	141.0	10	10.5	131.0	1	



- (a) piston rod processing per STAB-Spec. 10006248
- (c) before grinding: Hardness depth and hardness test acc. to STAB-Spec. 10238370
- (d) tolerance $\pm 0,1$ after turning $\pm 0,3$ before straightening $\pm 0,3$ before nisliding
- (e) threaded stud rough-turned dimension $\pm 0,2$ thread roll tolerance $\pm 0,06$ thread tolerances per DIN ISO 965-3

A										AIAG CQI-standards acc. to STAB-Spec. 10027692										Environmental protection acc. to STAB-Spec. 10005649																																							
DE: X	EN: X	ES: X	IT: X	PR: X	FR:	RO: X	CAD created document handwritten changes not permitted			Material: mat.no.: 010731										All dimensions are in mm										Identification of important characteristics										Date: 29.04.1992										Name: Kirsch									
new	R1 alternative 0,5x45°				Tab.IV		Supplier / KOST w/o surface			Creation of romanian drawing			© = acc. STAB-Spec. 10238370			Scale: 2:1										Dimensions without tolerances										Checked: 08.05.2019										Milles													
old	0,5x45° alternative R1				TAB.IX+X		internal / -			-			© = RHT 0,4 ... 0,27 mm			Edge tolerances acc. to DIN ISO 13715										Surface finish: DIN ISO 1302										We reserve all rights to this document, to any patents or patent registrations related hereto, and to the duplication, retransmission by third parties and misc. use. Any use of this document is not permitted without the written consent of STABILUS.										Document No.: 10003766													
Field	E/1				205893		-			-			C 3-4			Regulations:										Material No.:																																	
Date/Name	19.03.2009 Hein				17.02.2012 H6		19.05.2014 Donat			07.04.2016 YaMueller			08.05.2019 Jablonski			STABILUS										PISTON ROD										Material No.:																							
Chg. No.	571413				595288		613650			635494			678350																																														
Rev.	41				42		43			44			45																																														