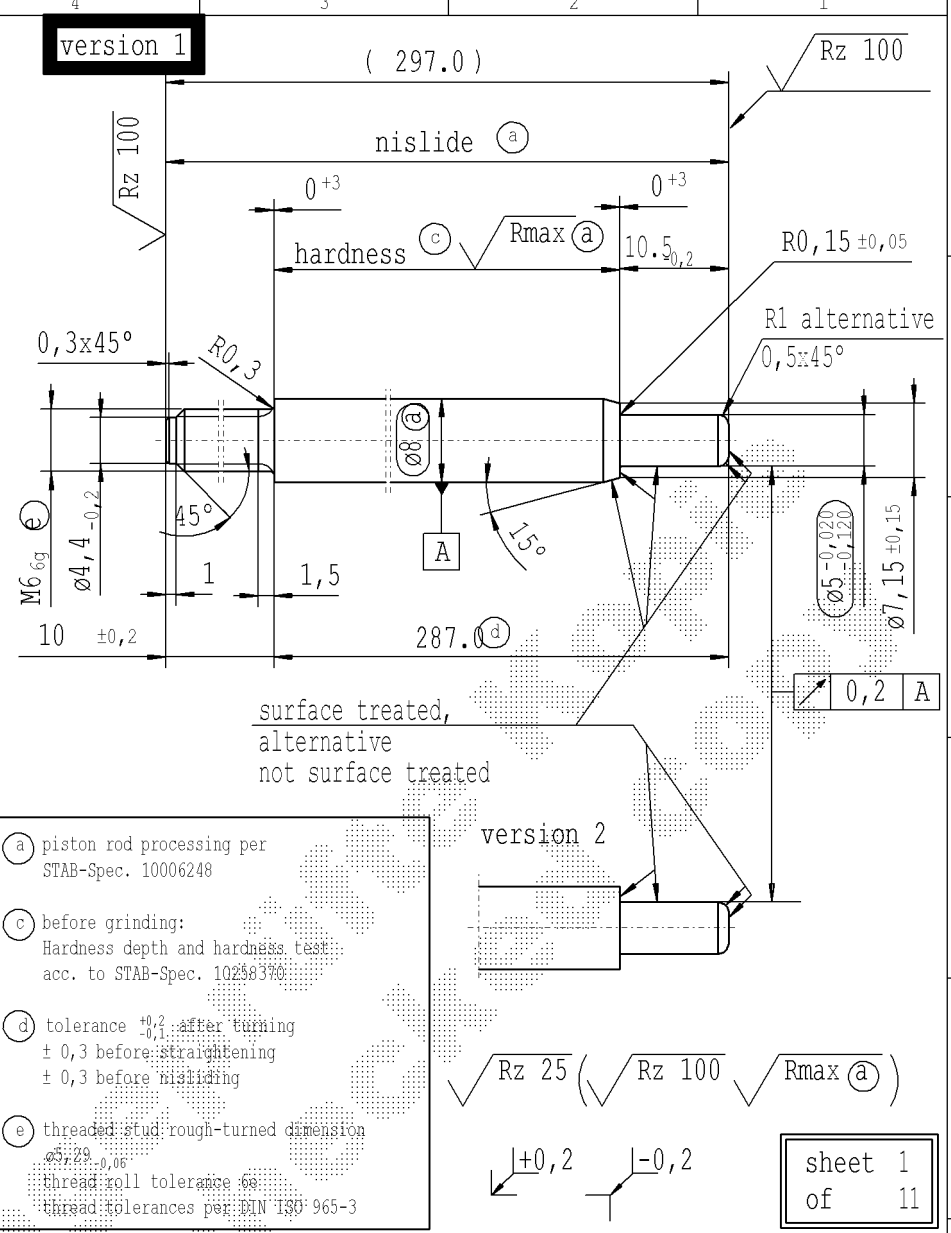


Ident. Doc.: SN 53.11=0044@mm: 29/12/2022 - 16137

supp No.	material no.				A	B	C	E	F
	table IV Nislide black	table V Nislide light	table VIII Nislide black polished	table X Nislide "G"					
	surface treatment processing acc. to STAB-Spec. 10006248				overall length	stud length end-fitting side	stud length piston side	length without end-fitting stud	version
	for STUS / STMX table IV acc. STAB-Spec. 10210309			KOST without surface treatment only for STUS / STMX					
1	341242			341242	159.0	10	10.5	149.0	1
11	8454DI			8454DI	276.0	10	10.5	266.0	1
13	9559DW			9559DW	279.0	7	10.5	272.0	1
16	784494			784494	285.0	6	10.5	279.0	1
19	493341			493341	111.0	10	10.5	101.0	1
22	9329FT			9329FT	156.0	10	10.5	146.0	1
23	0139GO			0139GO	273.0	10	10.5	263.0	1
25			2741QE		277.0	7	10.5	270.0	1
30	1438HN			1438HN	159.0	10	10.5	149.0	1
31	498173			498173	129.0	10	10.5	119.0	1
32	1506HH			1506HH	197.5	10	10.5	187.5	1
33	1426HC			1426HC	229.5	10	10.5	219.5	1
35	7213HQ			7213HQ	223.5	10	10.5	213.5	1
38	8285HK			8285HK	337.0	10	10.5	327.0	1
39	4994HT			4994HT	134.0	7	10.5	127.0	1
40	4331HE			4331HE	191.5	10	10.5	181.5	1
41	4701IR			4701IR	99.0	7	10.5	92.0	1
43	399507			399507	120.0	6	10.5	114.0	1
48	4939LO			4939LO	207.0	7	10.5	200.0	1
50	600180			600180	99.0	6	10.5	93.0	1
51		006526			315.0	10	10.5	305.0	1
60	4198AC			4198AC	297.0	10	10.5	287.0	1
64	24635Z			24635Z	225.0	10	10.5	215.0	1
66		4095XN			339.0	10	10.5	329.0	1
67	185833			185833	310.0	10	10.5	300.0	1
68	2865EN			2865EN	279.0	10	10.5	269.0	1



- (a) piston rod processing per STAB-Spec. 10006248
- (c) before grinding: Hardness depth and hardness test acc. to STAB-Spec. 10238370
- (d) tolerance $\pm 0,2$ after turning $\pm 0,3$ before straightening $\pm 0,3$ before nisliding
- (e) threaded stud rough-turned dimension $\pm 0,2$ thread roll tolerance $\pm 0,06$ thread tolerances per DIN ISO 965-3

AIAG CQI-standards acc. to STAB-Spec. 10027692										Environmental protection acc. to STAB-Spec. 10005649							
DE: X	EN: X	ES: X	IT: X	PR: X	FR:	RO: X	CRD created document handwritten changes not permitted			Material:	All dimensions are in mm		Identification of important characteristics		Drawn by	Date	Name
new	R1 alternative 0,5x45°		Tab.IV		Supplier / KOST w/o surface	Creation of romanian drawing	© = acc. STAB-Spec. 10238370			mat.no.: 010731	Scale: (Original DIN A3) 2:1		Dimensions without tolerances DIN ISO 2768-mK		Checked	08.05.2019	Milles
old	0,5x45° alternative R1		TAB.IX+X		internal / -	-	© = RHT 0,4 ... 0,27 mm			Edge tolerances acc. to DIN ISO 13715	We reserve all rights to this document, to any patents or patent registrations related hereto, and to the duplication, retransmission by third parties and misc. use. Any use of this document is not permitted without the written consent of STABILUS.		Document No.: 10003766				
Field	E/1		205893		-	-	C 3-4			Surface finish: DIN ISO 1302	Regulacii:		Material No.:				
Date/Name	19.03.2009 Hein	17.02.2012 H6		19.05.2014 Donat	07.04.2016 YaMueller	08.05.2019 Jablonski											
Chg. No.	571413	595288		613650	635494	678350											
Rev.	41	42		43	44	45				STABILUS	PISTON ROD						