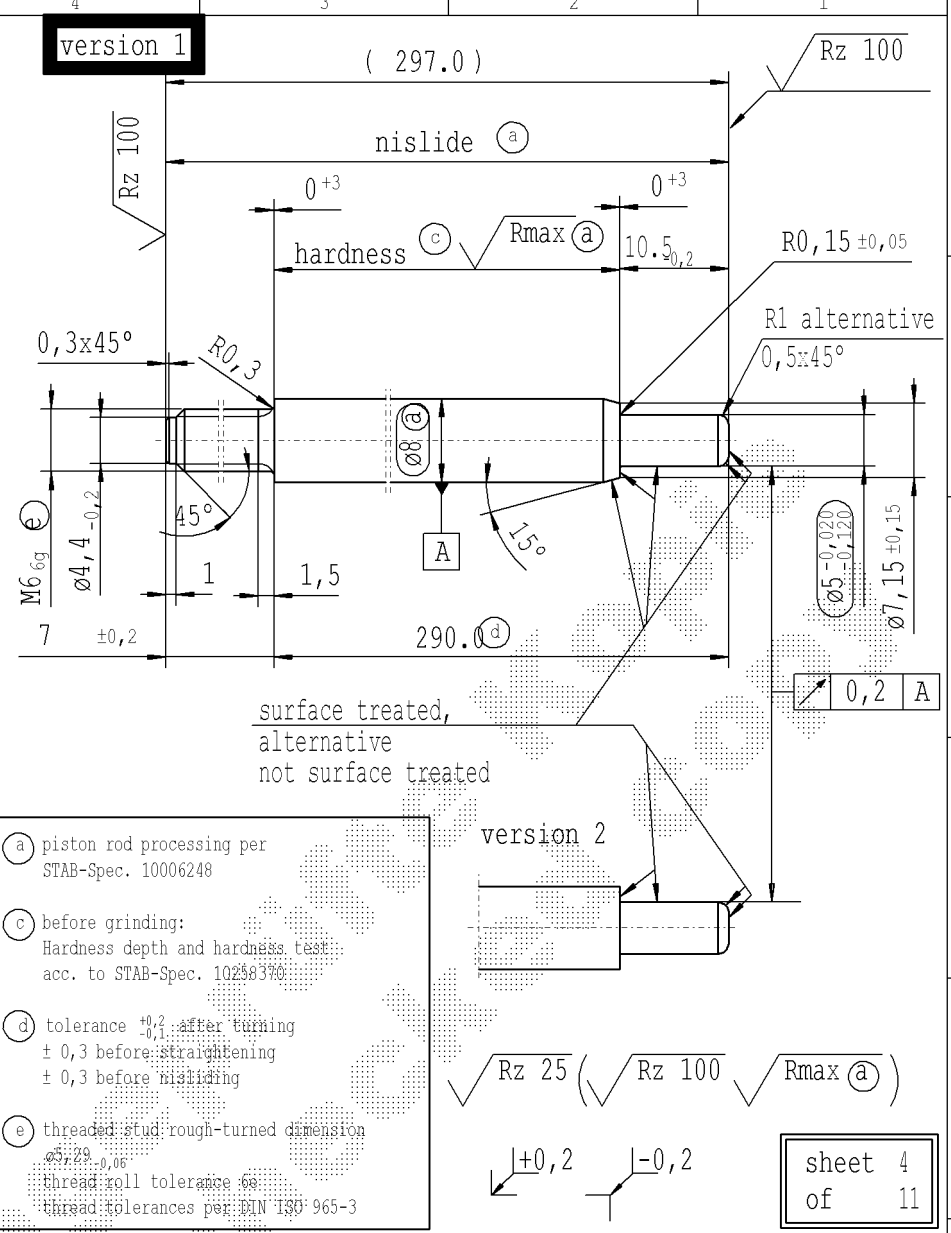


Ident. Doc.: SN 53.11=0644@max. 29/12/2022 - 16137

supp No.	material no.				KOST without surface treatment only for STUS / STMX	A	B	C	E	F
	table IV Nislide black for STUS / STMX table IV acc. STAB-Spec. 10210309	table V Nislide light	table VIII Nislide black polished	table X Nislide "G"		overall length	stud length end-fitting side	stud length piston side	length without end-fitting stud	version
185	6389TF			6389TF	135.0	10	10.5	125.0	1	
186	6968TH			6968TH	297.0	7	10.5	290.0	1	
187	8905TP			8905TP	120.0	7	10.5	113.0	1	
188	9421TX			9421TX	102.0	7	10.5	95.0	1	
190	1262UO			1262UO	231.0	10	10.5	221.0	1	
191	3409UM			3409UM	192.0	7	10.5	185.0	1	
193				4721UL	198.0	7	10.5	191.0	1	
195	6737UN			6737UN	195.0	7	10.5	188.0	1	
197	6857UV			6857UV	237.0	7	10.5	230.0	1	
198	6872UH			6872UH	252.0	7	10.5	245.0	1	
200	6956UT			6956UT	315.0	7	10.5	308.0	1	
201	7043UO			7043UO	294.0	7	10.5	287.0	1	
202	7349UR			7349UR	264.0	10	10.5	254.0	1	
203	7374UY			7374UY	123.0	7	10.5	116.0	1	
204	9505UE			9505UE	126.0	7	10.5	119.0	1	
207	0539VH			0539VH	261.0	7	10.5	254.0	1	
208	7808UL			7808UL	165.0	6	10.5	159.0	1	
210	0938VL			0938VL	111.0	6	10.5	105.0	1	
211		1325VM			103.5	10	10.5	93.5	1	
212	1909VQ			1909VQ	247.0	7	10.5	240.0	1	
213	2768VS			2768VS	292.0	7	10.5	285.0	1	
219	7467VE			7467VE	230.0	7	10.5	223.0	1	
220	7534VD			7534VD	141.0	7	10.5	134.0	1	
222	0686WI			0686WI	145.0	7	10.5	138.0	1	
223	9008VU			9008VU	447.0	10	10.5	437.0	1	
224	1083WD			1083WD	330.0	7	10.5	323.0	1	



A										Material:		All dimensions are in mm		Identification of important characteristics		Date		Name	
ATAG CQI-standards acc. to STAB-Spec. 10027692										mat.no.: 010731		Scale: (Original DIN A3) 2:1		Dimensions without tolerances DIN ISO 2768-mK		Checked 08.05.2019		Milles	
CAD created document handwritten changes not permitted										Edge tolerances acc. to DIN ISO 13715		We reserve all rights to this document, to any patents or patent registrations related hereto, and to the duplication, retransmission by third parties and misc. use. Any use of this document is not permitted without the written consent of STABILUS.		Document No.: 10003766		Material No.:			
DE: X	EN: X	ES: X	IT: X	PR: X	FR:	RO: X	CRD created document handwritten changes not permitted			Surface finish: DIN EN ISO 1302		Regulärer:		STABILUS		PISTON ROD			
new	R1 alternative 0,5x45°	Tab.IV	Supplier / KOST w/o surface			Creation of romanian drawing			© = acc. STAB-Spec. 10210370										
old	0,5x45° alternative R1	TAB.IX+X	internal / -			-			© = RHT 0,4 ... 0,27 mm										
Field	E/1	205893	-			-			C 3-4										
Date/Name	19.03.2009 Hein	17.02.2012 H6	19.05.2014 Donat			07.04.2016 YaMueller			08.05.2019 Jablonski										
Chg. No.	571413	595288	613650			635494			678350										
Rev.	41	42	43			44			45										