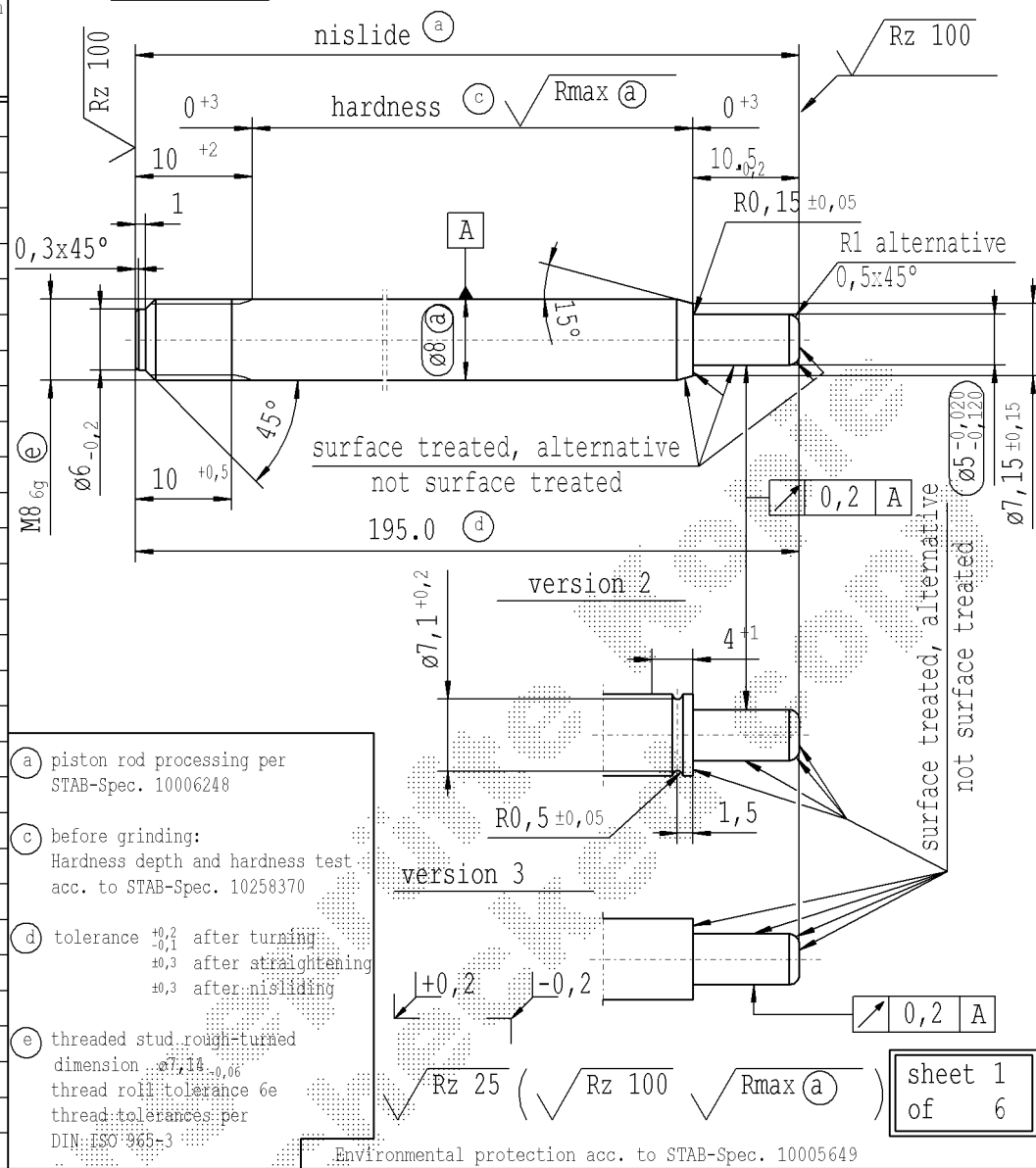


CONFIDENTIAL!
Intended for internal use only

supp. No.	material no.				A	B	C	D	version
	surface treatment processing acc. to STAB-Spec. 10006248								
	table IV Nislid black	table VIII Nislid black	table X Nislid G	table V Nislid bright					
3	999024		999024		159.0	6	10.5	1	
8	2813AQ		2813AQ		207.0	10	10.5	1	
14	2845BK		2845BK		426.0	10	10.5	1	
16	488488		488488		255.0	10	10.5	1	
21	304638		304638		102.0	10	10.5	1	
22	540285		540285		174.0	10	10.5	1	
25		2769QG			300.0	10	10.5	1	
28	540293		540293		219.0	10	10.5	1	
30	344036		344036		289.5	10	10.5	1	
31	2805CD		2805CD		261.0	10	10.5	1	
36	173576		173576		243.0	10	10.5	1	
39	558990		558990		216.0	10	10.5	1	
43	4592DT		4592DT		153.0	10	10.5	1	
47	524573		524573		318.0	10	11.5	2	
51	8945GQ		8945GQ		180.0	10	10.5	1	
59	291366		291366		126.0	10	10.5	1	
60	9114HC		9114HC		168.0	10	10.5	1	
62	371114		371114		171.0	10	10.5	1	
63	312797		312797		129.0	8	10.5	1	
65	337935		337935		123.0	10	10.5	1	
68	353132		353132		124.0	10	10.5	1	
78	506575		506575		195.0	10	10.5	1	
80	514586		514586		132.0	10	10.5	1	
85	540161		540161		267.0	10	10.5	1	
91	354387		354387		204.0	10	10.5	1	
102	861243	4658QI	861243		432.0	8	10.5	1	
103	2775EO		2775EO		264.0	10	10.5	1	
107	263133		263133		161	10	10.5	1	
108	7277BL		7277BL		129.0	10	10.5	1	
113	3165EA		3165EA		198.0	10	10.5	1	

version 1



- (a) piston rod processing per STAB-Spec. 10006248
- (c) before grinding:
Hardness depth and hardness test acc. to STAB-Spec. 10258370
- (d) tolerance $+0,2$ after turning;
 $-0,1$ after straightening;
 $+0,3$ after nisliding
- (e) threaded stud rough-turned dimension $195,0 \pm 0,06$ thread roll tolerance 6e thread-tolerances per DIN: ISO 965-3

sheet 1 of 6

Ident. Doc.: SN 53.11-08/30-00-11:45

DE: X	EN: X	ES:	IT:	PR:	FR:	RO: X	CAD created document handwritten changes not permitted	
new	Tab. V	surface treated ...	0,5x45° alternative R1	R1 alternative 0,5x45°	rom. version created	© = acc. STAB-Spec. 10238270		
old	-	-	0,5x45°	0,5x45° alternative R1	-	© = RHT 0,4 ...		
Field	-	B-E/1-3	E/1-3	E/1	-	B-C 4-5		
Date/Name	15.03.2005 Donat	23.05.2006 Schönberger	26.05.2008 Hein	19.03.2009 Hein	27.04.2016 Jablonski	08.05.2019 Jablonski		
Chg. No.	542237	550621	565549	571413	636357	678350		
Rev.	29	30	31	32	33	34		

Material: mat. no. 010731
Edge tolerances acc. to DIN ISO 13715
Surface finish acc. to DIN EN ISO 1302
Reg. No.: SN 53.11-08/30
STABILUS

All dimensions are in mm
Scale: (Original DIN A3) **2:1**
Identification of important characteristics
Dimensions without tolerances DIN ISO 2768-mK
We reserve all rights to this document, to any patents or patent registrations related hereto, and to the duplication, retransmission by third parties and misc. use. Any use of this document is not permitted without the written consent of STABILUS.
PISTON ROD

Drawn by	Date	Name
Checked	01.04.1992	Kirsch
Checked	08.05.2019	Milles
Document No.:	10003759	
Material No.:		