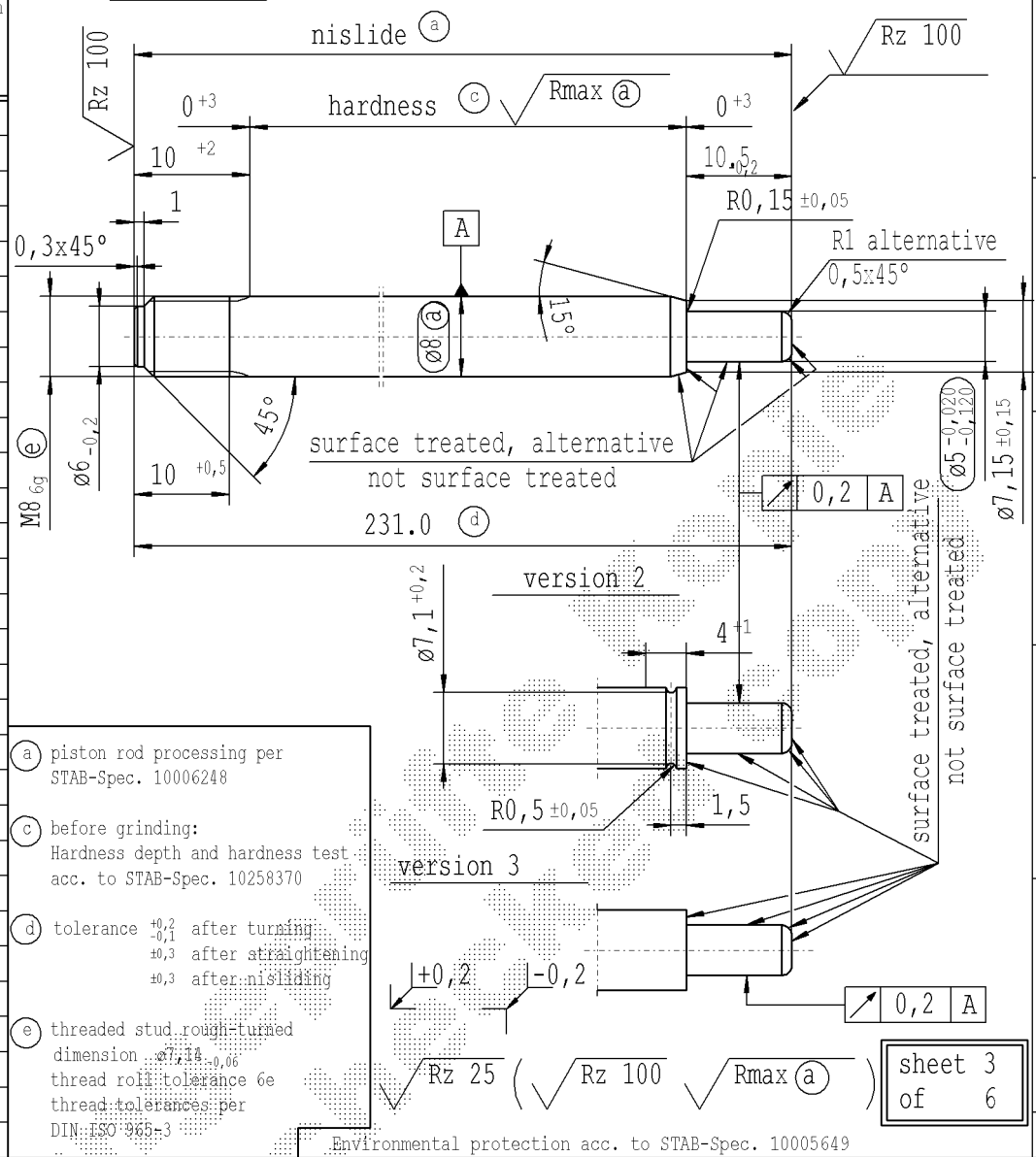


CONFIDENTIAL!
Intended for internal use only

Ident. Doc.: SN 53.11=004/30=mm 15/02/2023 - 11:45

supp. No.	material no.				A	B	C	D	version
	surface treatment processing acc. to STAB-Spec. 10006248								
	table IV Nislid black	table VIII Nislid black	table X Nislid G	table V Nislid bright					
208	8084XT		8084XT		228.0	6	9	3	
209	6552YY		6552YY		237.0	10	10.5	1	
211	7349YB		7349YB		213.0	8	10.5	1	
227	003996		003996		234.0	6	10.5	1	
232	003932		003932		291.0	6	10.5	1	
233	009116		009116		229.5	6	10.5	1	
234	009488		009488		222.0	6	10.5	1	
236	018766		018766		288.0	10	10.5	1	
238	020583		020583		276.0	10	10.5	1	
239	020246		020246		227.5	10	11	1	
240	025599		025599		250.0	10	10.5	1	
243	352714		352714		258.0	10	10.5	1	
245	051864		051864		345.0	6	10.5	1	
246	717957		717957		126.0	6	10.5	1	
247	747115		747115		209.0	6	10.5	1	
248	755480		755480		255.0	6	10.5	1	
249	757392		757392		212.0	10	10.5	1	
251	457689		457689		330.0	6	22.5	3	
253	243308		243308		147.0	25	10.5	1	
256	545883		545883		225.0	10	10.5	1	
258			815715		564.0	10	10.5	1	
259	577672		577672		231.0	10	10.5	1	
260	314535		314535		162.0	6	10.5	1	
261	312385		312385		339.0	6	23.5	3	
263	503824		503824		156.0	10	10.5	1	
264	513862		513862		273.0	6	10.5	1	
265	197903		197903		296.0	8	10.5	1	
266	783932		783932		267.0	11	10.5	1	
267			928050		246.0	10	10.5	1	
268	037776		037776		309.0	10	10.5	1	

version 1



- (a) piston rod processing per STAB-Spec. 10006248
- (c) before grinding:
Hardness depth and hardness test acc. to STAB-Spec. 10258370
- (d) tolerance $\pm 0,2$ after turning;
 $\pm 0,3$ after straightening;
 $\pm 0,3$ after nisliding
- (e) threaded stud rough-turned dimension $\varnothing 7,14 \pm 0,06$ thread roll tolerance 6e thread-tolerances per DIN: ISO 965-3

Environmental protection acc. to STAB-Spec. 10005649

DE: X	EN: X	ES:	IT:	PR:	FR:	RO: X	CAD created document handwritten changes not permitted	
new	Tab. V	surface treated ...	$0,5 \times 45^\circ$ alternative R1	R1 alternative $0,5 \times 45^\circ$	rom. version created	© = acc. STAB-Spec. 10238270		
old	-	-	$0,5 \times 45^\circ$	$0,5 \times 45^\circ$ alternative R1	-	© = RHT 0,4 ...		
Field	-	B-E/1-3	E/1-3	E/1	-	B-C 4-5		
Date/Name	15.03.2005 Donat	23.05.2006 Schönberger	26.05.2008 Hein	19.03.2009 Hein	27.04.2016 Jablonski	08.05.2019 Jablonski		
Chg. No.	542237	550621	565549	571413	636357	678350		
Rev.	29	30	31	32	33	34		

Material:	mat. no. 010731
Edge tolerances acc. to DIN ISO 13715	
Surface finish acc. to DIN EN ISO 1302	
Regulations:	SN 53.11-08/30
STABILUS	

All dimensions are in mm	Identification of important characteristics
Scale: (Original DIN A3) 2:1	Dimensions without tolerances DIN ISO 2768-mK
We reserve all rights to this document, to any patents or patent registrations related hereto, and to the duplication, retransmission by third parties and misc. use. Any use of this document is not permitted without the written consent of STABILUS.	
PISTON ROD	

Drawn by	Date	Name
Checked	01.04.1992	Kirsch
Checked	08.05.2019	Milles
Document No.:	10003759	
Material No.:		