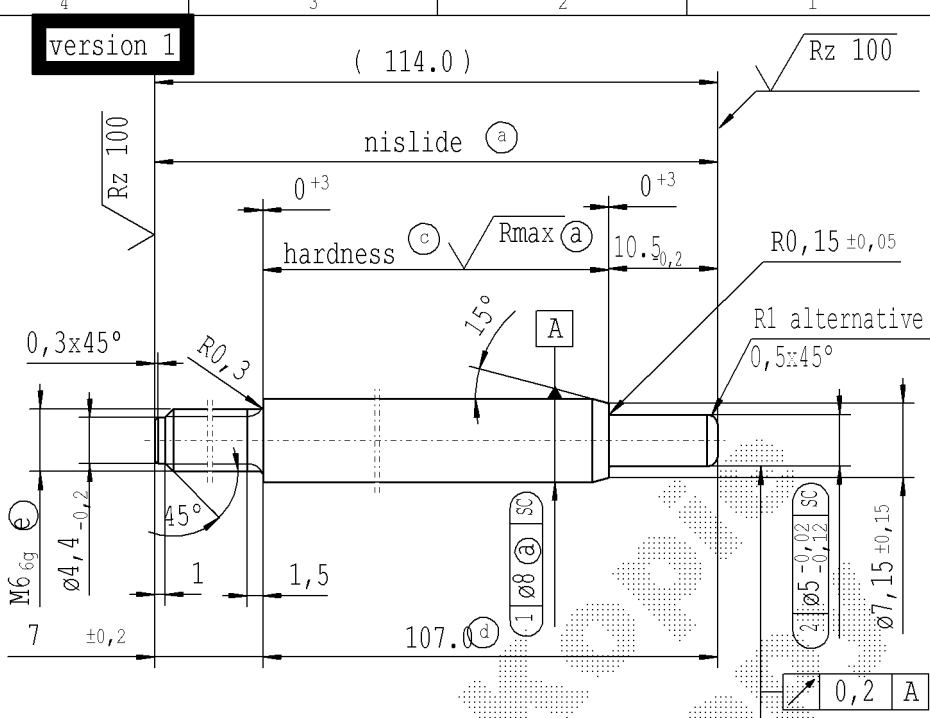


The print-out is not subject to the modification service.

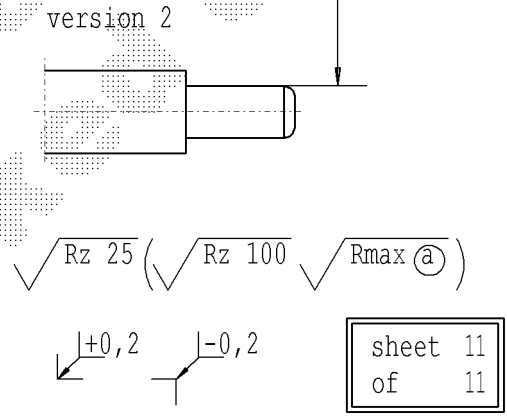
CONFIDENTIAL! Intended for internal and supplier use

Ident. Doc.: SN 53.11=00402mm: 24/10/2023 - 10:34

supp. No.	material no.				A	B	C	E	F
	surface treatment processing acc. to STAB-Spec. 10006248				overall length	stud length end-fitting side	stud length piston side	length without end-fitting stud	version
	table IV Nislide black for STUS / STMX table IV acc. STAB-Spec. 10210309	table V Nislide light	table VIII Nislide black polished	table X Nislide "G"	KOST without surface treatment only for STUS / STMX				
444	816953			816953	93.0	10	10.5	83.0	1
445	850413			850413	372.0	7	10.5	365.0	1
446	875511			875511	189.0	10	10.5	179.0	1
447	512473			512473	114.0	7	10.5	107.0	1



- (a) piston rod processing per STAB-Spec. 10006248
- (c) before grinding: Hardness depth and hardness test acc. to STAB-Spec. 10238370
- (d) tolerance $\pm 0,1$ after turning $\pm 0,3$ before straightening $\pm 0,3$ before nisliding
- (e) threaded stud rough-turned dimension $\phi 5,29_{-0,06}^{+0,02}$ thread roll tolerance $\phi 5,29_{-0,06}^{+0,02}$ thread tolerances per DIN ISO 965-3



AIAG CQI-standards acc. to STAB-Spec. 10027692									
DE: X	EN: X	ES: X	IT: X	PR: X	FR:	RO: X	CAD created document handwritten changes not permitted		
new	Creation of romanian drawing				acc. STAB-Spec. 10258370		$\phi 5_{-0,12}^{+0,02}$ no technical change, no new first sample required		
old	-				RHT 0,4 0,7 mm		$\phi 5_{-0,12}^{+0,02}$		
Field	-				C 3-4		-		
Date/Name	07.04.2016 YaMueller				08.05.2019 Jablonski		09.10.2023 Jablonski		
Chg. No.	635494				678350		727188		
Rev.	44				45		45		

Material: mat.no: 010731		All dimensions are in mm		Marking of special characteristics according to STAB-Spec. 10270932		Date: 29.04.1992		Name: Kirsch	
Edge tolerances acc: no DIN ISO 13715		Scale: (Original DIN A3) 2:1		Dimensions without tolerances DIN ISO 2768-mK		Checked: 09.10.2023		Klinkner	
Surface finish: DIN EN ISO 1302		We reserve all rights to this document, to any patents or patent registrations related hereto, and to the duplication, retransmission by third parties and misc. use. Any use of this document is not permitted without the written consent of STABILUS.		Document No.: 10003766		Material No.:			
Regulations:		STABILUS		PISTON ROD					