

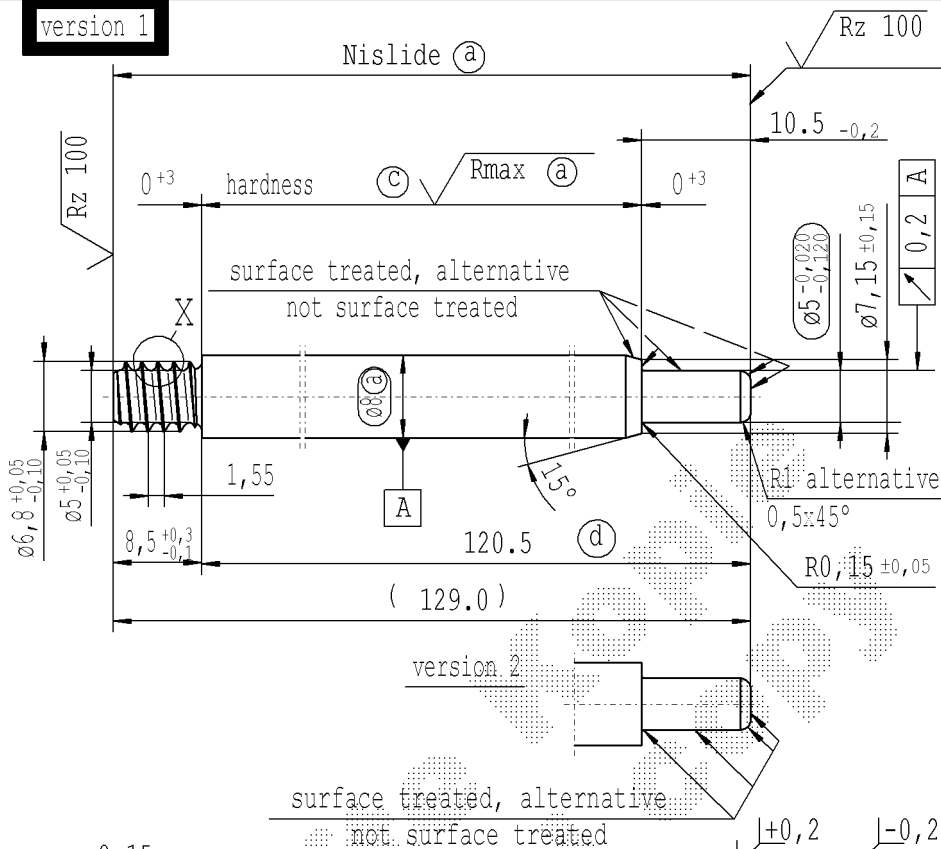
The print-out is not subject to the modification service.

Intended for internal and supplier use

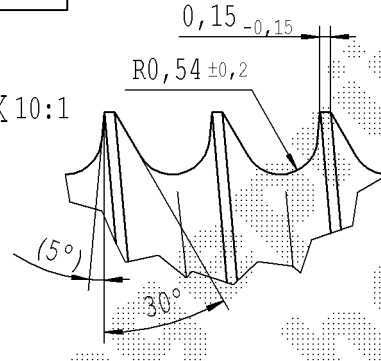
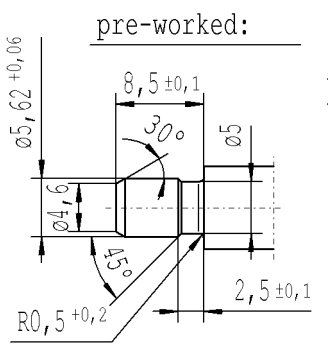
Ident. Doc.: SN 2663C8 serial datum: 14/11/2022 - 7:16

supp No.	material no.				KOST without surface treatment only for STUS / STMX	A	B	E	F	G
	table IV Nislide black for STUS / STMX table IV acc. STAB-Spec. 10210309	table V Nislide light	table VIII Nislide black polished	table X Nislide "G"		overall length	stud length piston side	length without endfitting stud	version	only tab. IV allowable
172	0214NQ			0214NQ		284.0	10.5	275.5	1	
173	0589NJ			0589NJ		270.5	10.5	262.0	1	
174	0595NX			0595NX		246.0	10.5	237.5	1	
175	0605NQ			0605NQ		186.0	10.5	177.5	1	
176	0611ND			0611ND		84.0	10.5	75.5	1	
177	0613NU			0613NU		309.0	10.5	300.5	1	
178	0617NA			0617NA		303.0	10.5	294.5	1	
179	0637NP			0637NP		153.0	10.5	144.5	1	
180	0647NJ			0647NJ		267.0	10.5	258.5	1	
181	0656NI			0656NI		129.0	10.5	120.5	1	
182	0692NE			0692NE		213.0	10.5	204.5	1	
183	0699NX			0699NX		207.0	10.5	198.5	1	
184	0721NR			0721NR		159.0	10.5	150.5	1	
185	0783NZ			0783NZ		306.0	10.5	297.5	1	
186	0802NR			0802NR		339.0	10.5	330.5	1	
187	0817NN			0817NN		336.0	10.5	327.5	1	
188	0844NK			0844NK		168.0	10.5	159.5	1	

version 1



- (a) piston rod processing acc. STAB-Spec. 10006248 for piston rods without surface treatment grinding dimension $-0,046$ / $-0,057$ Rmax after grinding $\leq 1,5 \mu m$
- (c) before grinding: Hardness depth and hardness test acc. to STAB-Spec. 10258370
- (d) tolerances: $+0,2$ / $-0,1$ after turning; $+0,3$ after straightening; $+0,3$ after nisliding



* CUSTOMER DRAWING AVAILABLE

sheet 11 of 40

DE: X					EN: X					ES: X					IT: X					PR: X					FR: X					RO: X					Material: mat.no.: 010731					All dimensions are in mm					Marking of special characteristics according to STAB-Spec. 10270932					Date: 08.11.1999					Name: Mohrs				
new					= acc. STAB-Spec. 10258370					FN parts removed-					-					(5%) no technical change, no new first sample required					Surface finish: DIN EN ISO 1302					Scale: (Original DIN A3) 2:1					Dimensions without tolerances DIN ISO 2768 mK					Checked: 31.03.2021					Klinkner														
old					= RHT 0,4 0,7 mm					Pos. number changed					AG 008/14					5°					Edge tolerances acc. to DIN ISO 13715					We reserve all rights to this document, to any patents or patent registrations related hereto, and to the duplication, retransmission by third parties and misc. use. Any use of this document is not permitted without the written consent of STABILUS.					Document No.: 10001245					Material No.:																			
Field					B 7-8					-					B2					B/4-5					Registries: Zschang: dt.: Nr. v. 17.12.1998					STABILUS					PISTON ROD																								
Date/Name					17.04.2019 Donat					22.04.2020 Höfer					31.03.2021 Hein																																												
Chg. No.					677953					688065					696924																																												
Rev.					80					81					81																																												