

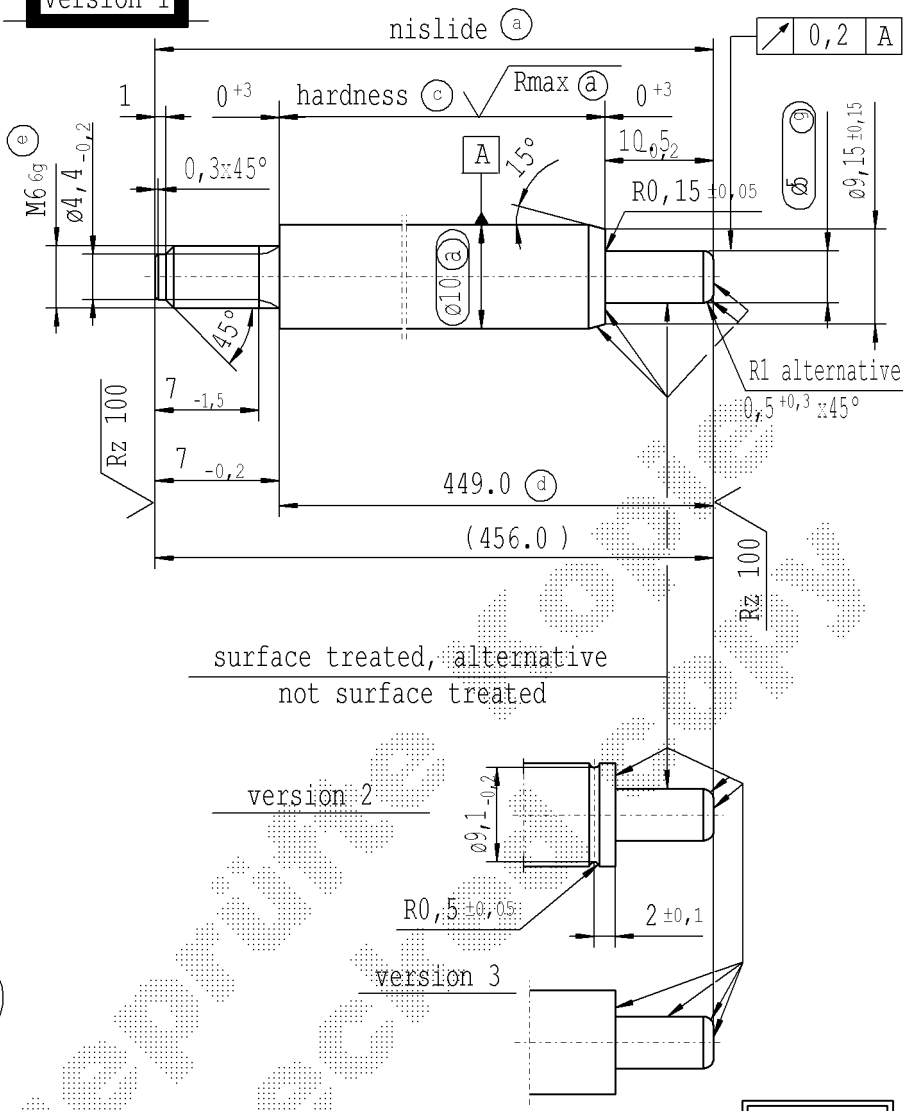
The print-out is not subject to the modification service.

Intended for internal and supplier use

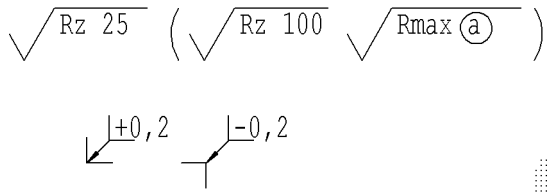
Ident. Doc.: SN 53.11#1402mm 16/02/2023 - 12:11

supp No.	material no.				A	B	C	D	E	F
	table IV Nislide black	table VIII Nislide black	table V Nislide light	table X Nislide "G"	overall length	stud length end-fitting side	stud length piston side	stud ø piston side	length without end-fitting stud	version
130	450056			450056	456.0	7	10.5	5	449.0	1
131	128124			128124	183.0	7	12.5	8	176.0	3
133	502158			502158	309.0	7	22.5	5	302.0	3
134	069570			069570	384.0	7	10.5	5	377.0	1
135	830785			830785	411.0	7	10.5	5	404.0	1
136	707459			707459	249.0	10	10.5	5	239.0	1
137	422815			422815	429.0	7	10.5	5	422.0	1
138	598002			598002	528.0	7	10.5	5	521.0	1
139	611386			611386	417.0	7	22.5	5	410.0	3
140	231139			231139	150.0	7	10.5	5	143.0	1
141	436440			436440	630.0	7	22.5	5	623.0	3
142	936906			936906	333.0	7	22.5	5	326.0	3
143	981599			981599	258.0	10	10.5	5	248.0	1
144	984706			984706	381.0	10	10.5	5	371.0	1
145	052846			052846	147.0	10	10.5	5	137.0	1
146	213932			213932	303.0	7	10.5	5	296.0	1
147	336778			336778	153.0	7	12.5	8	146.0	3

version 1



- (a) piston rod processing per STAB-Spec. 10006248
- (c) before grinding: Hardness depth and hardness test acc. to STAB-Spec. 10258370
- (d) tolerance $\begin{matrix} +0,2 \\ -0,1 \\ +0,3 \text{ after straightening} \\ +0,3 \text{ after nisliding} \end{matrix}$
- (e) threaded stud rough-turned dim. $\phi 5,29_{-0,06}$
thread roll tolerance 6e
thread tolerances acc. to DIN ISO 965-3
- (g) stud $\phi 5_{-0,020}^{-0,120}$ $\phi 8$ d12 $[-0,040]^{-0,190}$



sheet 7
of 11

DE: X										EN: X										ES: X										IT: X										PR: X										FR: X										RO: X										Material: mat. no. 010715										All dimensions are in mm										Identification of important characteristics										Date: 08.04.1999										Name: Jablonski																																																	
new										version 3										B _{-0,2}										Nislide Tab.V										version 3										Supplier / KOST w/o surface										rom. version created										© = acc. STAB-Spec. 10258370										Scale: 2:1										Dimensions without tolerances										Checked: 08.05.2019										Milles																																																	
old										version 2										B _{+0,2}										-										version 1										internal / -										-										© = RHT 0,4										Edge tolerances acc. to DIN ISO 13715										We reserve all rights to this document, to any patents or patent registrations related hereto, and to the duplication, retransmission by third parties and misc. use. Any use of this document is not permitted without the written consent of STABILUS.										Document No.: 10003852																																																											
Field										Pos.54										D4										A-F / 7										Pos.88										B 7-8										Surface finish: DIN EN ISO 1302										Regulations: SW 55.10-10/42 v. 08.04.92										Material No.:																																																																															
Date/Name										09.02.2011 H8										21.02.2011 H8										07.09.2011 H8										07.01.2013 H8										19.05.2014 Donat										20.04.2016 Jablonski										08.05.2019 Jablonski										STABILUS										PISTON ROD																																																																					
Chg. No.										586867										587105										590869										601232										613650										636361										678351										Rev.										25										26										27										28										29										30										31									