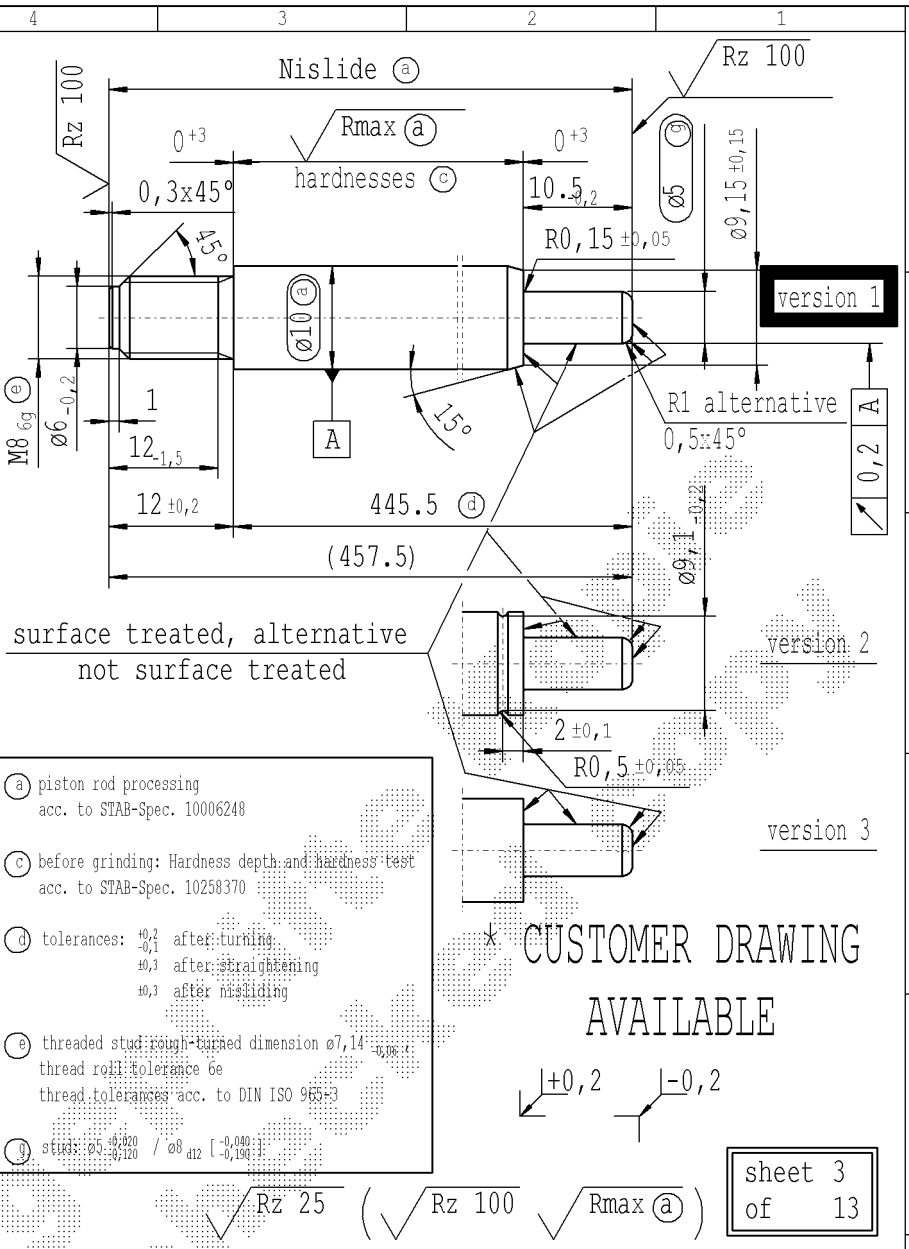


The print-out is not subject to the modification service.

Intended for internal and supplier use

Ident. Doc.: SN 53.11.14/32mm. 11/2/2022 - 19151

supp No.	material no.				A	B	C	D	E	F
	surface treatment processing acc. to STAB-Spec. 10006248				overall length	stud length piston side	stud length end-fitting side	stud ø piston side	length without end-fitting stud	version
	table IV Nislid black for STUS / STMX table IV acc. STAB-Spec. 10210309	table V Nislid light	table VIII Nislid black	table X Nislid "G"	KOST without surface treatment only for STUS / STMX					
91	1887GS			1887GS	294.0	10.5	25	5	269.0	1
92	3041GE			3041GE	231.0	10.5	12	5	219.0	1
93	3473GC			3473GC	309.0	10.5	10	5	299.0	1
94	3482GB			3482GB	357.0	10.5	10	5	347.0	1
99	8961GY			8961GY	249.0	10.5	12	5	237.0	1
101	8976GU			8976GU	447.0	12.5	12	8	435.0	3
103	1084HE			1084HE	297.0	10.5	12	5	285.0	1
104	1297HX			1297HX	253.5	10.5	12	5	241.5	1
106	643548			643548	457.5	10.5	12	5	445.5	1
107	186058			186058	256.5	10.5	12	5	244.5	1
109	4566BZ			4566BZ	156.0	12.5	10	8	146.0	3
111	869643	018296		869643	465.0	10.5	12	5	453.0	1
112	3083EI			3083EI	453.0	10.5	12	5	441.0	1
113	2538EK			2538EK	441.0	10.5	12	5	429.0	1
114	1746CQ			1746CQ	405.0	10.5	12	5	393.0	1
115	194234			194234	375.0	10.5	12	5	363.0	1
116	288861			288861	330.0	10.5	12	5	318.0	1
117	643564			643564	311.0	10.5	12	5	299.0	1
118	861529			861529	273.0	10.5	12	5	261.0	1
119	329428			329428	228.0	10.5	12	5	216.0	1
120	643556			643556	213.5	10.5	12	5	201.5	1
125	749621			749621	465.0	10.5	12	5	453.0	2
133	242551			242551	253.5	10.5	12	5	241.5	1
134	9188IR			9188IR	303.0	10.5	12	5	291.0	1
135	9422II			9422II	477.0	10.5	12	5	465.0	1
136	8599IN			8599IN	432.0	10.5	12	5	420.0	1



- (a) piston rod processing acc. to STAB-Spec. 10006248
- (b) before grinding: Hardness depth and hardness test acc. to STAB-Spec. 10258370
- (c) tolerances: $\begin{matrix} +0,2 \\ -0,1 \end{matrix}$ after turning; $\begin{matrix} +0,3 \\ -0,1 \end{matrix}$ after straightening; $\begin{matrix} +0,3 \\ -0,1 \end{matrix}$ after milling
- (d) threaded stud: rough-turned dimension $\begin{matrix} +0,14 \\ -0,06 \end{matrix}$; thread roll tolerance 6e; thread tolerances acc. to DIN ISO 965-3
- (e) studs: $\begin{matrix} \phi 5 \pm 0,020 \\ \phi 7 \pm 0,120 \end{matrix}$ / $\begin{matrix} \phi 8 \pm 0,040 \\ \phi 12 \pm 0,190 \end{matrix}$

*** CUSTOMER DRAWING AVAILABLE**

sheet 3 of 13

AIAG CQI-standards acc. to STAB-Spec. 10027692										
DE: X	EN: X	ES: X	IT:	PR:	FR:	RO: X	CAD created document handwritten changes not permitted			Material:
new	0,5x45° alternative R1	R1 alternative 0,5x45°	Supplier / KOST w/o surface	rom. version created	(c) = acc. STAB-Spec. 10258370	mat. no.: 010715				All dimensions are in mm
old	0,5x45°	0,5x45° alternative R1	internal / -	-	(c) = RHT 0,4 ... 0,7 mm	Edge tolerances acc. to DIN ISO 13715				Identification of important characteristics
Field	E1	E/1	-	-	C 3-4	Surface finish: DIN EN ISO 1302				Scale: (Original DIN A3) 2:1
Date/Name	26.5.08 KeDeh.	11.02.2009 Hein	19.05.2014 Donat	20.04.2016 Jablonski	08.05.2019 Jablonski	Registers: Zchng.-pl.: Nr. v. 08.04.1999				Dimensions without tolerances DIN ISO 2768-mK
Chg. No.	565532	571068	613650	636361	678351	STABILUS				We reserve all rights to this document, to any patents or patent registrations related hereto, and to the duplication, retransmission by third parties and misc. use. Any use of this document is not permitted without the written consent of STABILUS.
Rev.	41	42	43	44	45	PISTON ROD				Document No.: 10003846
										Material No.:

Environmental protection acc. to STAB-Spec. 10005649		
Drawn by	Date	Name
Checked	25.10.1999	Mohrs
Checked	08.05.2019	Milles