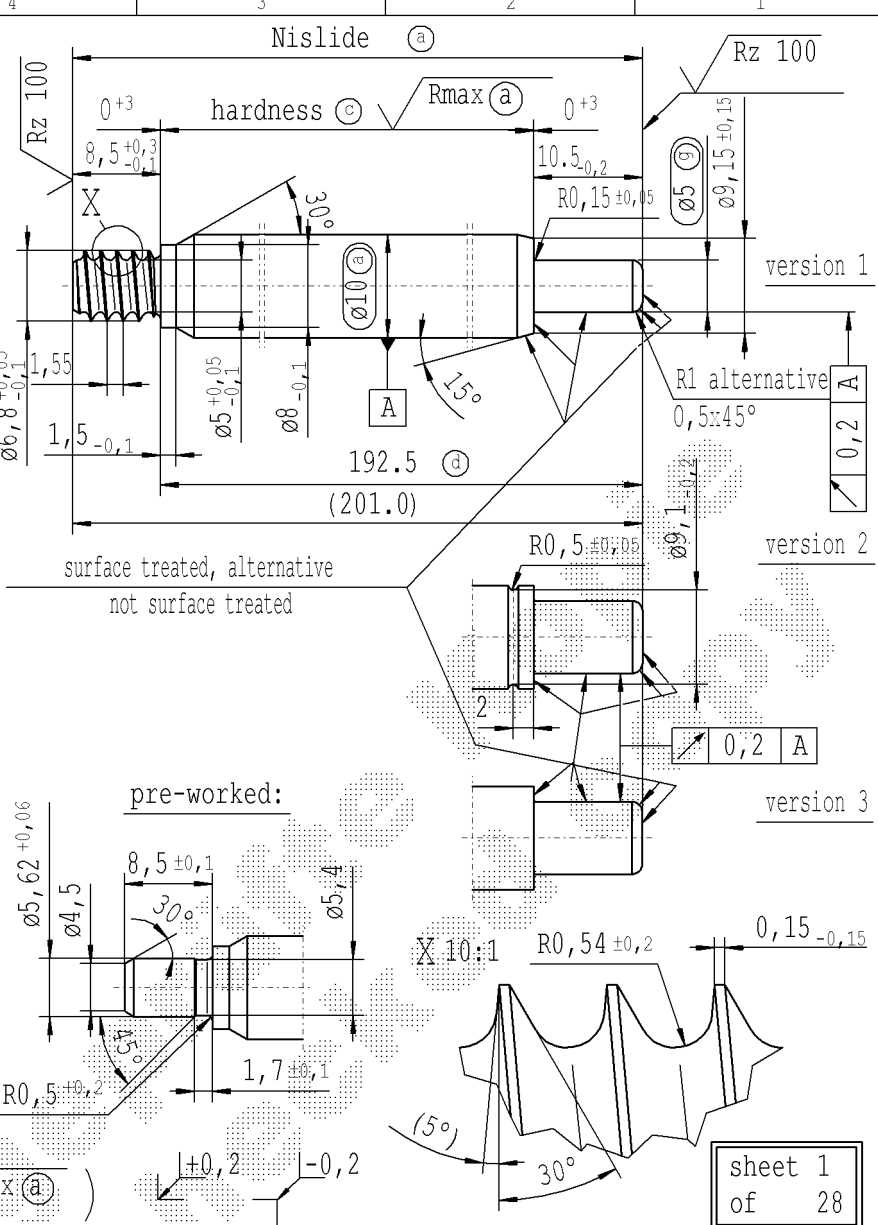


The print-out is not subject to the modification service.

Intended for internal and supplier use

Ident. Doc.: SN\_9879C@res11.docx: 30/11/2021 - 19:18

supp No.	material no.				KOST without surface treatment only for STUS / STMK	A	B	C	E	F	G
	surface treatment processing acc. to STAB-Spec. 10006248					overall length	stud length	stud ø piston side	length without end-fitting stud	version	only tab. IV allowable
	table IV Nislide black for STUS / STMK table IV acc. STAB-Spec. 10210309	table V Nislide light	table VIII Nislide black	table X Nislide "G"							
1	6660BF			6660BF	480.0	11.5	5	471.5	1		
2	3284ET			3284ET	270.0	10.5	5	261.5	1		
3	8917MA			8917MA	201.0	10.5	5	192.5	1		
4	3253FF			3253FF	471.0	10.5	5	462.5	1		
5	3262FE			3262FE	402.0	10.5	5	393.5	1		
6	3265FQ			3265FQ	450.0	10.5	5	441.5	1		
7	5697FZ			5697FZ	279.0	10.5	5	270.5	1		
8	3391FL			3391FL	150.0	10.5	5	141.5	1		
9	3553FL			3553FL	300.0	10.5	5	291.5	1		
10	3597FV			3597FV	153.0	10.5	5	144.5	1		
11	3601FR			3601FR	99.0	10.5	5	90.5	1		
13	3647FR			3647FR	357.0	10.5	5	348.5	1		
14	4262FX			4262FX	273.0	12.5	8	264.5	3		
15	4075FQ			4075FQ	261.0	12.5	8	252.5	3		
16	4078FB			4078FB	393.0	12.5	8	384.5	3		
17	371834			371834	354.0	10.5	5	345.5	1		



- (a) piston rod processing acc. to STAB-Spec. 10006248
- (c) before grinding:  
Hardness depth and hardness test acc. to STAB-Spec. 10258370
- (d) tolerances:  
+0,2 / -0,1 after turning  
+0,3 after straightening  
+0,3 after nisliding
- (g) stud:  $\phi 5_{-0,020}^{+0,012}$  /  $\phi 8_{d12} [-0,130]$

$\sqrt{Rz 25}$  ( $\sqrt{Rz 100}$   $\sqrt{Rmax: (a)}$ )

AIAG CQI-standards acc. to STAB-Spec. 10027892					Environmental protection acc. to STAB-Spec. 10005649						
DE: X	EN: X	ES: X	IT: X	FR: X	RO: X	Material: mat.No. 010715					
new	position of angle 5° corrected 8,5 $\pm 0,3$	⊙ = acc. STAB-Spec. 10258370		(5°) no technical change, no new first sample required:		All dimensions are in mm					
old	wrong position of angle 5°	⊙ = RHT 0,4 ... 0,7 mm		5°		Scale: (Original DIN A3) 2:1					
Field	B-C/1-2 F/3-4		B-C 7-8		B/2		Marking of special characteristics according to STAB-Spec. 10270932				
Date/Name	28.01.2019 Hein		10.05.2019 Jablonski		31.03.2021 Hein		Dimensions without tolerances DIN ISO 2768-mK				
Chg. No.	675145		678485		696924		We reserve all rights to this document, to any patents or patent registrations related hereto, and to the duplication, retransmission by third parties and misc. use. Any use of this document is not permitted without the written consent of STABILUS.				
Rev.	33		34		34		Document No.: 10004711				
						<b>STABILUS</b>		PISTON ROD		Material No.:	

sheet 1 of 28