

The print-out is not subject to the modification service.

Intended for internal and supplier use

Brevé d'invention: 27/10/2023 - 10.20

Ident. Doc.:

supp No.	material no.			A	B
	version 1	version 1	version 2	overall length	thread length
64	507930	507930	507930	66.0	8.5
65	508408	508408	508408	261.0	26
66	508886	508886	508886	121.5	6
67	509364	509364	509364	180.0	6
68	509842	509842	509842	363.0	13
69	510320	510320	510320	168.0	6
70	510798	510798	510798	177.0	6
71	511754	511754	511754	81.0	6
72	512710	512710	512710	153.0	6
73	513188	513188	513188	195.0	10
74	525138	525138	525138	60.0	8.5
75	530396	530396	530396	150.0	6
76	530874	530874	530874	84.0	6
77	531830	531830	531830	138.0	10
78	537805	537805	537805	274.0	6
79	538283	538283	538283	76.5	6
80	337524	337524	337524	339.0	16
81	746455	746455	746455	294.0	10
XX	XXXX	XXXX	XXXX	222	6

(c) before grinding:
Hardness depth and hardness test acc. to STAB-Spec. 10258370

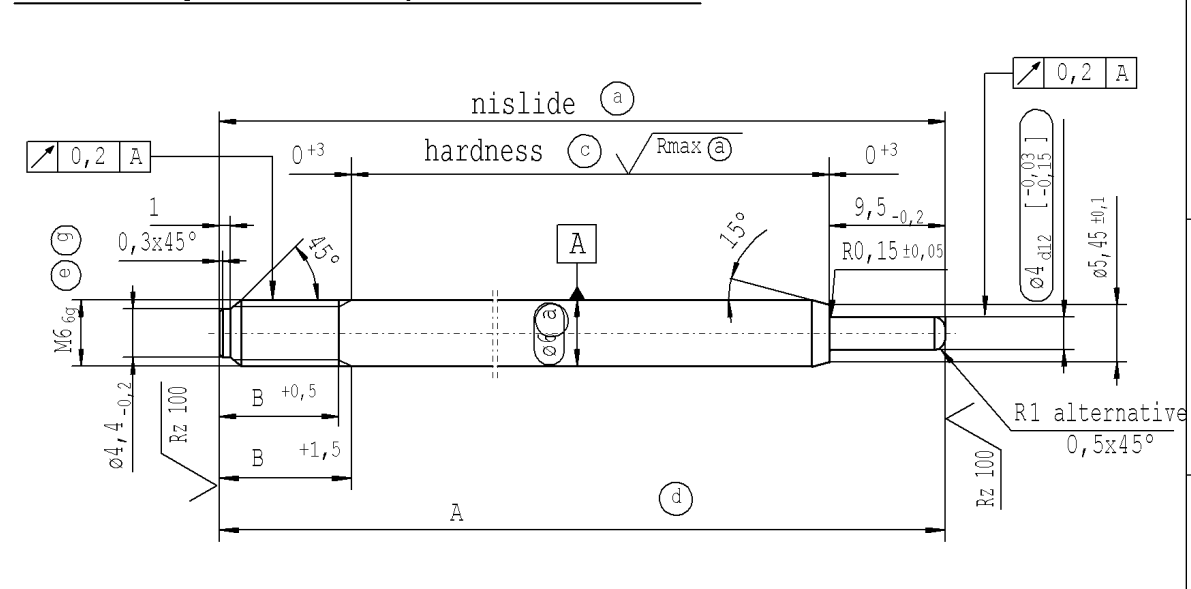
(d) tolerances: $\begin{matrix} +0,2 \\ -0,1 \end{matrix}$ after turning;
 $\begin{matrix} +0,2 \\ -0,2 \end{matrix}$ after straightening;
 $\begin{matrix} +0,2 \\ -0,2 \end{matrix}$ after nisliding

(e) threaded stud rough-turned dim. $\phi 5,29_{-0,06}$
thread roll tolerance 6e
acc. to DIN ISO 965-3

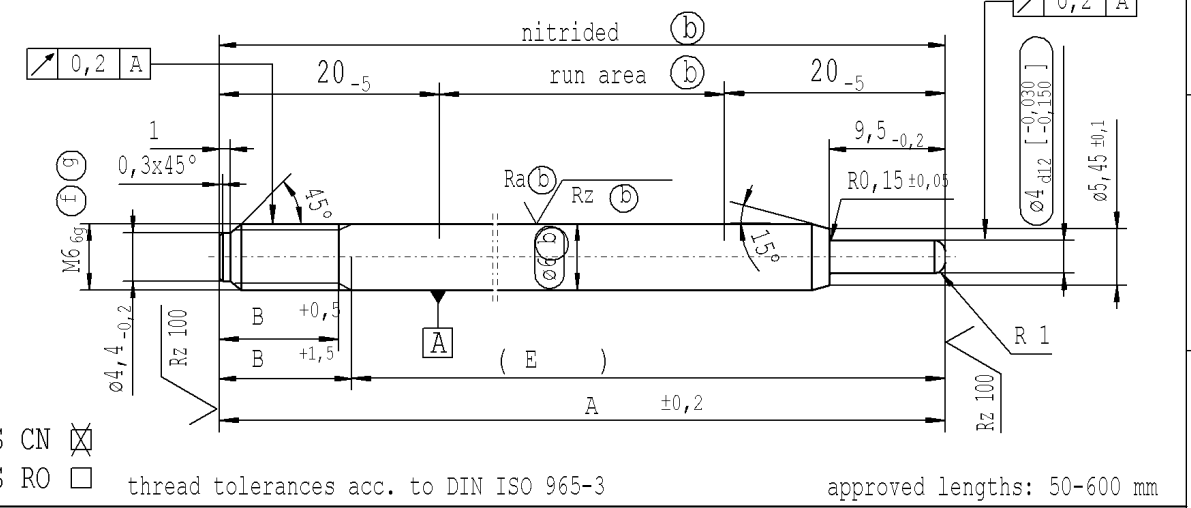
(f) rough-turned dim. thread roll tolerance 6e

(g) In the final condition, the actual profile of the thread must not exceed the maximum material limit for the tolerance zone position h at any point

version 1 (only self-manufacturing) * material: 010707



version 2 (only external production) * material: 1.1193 S45C JISG 4051



ZS CN thread tolerances acc. to DIN ISO 965-3 approved lengths: 50-600 mm

ZS RO

AIAG CQI-standards acc. to STAB-Spec. 10027692

DE: X	EN: X	ES:	IT:	PR:	FR:	RO: X	CAD created document; handwritten changes not permitted		Material: *	All dimensions are in mm		Marking of special characteristics according to STAB-Spec. 10270932		Date	Name	
new	DE: Vordrehmaß ... $\phi 5,29$			Tab X deleted, no technical change, no new first sample required	ZS CN / ZS RO; M6 6g	(f) (g)	Tab. XVI; Tab. X			Scale: (Original DIN A3) 2:1		Dimensions without tolerances DIN ISO 2768-mK		Drawn by	06.06.2012	Donat
old	DE: Vordrehmaß ... $\phi 5,19$						Tab. IV; Tab. VIII		Edge tolerances acc. to DIN ISO 13715					Checked	11.10.2022	Klinkner
Field	D4						B-C/5; E-F/5, -		Surface finish DIN EN ISO 1302					Document No.:		10190070
Date/Name	10.05.2021 Jablonski			02.06.2021 Jablonski			11.10.2022 Hein		Replaces:					Material No.:		
Chg. No.	698020			697821			712940									
Rev.	10			10			11		STABILUS							



PISTON ROD