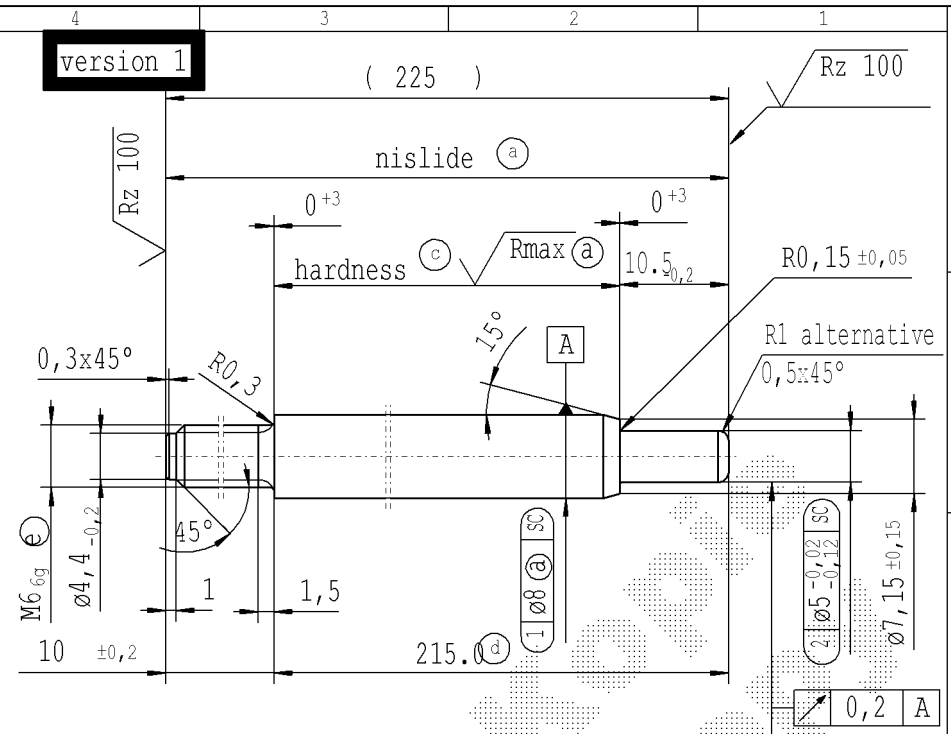


The print-out is not subject to the modification service.

CONFIDENTIAL! Intended for internal and supplier use

Ident. Doc.: SN 53.1.1=00442mm: 24/10/2023 - 10:34

supp No.	material no.				KOST without surface treatment only for STUS / STMX	A	B	C	E	F
	table IV Nislide black for STUS / STMX table IV acc. STAB-Spec. 10210309	table V Nislide light	table VIII Nislide black polished	table X Nislide "G"		overall length	stud length end-fitting side	stud length piston side	length without end-fitting stud	version
1	341242			341242	159.0	10	10.5	149.0	1	
11	8454DI			8454DI	276.0	10	10.5	266.0	1	
13	9559DW			9559DW	279.0	7	10.5	272.0	1	
16	784494			784494	285.0	6	10.5	279.0	1	
19	493341			493341	111.0	10	10.5	101.0	1	
22	9329FT			9329FT	156.0	10	10.5	146.0	1	
23	0139GO			0139GO	273.0	10	10.5	263.0	1	
25			2741QE		277.0	7	10.5	270.0	1	
30	1438HN			1438HN	159.0	10	10.5	149.0	1	
31	498173			498173	129.0	10	10.5	119.0	1	
32	1506HH			1506HH	197.5	10	10.5	187.5	1	
33	1426HC			1426HC	229.5	10	10.5	219.5	1	
35	7213HQ			7213HQ	223.5	10	10.5	213.5	1	
38	8285HK			8285HK	337.0	10	10.5	327.0	1	
39	4994HT			4994HT	134.0	7	10.5	127.0	1	
40	4331HE			4331HE	191.5	10	10.5	181.5	1	
41	4701IR			4701IR	99.0	7	10.5	92.0	1	
43	399507			399507	120.0	6	10.5	114.0	1	
48	4939LO			4939LO	207.0	7	10.5	200.0	1	
50	600180			600180	99.0	6	10.5	93.0	1	
51		006526			315.0	10	10.5	305.0	1	
60	4198AC			4198AC	297.0	10	10.5	287.0	1	
64	246352			246352	225	10	10.5	215.0	1	
66		4095XN			339.0	10	10.5	329.0	1	
67	185833			185833	310	10	10.5	300.0	1	
68	2865EN			2865EN	279.0	10	10.5	269.0	1	



version 1

(225)

Rz 100

nislide (a)

hardness (c) Rmax (a)

0⁺³ 0⁺³

10.5_{-0,2}

R0,15 ±0,05

R1 alternative

0,3x45°

R0,3

15°

A

0,5x45°

45°

M6_{6g}

ø4,4_{-0,2}

1 1,5

10 ±0,2

215.0 (d)

1 ø8 (SC)

2 ø5_{-0,02 -0,12} (SC)

ø7,15 ±0,15

0,2 A

version 2

√ Rz 25 (√ Rz 100 √ Rmax (a))

+0,2 -0,2

sheet 1 of 11

- (a) piston rod processing per STAB-Spec. 10006248
- (c) before grinding: Hardness depth and hardness test acc. to STAB-Spec. 10298370
- (d) tolerance +0,2 after turning ± 0,3 before straightening ± 0,3 before nisliding
- (e) threaded stud rough-turned dimension ø5,29_{-0,06} thread roll tolerance 6s thread tolerances per DIN ISO 965-3

A					AIAG CQI-standards acc. to STAB-Spec. 10027692					Environmental protection acc. to STAB-Spec. 10005649									
DE: X	EN: X	ES: X	IT: X	PR: X	FR:	RO: X	CRD created document handwritten changes not permitted					Material: mat.no: 010731							
new	Creation of romanian drawing				⊙ = acc. STAB-Spec. 10258370	ø5 _{-0,02 -0,12} no technical change, no new first sample required					All dimensions are in mm								
old	-				⊙ = RHT 0,4 ... 0,7 mm	ø5 _{-0,020}					Scale: (Original DIN A3) 2:1								
Field	-				C 3-4					Marking of special characteristics according to STAB-Spec. 10270932									
Date/Name	07.04.2016 YaMueller				08.05.2019 Jablonski				09.10.2023 Jablonski				Dimensions without tolerances DIN ISO 2768-mK						
Chg. No.	635494				678350				727188				We reserve all rights to this document, to any patents or patent registrations related hereto, and to the duplication, retransmission by third parties and misc. use. Any use of this document is not permitted without the written consent of STABILUS.						
Rev.	44				45				45				Document No.: 10003766						
STABILUS										PISTON ROD									
										Material No.:									

