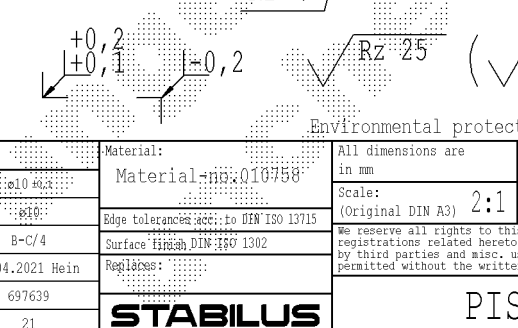
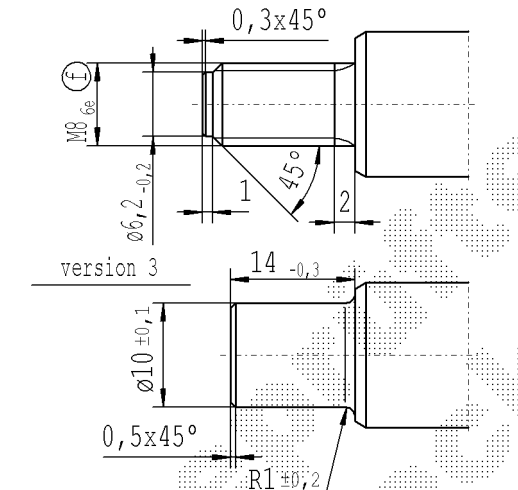
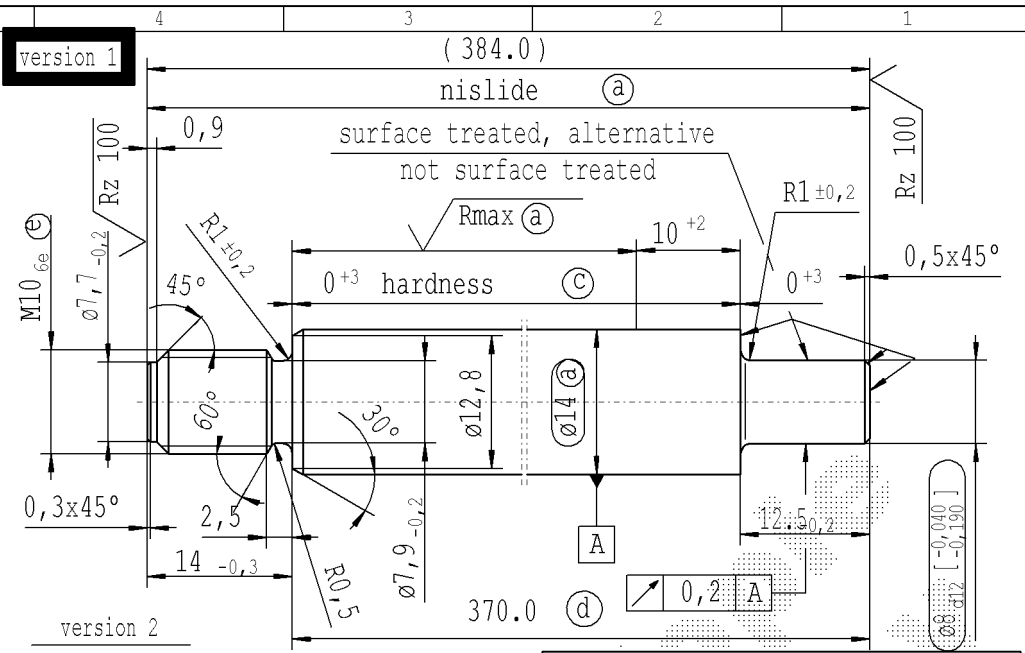


CONFIDENTIAL! Intended for internal use only

supp No.	material no.					A	B	D	E	F	G
	table IV Nislide black	table VIII Nislide black	table V Nislide light	table X Nislide "G"	without surface						
213	316928					243.0	14	22	229.0	12.5	1
214	493787					246.0	14	22	232.0	12.5	1
215	399144					417.0	14	10	403.0	12.5	1
216	797557					267.0	14	10	253.0	12.5	1
217	811410					246.0	14	10	232.0	12.5	1
219	620218					384.0	14	10	370.0	12.5	1
220					625954	384.0	14	10	370.0	12.5	1
221	560470					324.0	10	10	314.0	12.5	2
222	385045					516.0	14	10	502.0	12.5	1
223	455789					459.0	14	10	445.0	12.5	1
224	528684					510.0	8	10	502.0	12.5	2
225	673518					135.0	12	10	123.0	12.5	2
226					676625	135.0	12	10	123.0	12.5	2
227					686185	123.0	12	10	111.0	12.5	2
228	686424					123.0	12	10	111.0	12.5	2
229	582459					312.0	12	22	300.0	12.5	2
230	426154					117.0	14	22	103.0	12.5	1
231					805685	454.5	12	22	442.5	12.5	1
232	805924					454.5	12	22	442.5	12.5	1
233	234238					345.0	10	22	335.0	12.5	2
235	396997					222.0	14	10	208.0	12.5	1
236	452445					345.0	14	22	331.0	12.5	1
237	098724					354.0	14	10	340.0	12.5	1
238					098963	354.0	14	10	340.0	12.5	1
239	253837					198.0	12	22	186.0	12.5	2
240					407036	210.0	12	22	198.0	12.5	2
241	877627					132.0	12	22	120.0	12.5	2
242	417313					207.0	12	10	195.0	12.5	1
243					417552	207.0	12	10	195.0	12.5	1
244	438106					447.0	12	10	435.0	12.5	2



Caution!
for twin-seal dim. D=10 +2

- (a) piston rod processing per STAB-Spec. 10006248
- (c) before grinding: Hardness depth and hardness test acc. to STAB-Spec. 10258370
- (d) tolerance: +0,3 after turning
- +0,3 after straightening
- +0,3 after nisliding
- (f) threaded stud pre-turned dimension Ø8,97 -0,06 thread roll tolerance 6e
- (f) threaded stud pre-turned dimension Ø7,14 -0,06 thread roll tolerance 6e

thread tolerances acc. to DIN ISO 965-3

$+0,2$
 $+0,3$

$\sqrt{Rz 25}$ ($\sqrt{Rz 100}$ $\sqrt{Rmax (a)}$)

sheet 6 of 11

Environmental protection acc. to STAB-Spec. 10005649

Material: Material: 1010758	All dimensions are in mm	Marking of special characteristics according to STAB-Spec. 10270932	Date	Name
Edge tolerances acc. to DIN ISO 13715	Scale: (Original DIN A3) 2:1	Dimensions without tolerances DIN ISO 2768 - mK	Checked	Kirsch
Surface finish acc. to DIN ISO 1302	We reserve all rights to this document, to any patents or patent registrations related hereto, and to the duplication, retransmission by third parties and misc. use. Any use of this document is not permitted without the written consent of STABILUS.		Document No.:	10004582
Regulations:	STABILUS		Material No.:	

PISTON ROD

Ident. Doc.: SN 8979B@erraldatum: 22/3/2023 - 10:26

DE: X	EN: X	ES:	IT:	PR:	FR:	RO: X	CAD created document handwritten changes not permitted				
new	surface treated ...	12,5	Nislide light	w/o surface	rom. version created	© = acc. STAB-Spec. 10258370	Ø10 ±0,3				
old	-	14,5	-	-	-	© = RHT 0,4 ... 0,7 mm	Ø10				
Field	E-F/1-3	Pos.176F	Tab.	7A-F	-	C 1-2	B-C/4				
Date/Name	29.05.2006 Schönberger	26.01.11 Hö	14.04.2011 Hö	27.04.2011 Höfer	20.04.2016 Jablonski	08.05.2019 Jablonski	27.04.2021 Hein				
Chg. No.	550631	586287	588157	588205	636361	678450	697639				
Rev.	15	16	17	18	19	20	21				