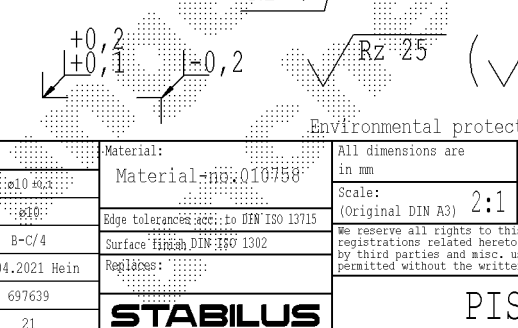
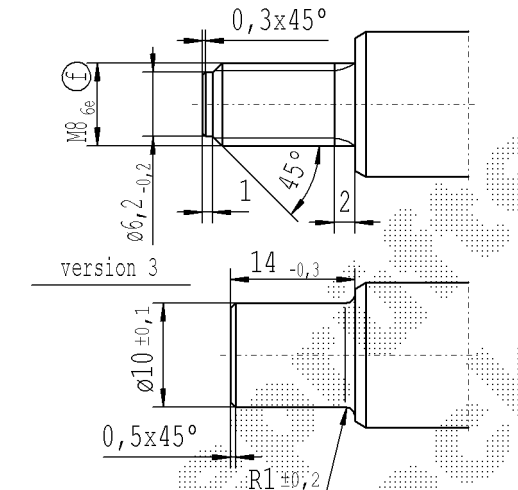
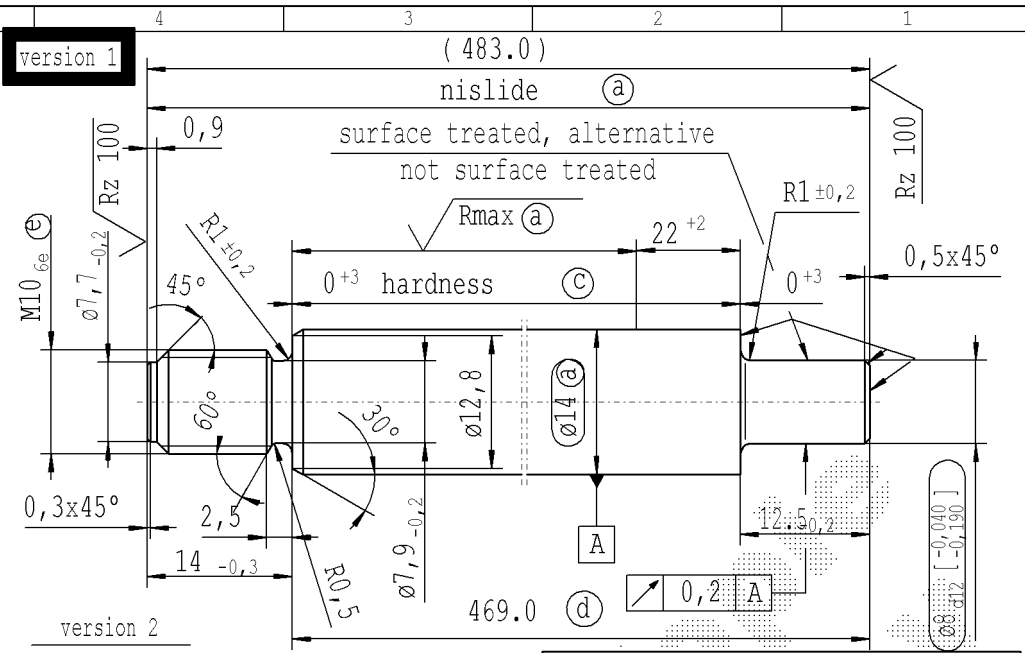


CONFIDENTIAL!
Intended for internal use only

supp No.	material no.					A	B	D	E	F	G	version
	surface treatment processing acc. STAB-Spec. 10006248											
	table IV Nislide black	table VIII Nislide black	table V Nislide light	table X Nislide "G"	without surface	overall length	stud length end-fitting side	length without $\sqrt{R_{max}}$	length without end-fitting stud	stud' length piston side		
F 245					439062	447.0	12	10	435.0	12.5	2	
F 246	450773					447.0	14	10	433.0	12.5	2	
F 247					453402	447.0	14	10	433.0	12.5	2	
F 248	463440					230.0	14	22	216.0	12.5	1	
F 249	617118					441.0	12	22	429.0	12.5	2	
E 250					569556	222.0	14	10	208.0	12.5	1	
E 251	081042					180.0	14	22	166.0	12.5	1	
E 252	320043					273.0	10	22	263.0	12.5	2	
254	514350					483.0	14	22	469.0	12.5	1	
255					583899	120.0	10	10	110.0	12.5	2	
256	584138					120.0	10	10	110.0	12.5	2	
257	527257					237.0	10	22	227.0	12.5	2	
D 258					628353	459.0	14	10	445.0	12.5	1	
D 259					702921	174.0	12	10	162.0	12.5	1	
D 260	703160					174.0	12	10	162.0	12.5	1	
D 261					745941	265.0	14	10	251.0	12.5	1	
D 262					746180	210.0	14	10	196.0	12.5	1	
D 263	419469					390.0	12	22	378.0	12.5	2	
C 264	459621					312.0	10	22	302.0	12.5	2	
C 265	464879					288.0	12	22	276.0	12.5	1	
C 266	690256					216.0	10	22	206.0	12.5	2	
C 267	853730					117.0	12	10	105.0	12.5	2	
B 268					856120	117.0	12	10	105.0	12.5	2	
B 269	291127					243.0	10	22	233.0	12.5	2	
B 270	293039					267.0	10	22	257.0	12.5	2	
B 271	559524					144.0	12	22	132.0	12.5	1	
B 272					560002	144.0	12	22	132.0	12.5	1	
B 273	234724					225.0	14	10	211.0	12.5	1	
B 274	616884					454.5	14	22	440.5	12.5	1	
A 275	552833					144.0	12	22	132.0	12.5	2	



Caution!
for twin-seal dim. D=10⁺²

- Ⓐ piston rod processing per STAB-Spec. 10006248
- Ⓒ before grinding: Hardness depth and hardness test acc. to STAB-Spec. 10258370
- Ⓓ tolerance $\pm 0,3$ after turning
- Ⓔ tolerance $\pm 0,3$ after straightening
- Ⓕ tolerance $\pm 0,3$ after nisliding
- Ⓖ threaded stud pre-turned dimension $\phi 8,97_{-0,06}$ thread roll tolerance 6e
- Ⓗ threaded stud pre-turned dimension $\phi 7,14_{-0,06}$ thread roll tolerance 6e

thread tolerances acc. to DIN ISO 965-3

sheet 7
of 11

Ident. Doc.: SN 8979B@erraldatum: 22/3/2023 - 10:26

DE: X	EN: X	ES:	IT:	PR:	FR:	RO: X	CAD created document handwritten changes not permitted				
new	surface treated ...	12,5	Nislide light	w/o surface	rom. version created	Ⓒ = acc. STAB-Spec. 10258370					
old	-	14,5	-	-	-	Ⓒ = RHT 0,4 ... 0,7 mm					
Field	E-F/1-3	Pos.176F	Tab.	7A-F	-	C 1-2	B-C/4				
Date/Name	29.05.2006 Schönberger	26.01.11 Hö	14.04.2011 Hö	27.04.2011 Höfer	20.04.2016 Jablonski	08.05.2019 Jablonski	27.04.2021 Hein				
Chg. No.	550631	586287	588157	588205	636361	678450	697639				
Rev.	15	16	17	18	19	20	21				

Material:	All dimensions are in mm	Marking of special characteristics according to STAB-Spec. 10270932	Date	Name
Material: 10006248 Material: 1010758	Scale: (Original DIN A3) 2:1	Dimensions without tolerances DIN ISO 2768 - mK	17.08.1993	Kirsch
Edge tolerances acc. to DIN ISO 13715 Surface finish acc. to DIN ISO 1302	We reserve all rights to this document, to any patents or patent registrations related hereto, and to the duplication, retransmission by third parties and misc. use. Any use of this document is not permitted without the written consent of STABILUS.		27.04.2021	Klinkner
Regulations:	STABILUS		Document No.: 10004582	
PISTON ROD			Material No.:	