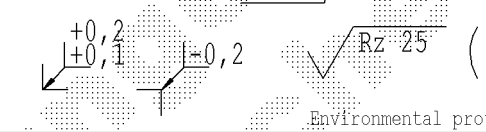
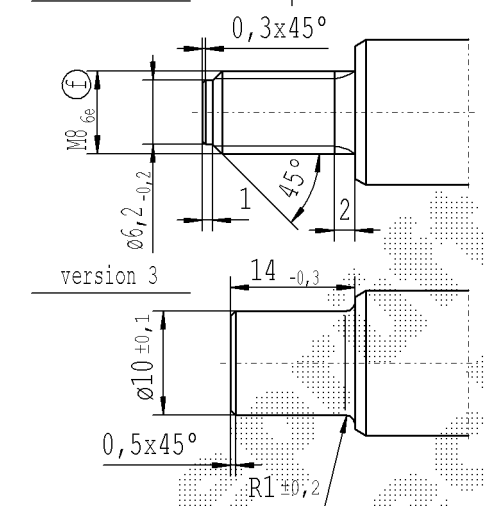
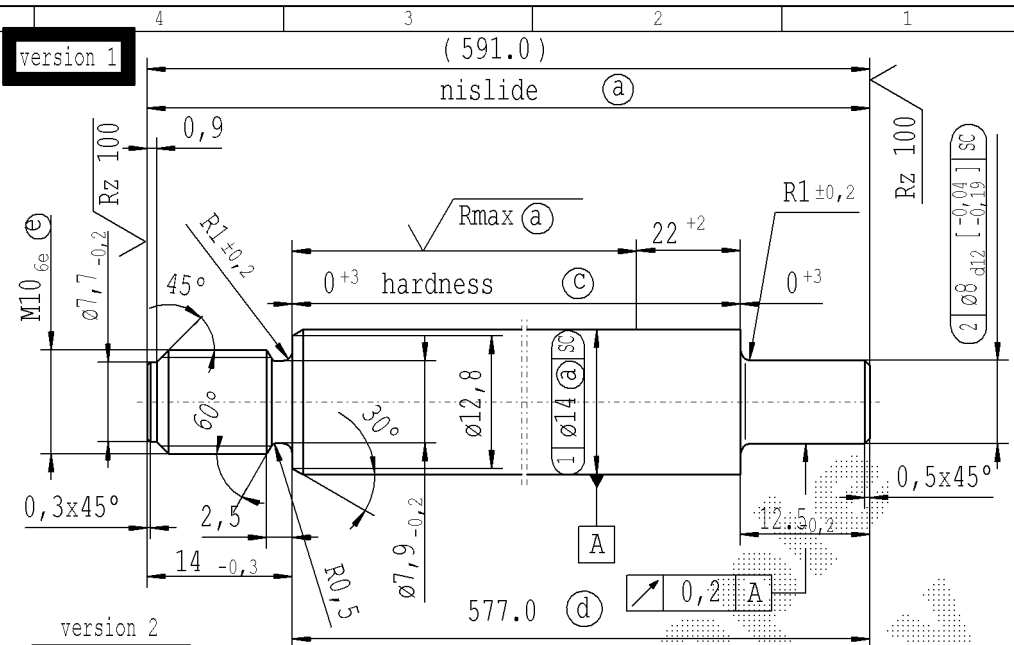


CONFIDENTIAL!  
Intended for internal use only

supp No.	material no.					A	B	D	E	F	G	version
	table IV Nislide black	table VIII Nislide black	table V Nislide light	table X Nislide "G"	without surface							
46	9146CV					408.0	14	22	394.0	12.5	1	
47	2574DK					411.0	14	22	397.0	12.5	1	
48	2662DT					363.0	14	10	349.0	12.5	1	
51	8267EY					213.0	12	22	201.0	12.5	2	
53	5527FU				513893	139.0	12	10	127.0	12.5	2	
55	5592FD					192.0	10	10	182.0	12.5	2	
56	5604FN					564.0	14	10	550.0	12.5	1	
57	5606FD					465.0	14	10	451.0	12.5	1	
60	6654FC					192.0	14	10	178.0	12.5	1	
61	9814FP					159.0	10	22	149.0	12.5	2	
63	2918GN					258.0	12	22	246.0	12.5	2	
65	5118GS					120.0	10	22	110.0	12.5	2	
68		1922LZ				165.0	12	22	153.0	12.5	2	
69	9281IS					459.0	10	22	449.0	12.5	2	
70	0601KV					267.0	14	22	253.0	12.5	3	
73	8246KR				249042	585.0	12	22	573.0	12.5	2	
75	7646KY				783924	456.0	14	10	442.0	12.5	1	
76	9416LJ					213.0	14	22	199.0	12.5	3	
77	0673MP					198.0	14	22	184.0	12.5	1	
78	1423MY					192.0	14	22	178.0	12.5	1	
79	1682MG					201.0	12	22	189.0	12.5	2	
82	5972MN					159.0	14	22	145.0	12.5	1	
83	7477MH				534168	591.0	14	22	577.0	12.5	1	
86	0014PW					650.0	14	22	636.0	12.5	1	
87	9691NS					288.0	14	22	274.0	12.5	1	
88	3885PD					222.0	14	22	208.0	12.5	3	
89	4527PP					210.0	14	22	196.0	12.5	1	
90	5911PP					210.0	12	22	198.0	12.5	2	
91	0993QU					231.0	10	22	221.0	12.5	2	
92	0008RA					249.0	14	22	235.0	12.5	1	



**Caution!**  
for twin-seal dim. D=10 +2

- Ⓐ piston rod processing per STAB-Spec. 10006248
- Ⓒ before grinding: Hardness depth and hardness test acc. to STAB-Spec. 10258370
- Ⓓ tolerance  $\pm 0,3$  after turning
- Ⓔ  $\pm 0,3$  after straightening
- Ⓕ  $\pm 0,3$  after nisliding
- Ⓖ threaded stud pre-turned dimension  $\varnothing 8,97_{-0,06}$  thread roll tolerance 6e
- Ⓗ threaded stud pre-turned dimension  $\varnothing 7,14_{-0,06}$  thread roll tolerance 6e

thread tolerances acc. to DIN ISO 965-3

sheet 2  
of 11

Environmental protection acc. to STAB-Spec. 10005649

DE: X	EN: X	ES: X	IT:	PR:	FR:	RO: X	CAD created document handwritten changes not permitted			
new	Nislide light	w/o surface	rom. version created	Ⓒ = acc. STAB-Spec. 10258370	$\varnothing 10 \pm 0,1$	$\varnothing 8_{d12} [-0,04]$	Span. version created			
old	-	-	-	Ⓒ = RHT 0,4 .... 0,7 mm	$\varnothing 10$	$\varnothing 8_{d12} [-0,04]$	-			
Field	Tab.	7A-F	-	c 1-2	B-C/4	-	-			
Date/Name	14.04.2011 H6	27.04.2011 H6fer	20.04.2016 Jablonski	08.05.2019 Jablonski	27.04.2021 Hein	16.10.2023 Jablonski	-			
Chg. No.	588157	588205	636361	678450	697639	727244	-			
Rev.	17	18	19	20	21	22	-			

Material: Material: 100010758	All dimensions are in mm	Marking of special characteristics according to STAB-Spec. 10270932	Date: 17.08.1993	Name: Kirsch
Edge tolerances acc. to DIN ISO 13715	Scale: (Original DIN A3) 2:1	Dimensions without tolerances DIN ISO 2768 - mK	Checked: 16.10.2023	Drawn by: Klinkner
Surface finish acc. to DIN EN ISO 1302	We reserve all rights to this document, to any patents or patent registrations related hereto, and to the duplication, retransmission by third parties and misc. use. Any use of this document is not permitted without the written consent of STABILUS.		Document No.: 10004582	
Registries:	<b>STABILUS</b>		Material No.:	
		<b>PISTON ROD</b>		